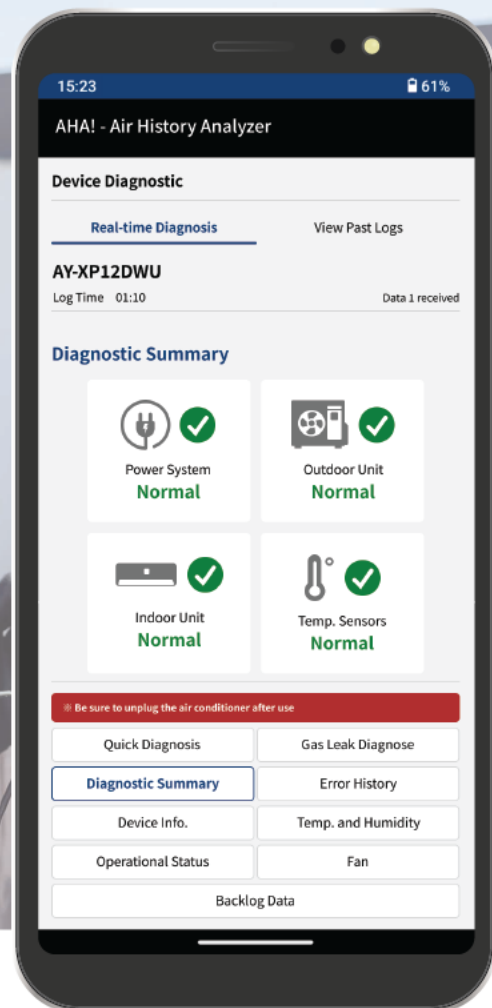


Service & Maintenance Support App

AHA! - Air History Analyzer



**AHA! - Air History Analyzer** is a maintenance tool designed to assist technicians in diagnosing errors and malfunction on Sharp-branded air conditioners.

## Easy Connect

Technician can easily connect the Heat Pump unit to the app via Bluetooth to start conducting an analysis on a troubled unit.  
And diagnosis can be fully conducted just by using a smartphone.

※ Android OS Smartphone is required





## AHA! - Air History Analyzer

(For Contractors)

**AHA! - Air History Analyzer** is a companion app designed to support heat pump technicians in servicing and maintaining Sharp branded heat pumps. Across North America, the HVAC industry faces a growing challenge with technician availability, as many regions report workforce shortages, delays in scheduling maintenance, and rising labor costs. The AHA app helps address these issues by providing a quick unit diagnostic check feature, enabling more time-efficient service and more consistent service quality. This leads to improved overall service quality, reduced downtime, and greater customer satisfaction.



### Analyse at a Glance

By presenting key metrics through clear graphs using previously saved data or real-time sensor readings, this feature helps technicians analyze the performance of critical components and supports efficient unit diagnostics. Metrics such as temperature sensors, fan operation, and compressor performance can all be viewed to assist with troubleshooting.

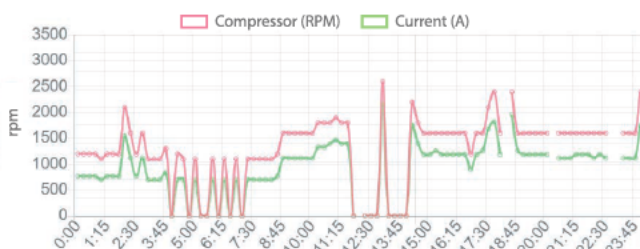


Figure 1: Compressor rpm and Power Current Level Graph

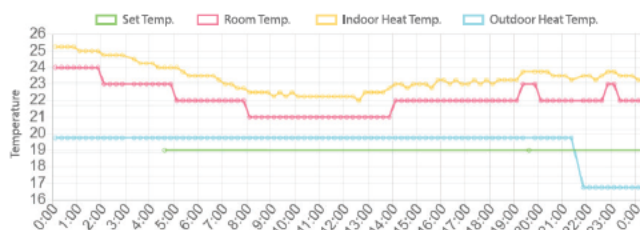


Figure 2: Room Temperature, Indoor & Outdoor Heat Exchanger Temperature Graph



### Real-Time Diagnosis

Technicians can access live data on essential components of both the indoor and outdoor units, including the power unit, fan, and compressor. This feature enables prompt assessment and quick identification of irregularities or potential issues.

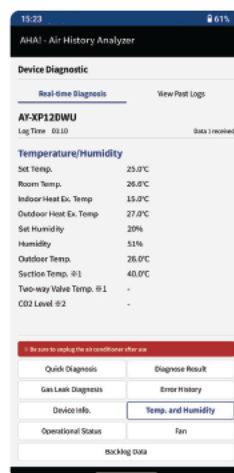


Figure 3 (Left): Temperature & humidity sensor info screen,

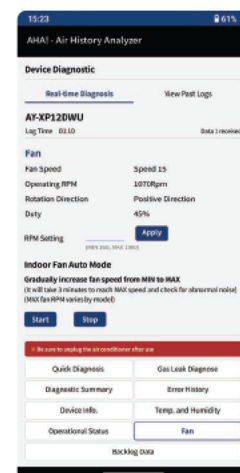


Figure 4 (Right): Fan info screen



### Backlog Data Access

The app also provides technicians with access to a backlog of previous data, which can be useful for comparing past cases and identifying patterns when diagnosing similar issues.

Other features including :



**Gas Leak Detection Tool**



**Firmware Update Tool**



**Troubleshooting Guide**



Introduction Video

For more information, please visit  
<https://global.sharp/products/hvac/>  
 or contact us at [minisplit@sharp.co.jp](mailto:minisplit@sharp.co.jp)