

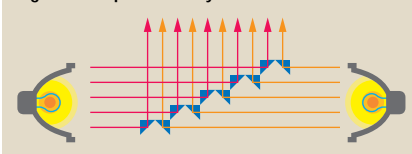
The XG-V10W Highly Equipped Large Venue Model Provides High Level Presentations with Superior Quality Images and Wide-Ranging Features

4700 ANSI Lumen High Bright Picture

Unique Dual Lamp System

With Sharp's unique optics, two high grade 200W UHP lamps provide ultra high brightness of 4700 ANSI Lumen with excellent colour uniformity.

Light Axis Separation & Synthesis Prism



Single/Dual Lamp Switchover

Choose the proper lamp arrangement to suit your needs. With dual lamp projection, the XG-V10W delivers high luminance pictures in a huge room. Even from a single lamp, the unit produces pictures of superb colour uniformity and sufficient brightness in mid-to-large-size rooms. Single lamp use also lessens lamp replacement frequency, reducing maintenance costs, and even if one lamp burns out, projection performance can be maintained by using the other lamp without interruption. Plus, for longer life and effective lamp use, every lamp is switched over each 100 hours.

High Brightness Picture



4700 ANSI Lumen Image with two lamps



2350 ANSI Lumen Image with one lamp

Maximum Output Light Prism

Sharp's unique technology of Light Axis Separation and Synthesis Prism works together with the dual lamp system to maximize light output, providing efficient brightness and excellent uniformity.

SXGA High-Precision Display

True SXGA Image Quality

Advanced Compatibility with High-End PCs, Workstations and DTV

Incorporating proprietary Sharp LSI technology, the XG-V10W works with powerful PCs and workstations used for specialised applications, such as medical, prepress DTP, CAD and CAM. The XG-V10W is also capable of displaying UXGA (1600 x 1200) resolution.

- Horizontal Frequency: 15-126 kHz
- Vertical Frequency: 43-200 Hz
- Pixel Clock: 12-230 MHz
- Compatible with Sync. on Green/Composite Sync. signals — Compatible with workstations (SUN, SGI, IBM, HP)
- UXGA (1600 x 1200) Compatible in Advanced Intelligent Compression (AICS)
- XGA, SVGA, VGA and Macintosh (19"/16"/13") compatible in Enhanced Up-Scaling
- HDTV/DTV Compatible: 480i/480P/720P/1080i

OCS (On Chip Spacer) LCD Panel

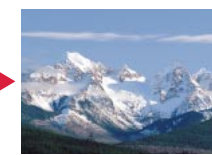
Screen uniformity problems are reduced by the OCS, the surfaces of two glass panels engineered flat and uniform.

3D Digital Uniformity

Three-Dimensional Digital Uniformity compensates uneven picture brightness even for pictures at any brightness level from white to dark.



Without OCS Panel and without 3D Digital Uniformity



With OCS Panel and with 3D Digital Uniformity

DTV/HDTV and DVD Compatible

The XG-V10W provides high-quality images from DVD, HDTV and DTV (480P, 720P, 1080i with 4:3 and 16:9 aspect ratios) by receiving 15k RGB signals and component signals (Y, PB, PR) through five BNC input terminals and an HD 15-pin mini D-sub terminal.



CV-IC Technology



CV-IC (Computers & Video Integrated Composer) Technology

New Progressive Mode

The Progressive Mode of the previous I/P Conversion still had jag lines and unclear pictures. The New Progressive Mode (3D Progressive) with correction circuitry compensates for this interference, to provide a natural and smooth picture for the progressive mode.

Still image viewed in progressive mode



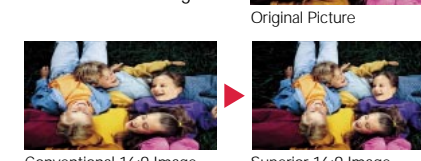
Previous I/P Conversion New Progressive Mode

Enhanced Digital Image Enlargement

When you need to compose a video wall or work with an enlarged picture, projecting the larger image sometimes results in unclear or jagged pictures. The Enhanced Digital Image Enlargement employs much more advanced smoothing technology, producing a crisp and even picture.

Superior 16:9 Image

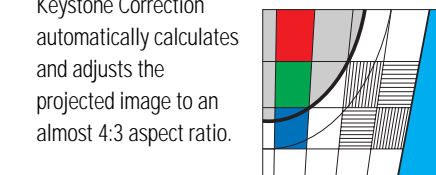
Conventional projectors extend a picture evenly from the 4:3 original to fit into a 16:9 screen, resulting in pictures stretched horizontally, i.e., wide and short. With the XG-V10W, pictures can be projected in a thinner ratio in the middle part and only extended on both sides, maintaining natural and proportional pictures sufficiently close to the 4:3 original.



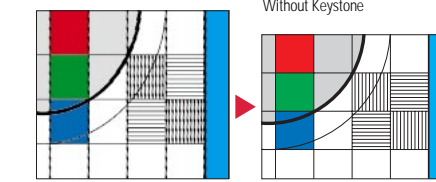
Conventional 16:9 Image Superior 16:9 Image

Intelligent Digital Keystone Correction (IDWS)

The Intelligent Digital Keystone Correction compensates picture distortion when images are projected at an angle, not only in the horizontal direction, the only method conventional systems provide, but also by vertical adjustment. Plus, jag lines on the picture are eliminated, providing a clear projection of almost the same quality as the original picture. And after adjustment of the angle with the Lens Shift Function, the XG-V10W with Keystone Correction automatically calculates and adjusts the projected image to an almost 4:3 aspect ratio.



Without Keystone



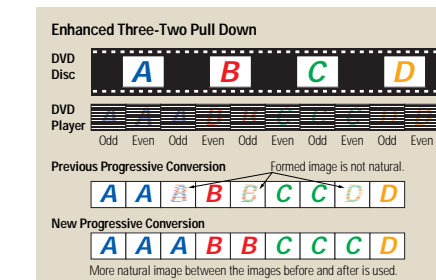
Previous Keystone (No vertical adjustment) Intelligent Keystone

New Intelligent Compression

New Intelligent Compression makes faint, fine lines and letters much clearer and sharper, suitable for project graphics, graph materials and PC menus.

Enhanced Three-Two Pull Down

Using the Film Mode, the XG-V10W can beautifully reproduce movie film recorded in 24Hz progressive format.



Multiple Input and Output Terminals

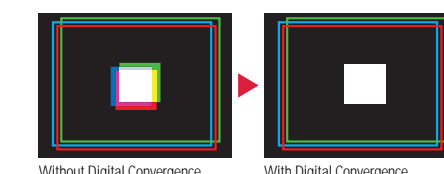
- 6 Inputs and 3 Outputs (including 1 Input and 1 Output Expansion Terminals)
- 1 BNC Terminal for RGB Signals/2 BNC Terminals for Component Signals/Video Signals
- PC Digital Input (DVI)
- Expansion Terminal for Optional Boards



Other Outstanding Features

Digital Convergence

With Digital Convergence, a slight distortion of convergence can be easily adjusted on the service menu screen without having to touch the LCD panel.

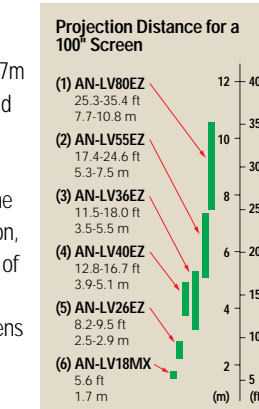


Without Digital Convergence With Digital Convergence

Six Interchangeable Lenses with Lens Shift Function

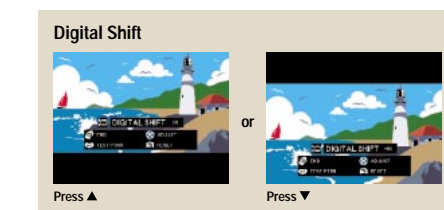
The projector may be used with six optional interchangeable lenses to meet an amazingly wide variety of applications and projection situations. Choose the one which best suits your projection conditions such as the room size, projection distance and projected picture size.

The XG-V10W covers projection distances from 1.7m to up to 10.8m and finely adjusts the images in angle projection with the Lens Shift Function, though the range of lens shift angle depends on the lens type.



Digital Shift Function

A picture ratio of 16:9 in movie videos or DVDs may result in an awkward black line at the top or bottom of the screen. With the Digital Shift function, providing almost the same performance as the Lens Shift function, the entire picture is vertically adjusted, centering the image and ensuring more evenly balanced viewing.



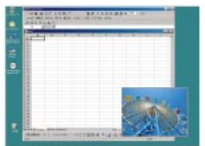
Advanced Presentation Features

■ Built-In Presentation Tools

The XG-V10W provides a variety of useful presentation support tools to highlight important points and deliver a stronger message.

■ Picture-In-Picture

The XG-V10W can add video images onto a data screen image, providing you with even more effective presentations.



■ Digital Enlarge

■ Freeze

■ Customizable Startup Screen & Background Screen

Low Fan Noise: 39 dB (in dual lamp mode)

In spite of the XG-V10W's super high brightness, the projector is astonishingly quiet. The unit produces less fan noise, eliminating annoying sounds during presentations and meetings.

■ Long Life 3-Micron Filter

Dust-free and highly durable in design, the newly developed, long life 3-micron filter is employed to greatly extend filter life. It extends the conventional 100 hours to an amazing 2000 hours under normal conditions in regular conference rooms.

■ Auto Response Adjust (ARA)

Automatically and quickly synchronises in 4 to 8 seconds the projection settings (pixel clock, phase and horizontal and vertical positions) for a smooth start to presentations.

■ GUI (Graphical User Interface): Navitron

The easy-to-use Navitron GUI shows how to adjust the focus, sound, lighting, and other settings.

■ High Quality Video Circuits (3D Y/C Separation, 3-Line Digital Comb Filter, 3D Noise Reduction, Colour Transient and Y Delay)

■ Multi System Video Compatibility (NTSC/NTSC4.43/PAL/PAL[60Hz]/PAL-M/PAL-N/SECAM)

■ 11-Language On-Screen Display (English, German, Spanish, Dutch, French, Italian, Swedish, Portuguese, Chinese, Korean, Japanese)

■ USB-PS/2 Wireless Remote Control with Mouse Control, Laser Pointer and Backlit Function

■ Colour Temperature Adjustment

■ Key Lock Function

■ 4 Power Save Mode when on standby