

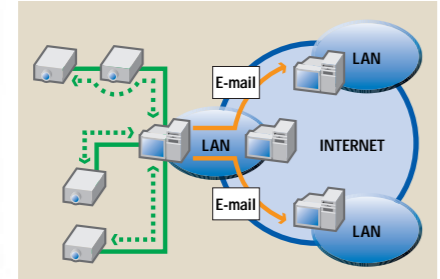
Convenient Control via Networking

Network Connectivity and Remote Access

The XG-V10W/X can be used in a network of up to 250 projectors managed from a single PC with the accompanying Sharp Advanced Presentation Software Professional Edition*, and connected to a PC with an RS-232C, RS-422 or LAN connection. Output terminals enable a daisy chain configuration and eliminate the need for a distributor. The XG-V10W/X can also be managed over a network via an Ethernet connection. The model has an ID No. indicator to set the ID number on each connected unit.

Self-Diagnosis

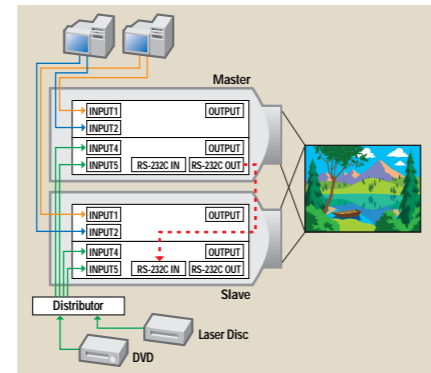
The XG-V10W/X projector includes a self-diagnosis function to constantly check its condition. When trouble occurs, for example, a lamp burns out, the projector sends an error message to the management PC installed with Sharp Advanced Presentation Software Professional Edition, which then automatically relays the projector's message to a registered e-mail address. The software also enables setting the PC to regularly check each projector's condition and sending their reports by email, as well as keeping a record of those reports.



Simple Stacking and Video Wall Stack Projection

For brighter images, two XG-V10W/X projectors, for example, can be stacked in a master/slave configuration, providing 9400 ANSI Lumen (4700 x 2) brightness for the XG-V10W and 8000 ANSI Lumen (4000 x 2)* brightness for the XG-V10X. The Slave is controlled by the Master during projection through an RS-232C connection. A separately-sold RS-232C cable is connected from the RS-232C output on the Master to the RS-232C input on the Slave. Adjusting the settings of each projector is individually controlled, and support functions such as Enlarge, Freeze and Presentation Tools are controlled by the two projectors together at the same time, just as when controlling only one projector.

(* When using optional standard zoom lens AN-LV40EZ)

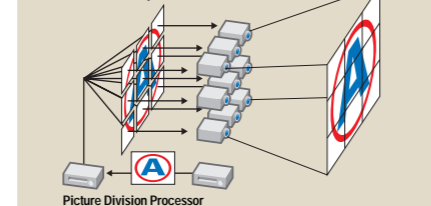


Video Wall

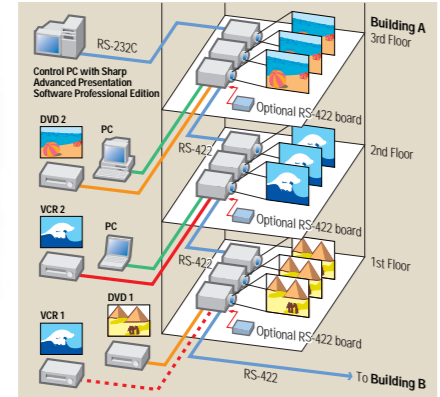
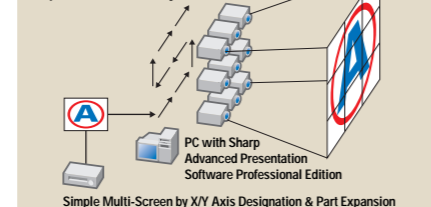
With the accompanying Sharp Advanced Presentation Software Professional Edition, the XG-V10W/X can link with other XG-V10W/X projectors to create a videowall projection, eliminating the need for an image distributor, and allowing easy image settings from a PC when using a single video source. RS-232C outputs enable a master projector linked directly to the PC to form a simple daisy chain connection to multiple slave projectors. The video wall can be set up from 2 x 2 projectors to 8 x 8 projectors.



Traditional & Complicated



Sophisticated but Easy



* Sharp Advanced Presentation Software Professional Edition can be downloaded from the Sharp Global Home Page (<http://www.sharp-world.com/projector/>) for free.

Optional Accessories

Lenses	Boards	Cables	Ceiling Mounts
AN-LV18MX (Fixed wide lens)	AN-S422 (RS-422 board)	AN-C3DV (DVI cable) (3 m)	AN-TK201 (For high ceiling installation)
AN-LV26EZ (Wide-zoom lens)		AN-C3CP (3-RCA to 15-pin D-sub cable) (3 m)	AN-TK202 (For standard ceiling installation)
AN-LV40EZ (Standard zoom lens)	AN-SD1 (Projector SDI board)	AN-C3BN (5-BNC to 15-pin D-sub cable) (3 m)	Installation Adaptor AN-SV1T
AN-LV36EZ (Super zoom lens)		AN-C10RS (RS-232C serial control cable) (10 m)	
AN-LV55EZ (Mid-range zoom lens)	AN-L10T (10 BASE-T board)		
AN-LV80EZ (Tele-zoom lens)			
AN-LV140X (Fixed tele lens)			

* Check other accessories with your local dealers.

Specifications

Model	XG-V10W	XG-V10X
LCD panels	Poly Silicon 1.8" (4.6 cm) active matrix TFT LCD x 3	
Number of pixels	3,932,160 pixels (1,310,720 dots x 3, in stripe pixel arrangement)	2,359,296 pixels (786,432 dots x 3, in stripe pixel arrangement)
Resolution	620 TV lines (video input), 720 TV lines (DTV 720P input, Dot by Dot), 1280 dots x 1024 lines (computer data)	620 TV lines (video input), 650 TV lines (DTV 720P input, Dot by Dot), 1024 dots x 768 lines (computer data)
Computer RGB input signals	LUXGA (in advanced intelligent compression), SXGA, XGA, SVGA, VGA, VESA, Mac 21"/19"/16"/13" 15-126 kHz (horizontal), 43-200 Hz (vertical), 12-230 MHz (pixel clock) (plug & play VESA: DDC 1/2B)	UXGA, SXGA, Mac 21" (in advanced intelligent compression), XGA, SVGA, VGA, VESA, Mac 19"/16"/13" 15-126 kHz (horizontal), 43-200 Hz (vertical), 12-230 MHz (pixel clock) (plug & play VESA: DDC 1/2B)
Video colour systems	NTSC/NTSC 4.43/PAL/PAL (60Hz)/PAL-M/PAL-N/SECAM/DTV (480i/480P/720P/1080i)	
Lens	Choice of seven lenses (Sold separately)	
Projection size	40" (102 cm) to 600" (15.2 m) diagonal	
Projection distance	40" (102 cm) : 1.5 m-2.0 m, 100" (254 cm) : 3.9 m-5.1 m, 600" (15.2 m) : 24.0 m -31.2 m (with standard lens AN-LV40EZ)	
Luminance	4700 ANSI Lumen	4000 ANSI Lumen
Contrast ratio	400:1	
Audio amplifier	3W x 2 (stereo)	
Speakers	5 x 8 cm (round) (x 2)	
Input terminals	Video x 2 (BNC), S-video x 2(BNC), component x 2 (BNC), audio L/R stereo x 2 (RCA), computer RGB x 2 (15-pin mini D-sub x 1, 5BNC x 1), audio L/R stereo x 2 (RCA)	
Output terminals	29-pin analogue-micro cross/digital (DVI) x 1, audio L/R stereo x 1 (RCA), expansion terminal x 1, wired remote control x 1 (3.5 mm mini jack), RS-232C serial port x 1 (9-pin D-sub)	
Power source	110-120/220-240V AC, 50/60Hz (Multi-Voltage)	
Power consumption	575W (0.2W standby power with XG-V10W/U/XU, 0.7W standby power with XG-V10WE/XE)	
Power dissipation	< 2100 BTU/hour	
Projection lamp	200W UHP (x 2)	
Dimensions (W x H x D)	444 x 196 x 621 mm (main body only)	
Weight	448 x 222 x 643 mm (including adjuster legs and projecting parts)	
Supplied accessories	18.9 kg (without lens), 23.1 kg (with standard lens AN-LV40EZ)	
	Remote control, AA size battery (x 2), power cord (1.8m), computer cable (3m), remote mouse receiver and cable for IBM/Mac USB (1m) and IBM PS/2 (1m), extra air filter, terminal cover, CD-ROM, operation manuals	

Design and specifications are current as of March 2001, but are subject to change without prior notice.

SHARP
SHARP CORPORATION OSAKA, JAPAN
URL: <http://www.sharp-world.com/>

SHARP

XG-V10W/X Conference Series

Great Large Venue Presentations from Sharp's High Grade Projectors



TRUE SXGA/XGA NETWORK CAPABLE LARGE VENUE LCD PROJECTORS