

# The XG-V10W/X Highly Equipped Large Venue Models Provide High Level Presentations with Superior Quality Images and Wide-Ranging Features

## High Brightness Picture

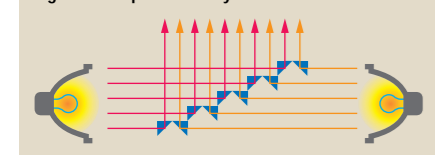
**4700 (XG-V10W)/4000 (XG-V10X) ANSI Lumen High Bright Picture**

### Unique Dual Lamp System

With Sharp's unique optics, two high-grade 200W UHP lamps provide ultra high brightness of 4700 (XG-V10W)/4000 (XG-V10X)\* ANSI Lumen with excellent colour uniformity.

(\* When using optional standard zoom lens AN-LV40EZ)

### Light Axis Separation & Synthesis Prism



4700 ANSI lumen image with two lamps (XG-V10W)



2350 ANSI lumen image with one lamp (XG-V10W)

### Single/Dual Lamp Switchover

Choose the lamp arrangement to suit your needs. With dual lamp projection, the XG-V10W/X delivers high luminance pictures in a huge room. Even from a single lamp, the unit produces pictures of superb colour uniformity and sufficient brightness in mid-to-large-size rooms. Single-lamp use also lessens lamp replacement frequency, reducing maintenance costs. Even if one lamp burns out, projection performance can be maintained by using the other lamp without interruption. Plus, for longer life and effective lamp use, the lamp can be switched over automatically each 100 hours.

### Maximum Output Light Prism

Sharp's unique technology of Light Axis Separation and Synthesis Prism working together with the dual lamp system to maximize light output, provides efficient brightness and excellent uniformity.

## SXGA High-Precision Display

### True SXGA/XGA Image Quality

### Advanced Compatibility with High-End PCs, Workstations and DTV

Incorporating proprietary Sharp LSI technology, the XG-V10W/X works with powerful PCs and workstations used for specialised applications, such as medical, prepress DTP, CAD and CAM.

- Horizontal Frequency: 15-126 kHz
- Vertical Frequency: 43-200 Hz
- Pixel Clock: 12-230 MHz
- Compatible with Sync. on Green/Composite Sync. signals — Compatible with workstations (SUN, SGI, IBM, HP)
- HDTV/DTV Compatible: 480i/480P/720P/1080i

### XG-V10W:

- UXGA (1,600 x 1,200) Compatible in Advanced Intelligent Compression (AICS)
- True SXGA (1,280 x 1,024) and Macintosh 21" (1,280 x 1,024) Compatible
- XGA, SVGA, VGA and Macintosh (19"/16"/13") Compatible in Enhanced Up-Scaling

### XG-V10X:

- UXGA (1,600 x 1,200), SXGA (1,280 x 1,024) and Macintosh 21" (1,280 x 1,024) Compatible in Advanced Intelligent Compression (AICS)
- True XGA (1,024 x 768), SVGA, VGA and Macintosh (19"/16"/13") Compatible

### Advanced Intelligent Compression (AICS)

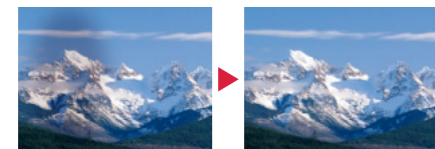
Higher resolution pictures can be compressed while keeping high quality to fit into the panel resolution.

### Enhanced Up-Scaling

Lower picture resolutions can be up-scaled to the high image quality of projector panels.

### 3D Digital Uniformity

Three-Dimensional Digital Uniformity compensates uneven picture brightness at all picture brightness levels from white to dark.



Without OCS Panel and without 3D Digital Uniformity (Left) / With OCS Panel and with 3D Digital Uniformity (Right)

### DTV/HDTV and DVD Compatible

The XG-V10W/X provides high-quality images from DVD, HDTV and DTV (480P, 720P, 1080i with 4:3 and 16:9 aspect ratios) by receiving 15k RGB signals and component signals (Y, PB, PR) through five BNC input terminals and an HD 15-pin mini D-sub terminal.



The optional standard zoom lens is attached to the XG-V10W in this photo.

## CV-IC Technology

### CV-IC (Computers & Video Integrated Composer) Technology

#### 10-bit Digital Gamma Correction Circuitry

10-bit Digital Gamma Correction Circuitry precisely compensates for picture quality and 4-mode gamma selection modulates the gamma value, matching the picture reproduction with the format source and entertainment type, providing brighter pictures and accurately reproducing subtle colour changes.

#### New Progressive Mode

The Progressive Mode of the previous I/P Conversion still had jagged lines and unclear images. The New Progressive Mode (3D Progressive) with correction circuitry compensates for this interference, to provide a natural and smooth picture in the progressive mode.

#### Still image viewed in progressive mode



Previous I/P Conversion (Left) / New Progressive Mode (Right)

#### Enhanced Digital Image Enlargement

When you need to compose a video wall or work with an enlarged picture, projecting the larger image sometimes results in unclear or jagged pictures. The Enhanced Digital Image Enlargement employs a much more advanced smoothing technology, producing a crisp and even picture.

#### Superior 16:9 Image

Conventional projectors extend a picture evenly from the 4:3 original to fit into a 16:9 screen, resulting in pictures stretched horizontally, i.e., wide and short. With the XG-V10W/X, pictures can be projected in a thinner ratio in the middle part and only extended at the sides. This maintains natural and proportional pictures close to the 4:3 original.



Original Picture (Left) / Superior 16:9 Image (Right)



Conventional 16:9 Image



Without Keystone (Left) / Intelligent Keystone (Right)

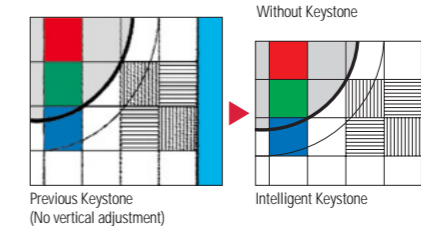
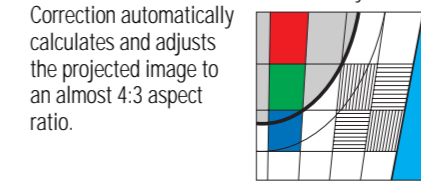
#### Dynamic Gamma Correction

Dynamic Gamma Correction optimizes gamma correction frame by frame in real time, thus providing a more beautiful image.

#### Intelligent Digital Keystone Correction (IDWS)

The Intelligent Digital Keystone Correction compensates for picture distortion when images are projected from an angle. Conventionally, only horizontal adjustment can be made. With this new method, the IDWS system provides vertical adjustment. Jagged lines on the picture are eliminated, providing a clear projection of almost the same quality as the original picture. After

adjusting the angle of projection with the Lens Shift function, the XG-V10W/X with Keystone Correction automatically calculates and adjusts the projected image to an almost 4:3 aspect ratio.

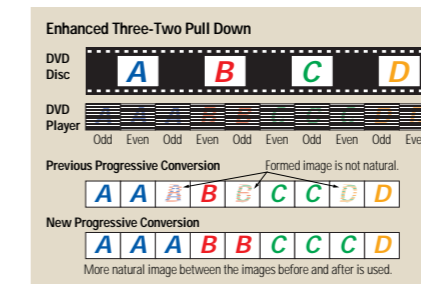


#### New Intelligent Compression

New Intelligent Compression makes faint, fine lines and letters much clearer and sharper, suitable for project graphics, graph materials and PC menus, with almost perfect legibility.

#### Enhanced Three-Two Pull Down

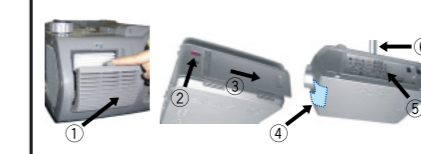
Using the Film Mode, the XG-V10W/X can beautifully reproduce movie film recorded in 24Hz progressive format.



#### Easy Maintenance for Ceiling Mounting

The XG-V10W/X is designed to make installation and maintenance a breeze — no more worrying about troublesome removal from the ceiling mount:

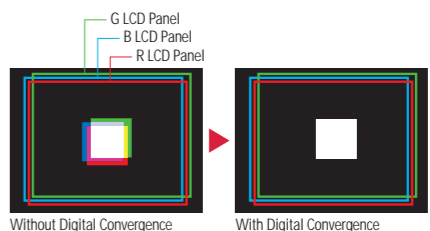
- (1) The air filter is replaced in a single touch.
- (2) The LED ID No. lamp, mounted on the back of the unit, is large enough to be read from a distance.
- (3) Just slide the back cover to replace the lamps — no need to remove from the ceiling mount.
- (4) Even for exchanging the lenses, simply remove the lens cover with a special screw driver supplied as a standard accessory.
- (5) All input/output terminals are mounted on the side of the projector.
- (6) The mounting bracket is the same as the one used for the XG-E3500/XG-XV2, eliminating compatibility hassles.



### Other Outstanding Features

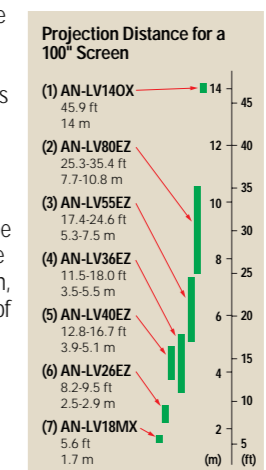
#### Digital Convergence

With Digital Convergence, a slight distortion of convergence can be easily adjusted on the service menu screen without having to dismantle the projector and to move the LCD panel.



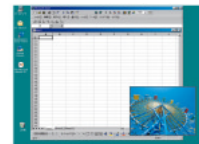
#### Seven Interchangeable Lenses with Lens Shift Function

The projector may be used with seven optional interchangeable lenses to meet an amazingly wide variety of applications and projection situations. Choose the one which best suits your projection conditions such as the room size,



#### Picture-In-Picture

The XG-V10W/X can add video images onto a data screen image, providing you with even more effective presentations.



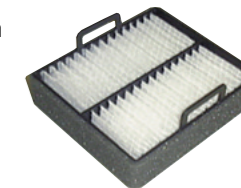
- Digital Enlarge (x 1, x 4, x 9, x 16, x 36, x64)
- Freeze
- Customizable Startup Screen & Background Screen

#### Low Fan Noise: 39 dB (in dual lamp mode)

In spite of the XG-V10W/X's super high brightness, the projector is astonishingly quiet. The unit produces less fan noise, eliminating annoying sounds during presentations and meetings.

#### Long-Life Filter

Dust-free and highly durable in design, the newly developed, long life filter is employed to greatly extend filter life as well as filter out dust and dirt of only 3 microns. It extends the conventional 100-hour cleaning function to an amazing 2000 hours. These figures are based on normal operation in regular conference rooms.



#### Auto Response Adjust (ARA)

Automatically and quickly synchronises in 4 to 8 seconds the projection settings, pixel clock, phase and horizontal and vertical positioning. This ensures a quick and smooth start to presentations.

- GUI (Graphical User Interface): Navitron
- The easy-to-use Navitron GUI shows how to adjust the focus, sound, lighting, and other settings.

- High-Quality Video Circuits (3D Y/C Separation, 3-Line Digital Comb Filter, 3D Noise Reduction, Colour Transient and Y Delay)

- Multi System Video Compatibility (NTSC/NTSC4.43/PAL/PAL [60Hz.]/PAL-M/PAL-N/SECAM)

- 11-Language On-Screen Display (English, German, Spanish, Dutch, French, Italian, Swedish, Portuguese, Chinese, Korean, Japanese)

- USB-PS/2 Wireless Remote Control with Mouse Control, Laser Pointer and Backlit Function

- Colour Temperature Adjustment
- Key Lock Function & Password Function
- Power Save Mode when on Standby

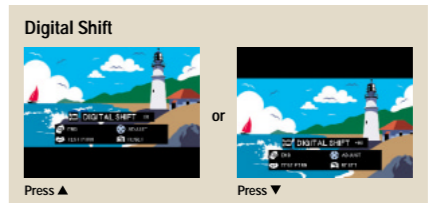
### Multiple Input and Output Terminals

- 6 Inputs and 3 Outputs (including 1 Input and 1 Output Expansion Terminals)
- 1 BNC Terminal for RGB Signals/2 BNC Terminals for Component Signals/Video Signals
- PC Digital Input (DVI)
- Expansion Terminal for Optional Boards



#### Digital Shift Function

The presetting of a video or DVD movie to the 16:9 screen ratio may result in a black line at the top or the bottom of the screen. With the Digital Shift function, the entire picture can be moved vertically on the screen in a similar way as the Lens Shift.



#### Advanced Presentation Features

- Built-In Presentation Tools
- The XG-V10W/X provides a variety of useful presentation support tools to highlight important points and deliver a stronger message.