

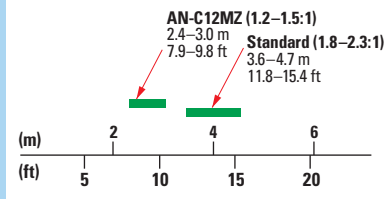
Optional Accessories

Lenses



AN-C12MZ
(Wide-zoom lens)

Projection Distances for a Normal (4:3) 100" Screen (throw ratio)



Cables



AN-C3CP
3-RCA to 15-pin D-sub cable (3 m)



AN-C3BN
5-BNC to 15-pin D-sub cable (3 m)



AN-C10BM
RGB cable IBM VGA series (10 m)

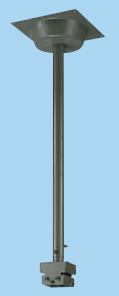


AN-C10MC
RGB cable Macintosh II series (10 m)



AN-C10RS
RS-232C serial control cable (10 m)

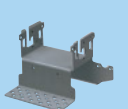
Ceiling Mounts



AN-TK201
For high ceiling installation



AN-TK202
For standard ceiling installation



AN-60KT
Installation adaptor

Specifications

Model	XG-C50X
LCD panels	Poly Silicon 0.99" (2.54 cm) active matrix TFT LCD x 3
Number of pixels	1,024 x 768 pixels
Resolution	550 TV lines (composite input), 750 TV lines (DTV 720P input)
Video/data systems	RGB input signals: UXGA/SXGA+/SXGA/Mac 21" (in advanced intelligent compression), XGA, SVGA, VGA, PC-98, VESA, Mac 19"/16"/13", 15-126 kHz (horizontal), 43-200 Hz* (vertical), 12-230 MHz (pixel clock) (plug & play VESA; DDC 1/2B) Video colour systems: NTSC/NTSC 4.43/PAL/PAL (60 Hz)/PAL-M/PAL-N/SECAM/DTV (480I/480P/540P/580I/580P/720P/1035I/1080I-50 Hz/60 Hz)
Lens	1:1.27 manual zoom and focus
Projection size	40" (102 cm) to 300" (762 cm) diagonal
Projection distance	40" (102 cm): 1.4-1.8 m, 100" (254 cm): 3.6-4.7 m, 300" (762 cm): 11-14.1 m
Luminance	3,000 ANSI lumen (Standard Mode)/2400 ANSI lumen (Low Power Mode)
Contrast ratio	400:1
Audio amplifier	3 W
Speakers	3 cm (round) x 1
Input terminals	Video x 1 (RCA), S-video x 1, audio L/R mono mixing x 1 (RCA), computer RGB/component x 2 (15-pin mini D-sub), audio L/R x 1 (3.5 mm stereo mini jack), RS-232C serial port x 1 (9-pin D-sub), wired remote control x 1 (3.5 mm mini jack), USB x 1
Output terminals	Computer RGB/component x 1 (15-pin mini D-sub), audio L/R x 1 (3.5 mm stereo mini jack)
Power source	100-240 V AC, 50/60 Hz (Multi-Voltage)
Power consumption	340 W (Standard Mode)/290 W (Low Power Mode)/0.8 W (Standby)
Fan noise	36 dB (Standard Mode)/33 dB (Low Power Mode)
Projection lamp	250 W UHP lamp
Lamp life	1,500 hours (Standard Mode)/2,000 hours (Low Power Mode)
Dimensions (W x H x D)	390 x 99 x 294 mm (main body only) 393 x 114 x 303.2 mm (including adjuster legs and projecting parts)
Weight	5.1 kg (11.3 lbs)

* Temporary noise may be visible with vertical frequencies above 100 Hz if OSD functions are activated. Design and specifications are current as of September 2002, but are subject to change without notice.

Low in Profile,
Extraordinary in Performance.

The XG-C50X Creates the New Standard for Compact Projectors

