

SHARP GH0406AA2G Multi-mode UV Laser Diode



↶ To the Wavelength
↶ To the Package

$\phi 5.6\text{mm}$ TO-CAN Package

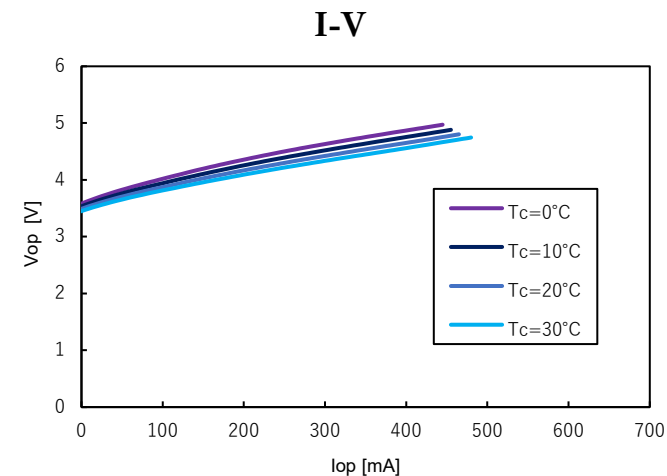
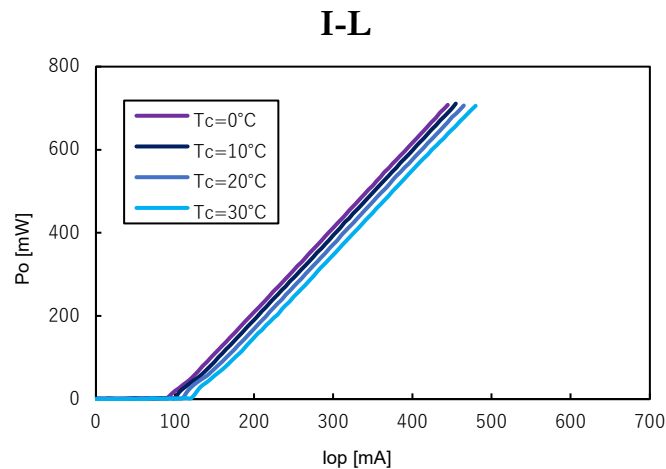
March 2022

■ Characteristics

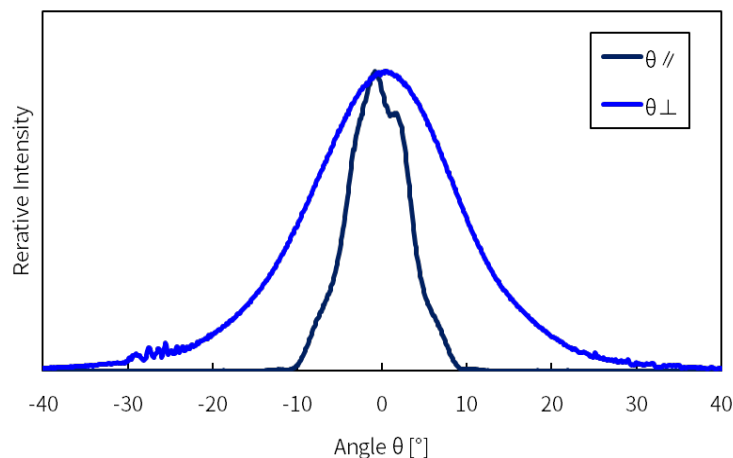
($T_c=25^\circ\text{C}$, CW)

Item	Conditions	Characteristic value (TYP.)
Wavelength (Peak)	$P_o=600\text{mW}$	405nm
Output(mW) [Max]	—	600mW [700mW]
Threshold current	—	120mA
Operating current	$P_o=600\text{mW}$	420mA
Operating voltage	$P_o=600\text{mW}$	4.4V
Far Field ($1/e^2$ ($^\circ$))	$P_o=600\text{mW}$	$\theta_{//} 16, \theta_{\perp} 38$
Terminal connections	No.9	$\phi 5.6$

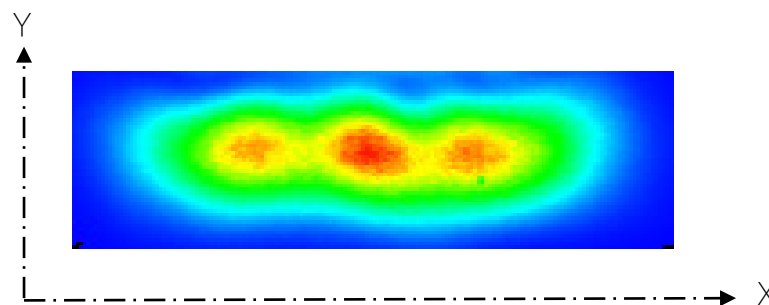
■ CW I-L, I-V Temperature



■ Far Field Pattern



■ Near Field Pattern



Emitter size

	FWHM(μm)	$1/e$ (μm)	$1/e^2$ (μm)
X	7.7	8.4	10.4
Y	1.8	2.2	3.3

