

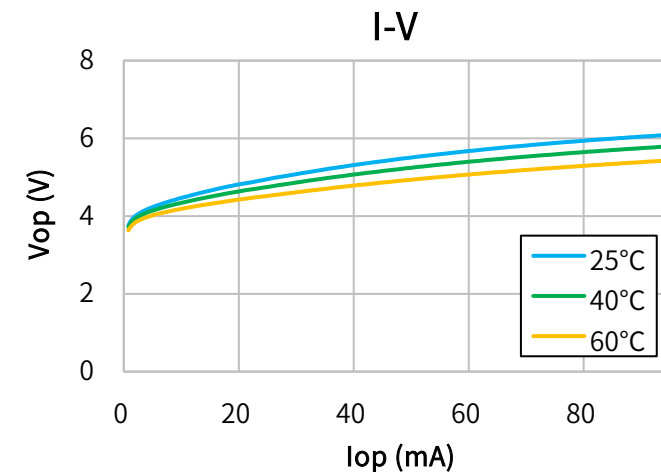
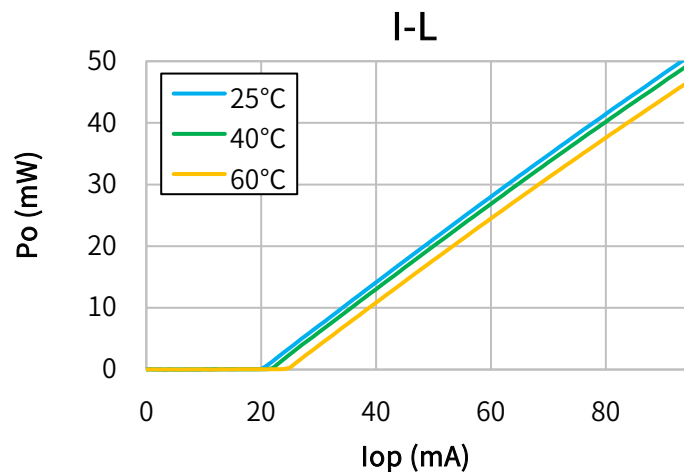


Characteristics

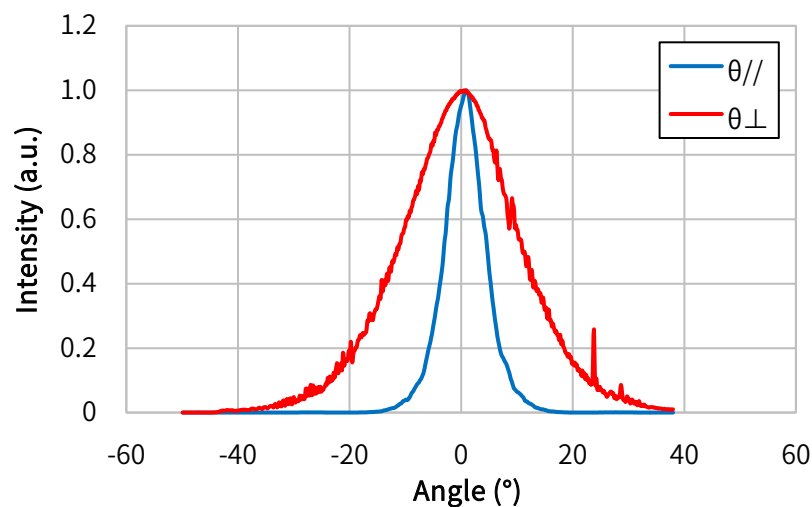
(T_c=25°C, CW)

Item	Conditions	Characteristic value (TYP.)
Wavelength (Peak)	P _o =50mW	487nm
Output [Max]	—	50mW[55mW]
Threshold current	—	40mA
Operating current	P _o =50mW	105mA
Operating voltage	P _o =50mW	6.0V
Far Field (FWHM)	P _o =50mW	θ// 8°, θ⊥ 23°
Terminal connections	No.8	
Package type	φ5.6	

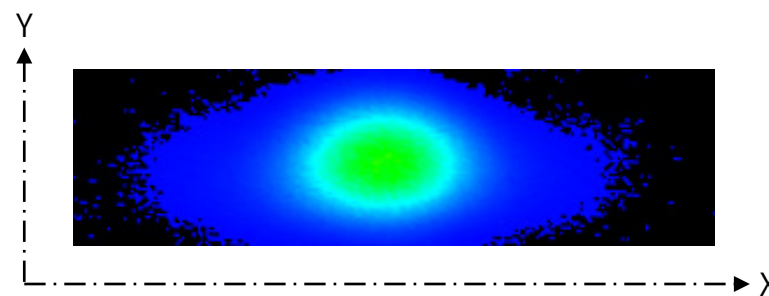
CW I-L, I-V Temperature



Far Field Pattern



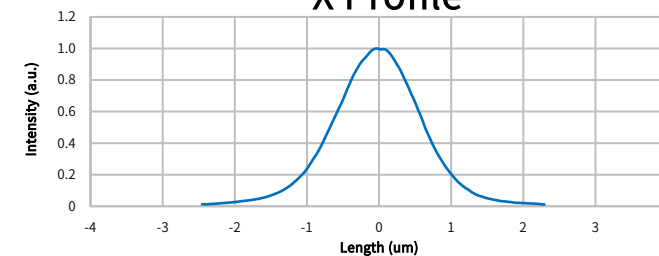
Near Field Pattern



Emitter size

	FWHM (μm)	1/e (μm)	1/e ² (μm)
X	1.3	1.6	2.4
Y	0.8	1.0	1.4

X Profile



Y Profile

