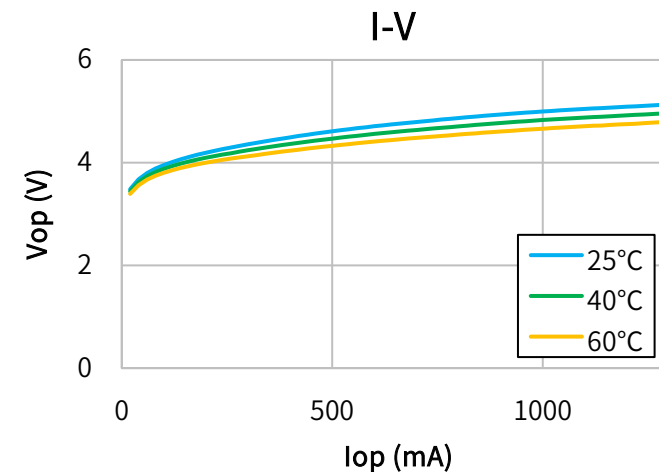
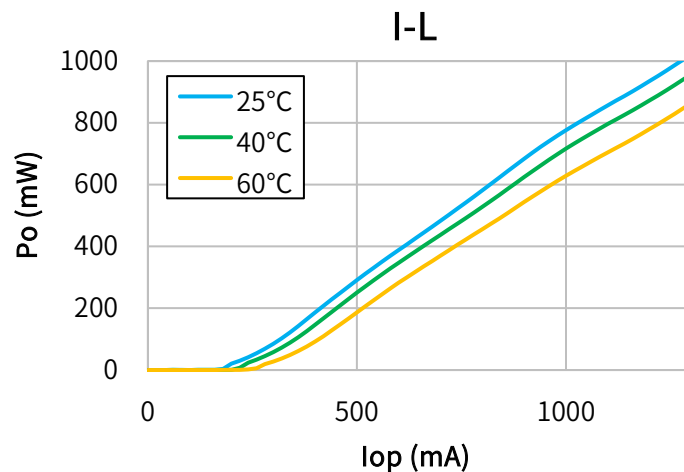


Characteristics

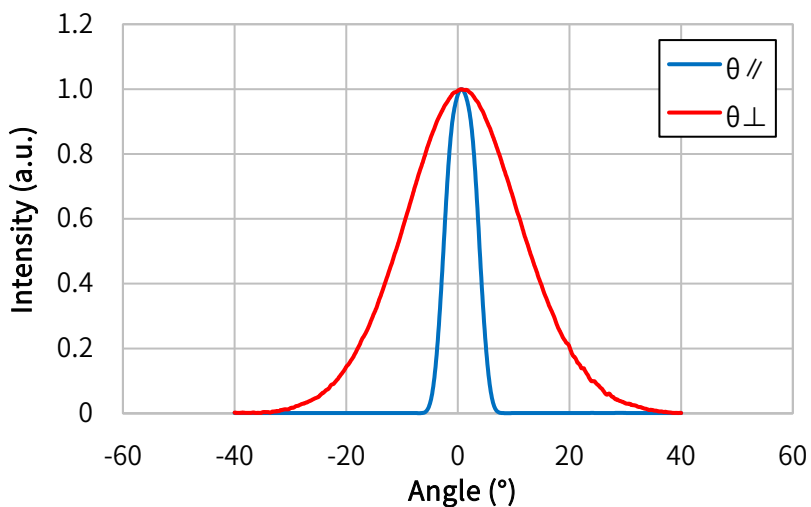
(Tc=25°C, CW)

Item	Conditions	Characteristic value (TYP.)
Wavelength (Peak)	Po=1000mW	520nm
Output	—	1000mW
Threshold current	—	210mA
Operating current	Po=1000mW	1400mA
Operating voltage	Po=1000mW	5.2V
Far Field (1/e ²)	Po=1000mW	θ// 8°, θ⊥ 41°
Terminal connections	No.9	
Package type	φ9.0	

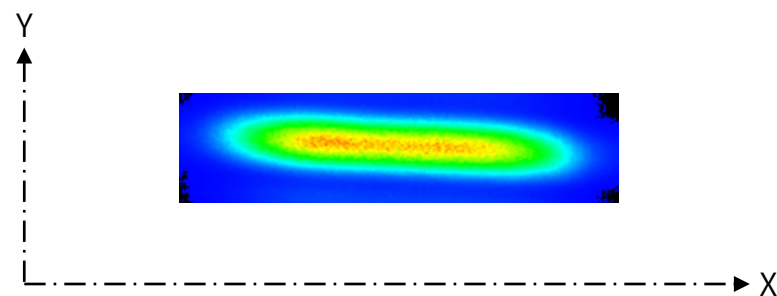
CW I-L, I-V Temperature



Far Field Pattern



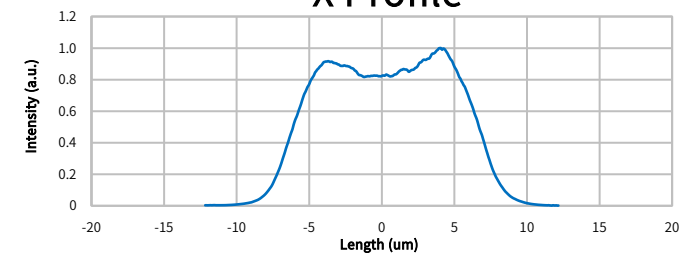
Near Field Pattern



Emitter size

	FWHM (μm)	1/e (μm)	1/e ² (μm)
X	12.8	13.7	15.7
Y	1.5	1.8	2.5

X Profile



Y Profile

