

SHARP

AQUOS



Sharp LCD TV Lineup for Asia

AQUOS — The apex of flat-panel TVs



LC-52A83M

There's more to see.

Remember the first time you saw TV? It was awesome. Awe-inspiring.

Your eyes bulged with curiosity as you watched every colourful, soulful, funny, provocative and bizarre image that crossed the screen.

It moved you. Made you think. Helped you understand. You saw television, and right there and then you connected with the world.

You were hooked. You needed to see more. Oh, and there's more to see, all right.

At Sharp, we believe that there is always more to see in the world, and that wide-eyed wonderment should come every time you turn on the television, not just the first time. This is the philosophy and ethos that's built into every AQUOS Liquid Crystal television we make.

By enhancing your experience with colour, detail, and sound on an AQUOS, you are opening yourself up to an enhanced understanding of the world around you. More clarity. More feelings. More information. More laughter. More everything. Look around.

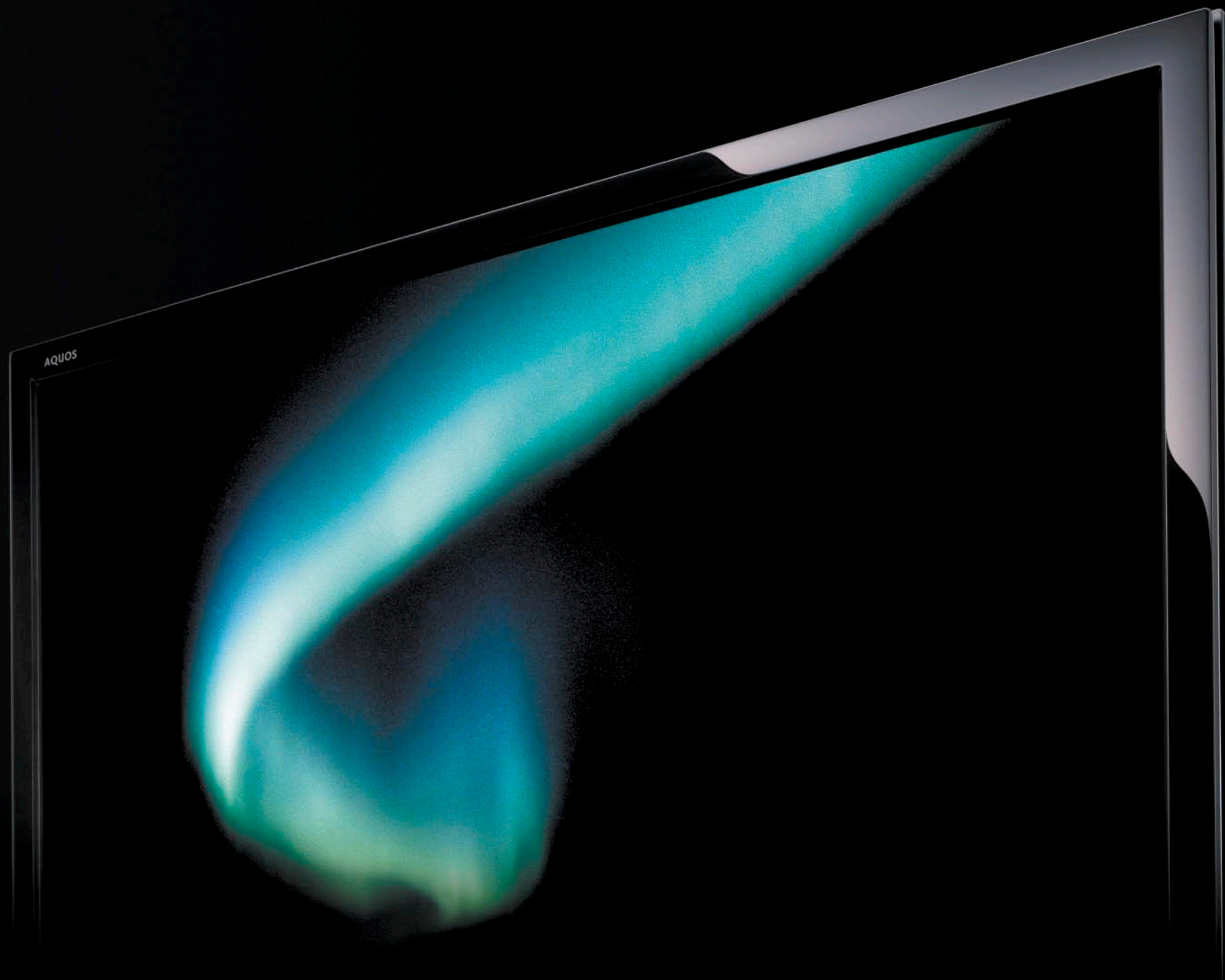
There really is always more to see.



AQUOS provides contentment wherever it is placed.

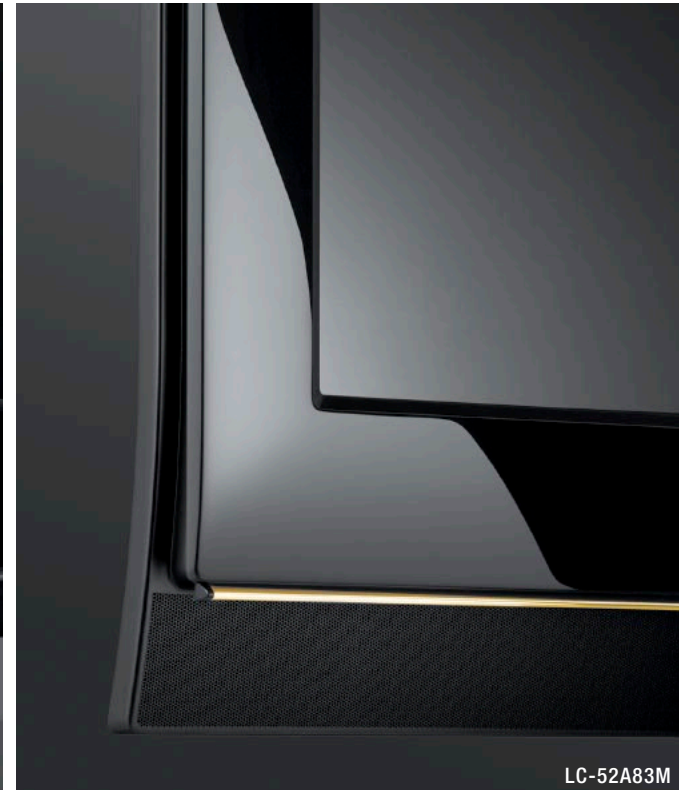


LC-46A63M



LC-46A63M

The AQUOS design is as stylish as a work of art.



SHARP LCD TV Lineup

AQUOS Premium



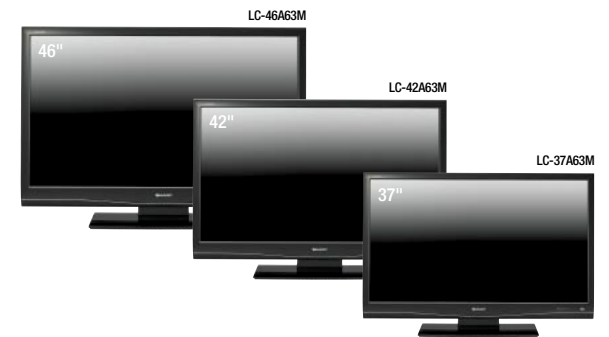
G5 Model



AQUOS Slim-Line Design



A83 Series



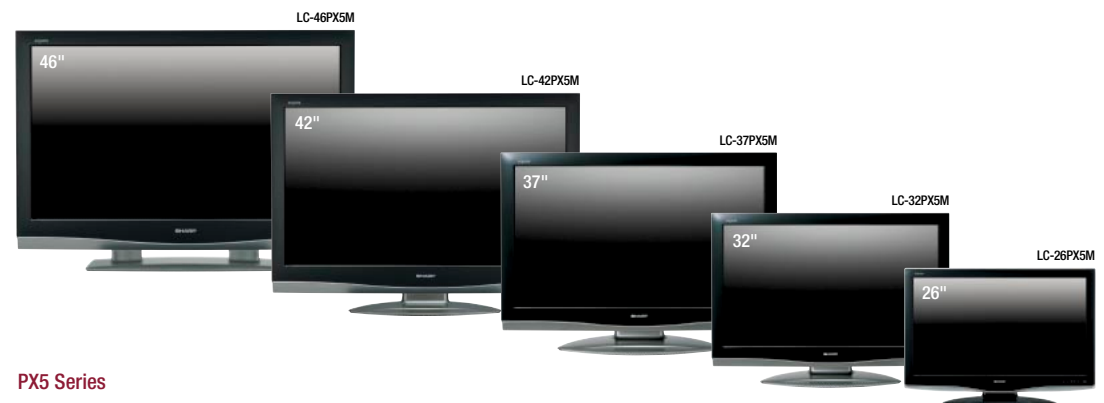
A63 Series



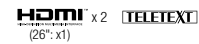
AQUOS WXGA



A53 Series



PX5 Series



Model Series	Screen Size	100Hz/120Hz Fine Motion Advanced	Panel	HDMI	PC-Input	RGB Plus
AQUOS Premium						
G5	65"		Full-HD (1,920 x 1,080)	—	● (DVI-I)	●
AQUOS Slim-Line Design						
A83	52"/46"/42"	●	Full-HD (1,920 x 1,080)	x 3	● (15 pin D-sub)	●
A63	46"/42"/37"	—		x 3	● (15 pin D-sub)	●
AQUOS WXGA						
A53	42"/37"/32"	●	WXGA (1,366 x 768)	x 2	● (15 pin D-sub)	—
PX5	46"/42"/37"/32"/26"	—		x 2 (26": x1)	● (15 pin D-sub) (Except 26" model)	—
BX5	42"/37"/32"	—		x 2	● (15 pin D-sub)	—
BX6	37"/32"	—		x 2	● (15 pin D-sub)	—
AX5	37"/32"	—		x 1	—	—
AQUOS Personal						
A33	18.5"	—	WXGA (1,366 x 768)	x 1	● (15 pin D-sub)	—

• Product design may be subject to change without prior notice.

AQUOS Personal



BX5 Series

HDMI x2 TELETEXT



BX6 Series

HDMI x2 TELETEXT



AX5 Series

HDMI TELETEXT



A33 Series

Slim-Frame Design HDMI TELETEXT



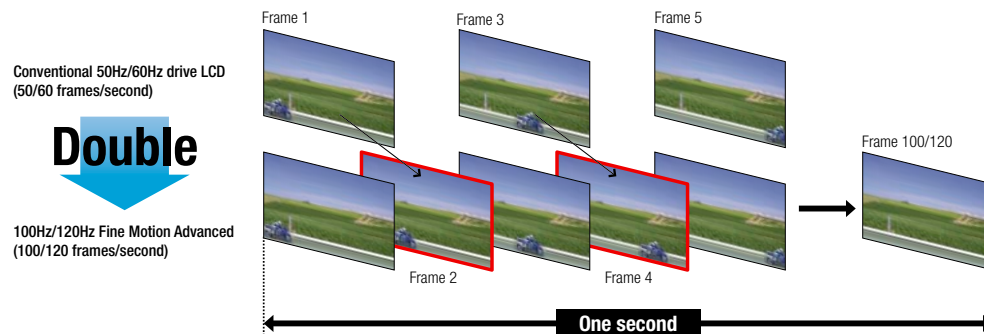
LC-52A83M

One second on an AQUOS produces 100 or 120 pictures to deliver smooth and precise motion.

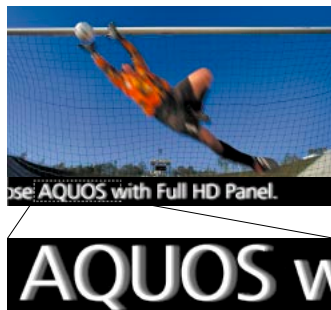


100Hz/120Hz Fine Motion Advanced

New AQUOS models use 100Hz/120Hz Fine Motion Advanced technology developed from Sharp's highly advanced LCD technology. This provides a picture with 100/120 frames per second (double the conventional 50/60 frames per second) by supplementing the picture from the preceding and following scenes using Sharp's unique algorithm. The result is the world's first 100Hz/120Hz Fine Motion Advanced on full high-definition LCD TVs. Also, the technology coupled with the new Advanced Super View LCD developed for high-speed moving images provides smooth and clear pictures for quickly moving sports scenes and clear lettering in moving captions without motion blur. (A83 and A53 series)



Example with motion blur



Example of 100Hz/120Hz Fine Motion Advanced without motion blur



Full-HD Panel

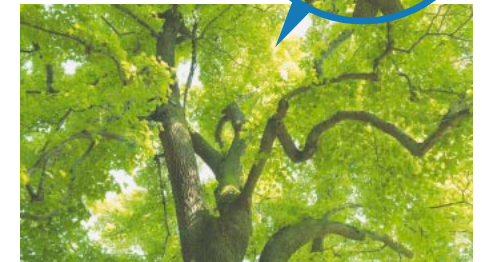
AQUOS uses a 16:9 full-HD panel (1,920 x 1,080 pixels) to deliver high resolution with the same quality as the 1080p/1080i picture signal format of high-definition broadcasting and Blu-ray discs. With twice the image information of WXGA panels (1,366 x 768 pixels), AQUOS provides dynamic entertainment with outstanding detail and precision. (G5, A83 and A63 series)

WXGA panels deliver only about 50% of the image information



WXGA panel

Full-HD panels deliver high-resolution pictures with twice the precision.



Full-HD panel



LC-46A63M

With colours faithfully reproduced and high contrast, you will clearly see the difference between dusk and dawn on an AQUOS.

Dynamic Contrast

The latest LCD technology achieves a high contrast ratio of 10,000:1 (A83 and A63 series). This enhances clarity and expressiveness of black colours, providing more realistic pictures with fine gradations for movies and other video content. It also delivers a 2,000:1 panel contrast (A83 and A63 series), which enables the panel to produce blacker blacks and vivid colours even in brightly lit living rooms to a degree possible only with LCD. Even brilliant fireworks in night sky can be viewed with vivid and realistic colours.



Images with poor contrast



Crisp and clear AQUOS image

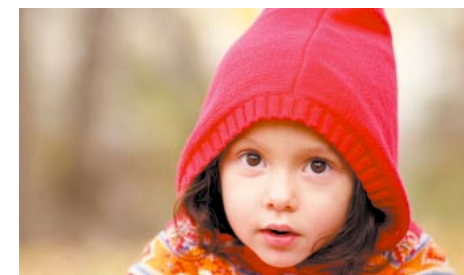


RGB Plus

RGB Plus enables expression of pure red with the addition of crimson red to the three conventional colour wavelengths (blue, green and red). Diversifying the red wavelength enables expression of deep colouring such as for wine red and it also enables reproduction of neutral colours such as translucent clear natural skin or healthy skin. (RGB Plus: G5, A83 and A63 Series)



Example of narrow colour reproductivity range



RGB plus multi-wavelength backlight

Highlights of AQUOS Technology



Full-HD 1080P

Full HDTV resolution in progressive format



Full-HD 1080

Full HDTV resolution



100Hz/120Hz Fine Motion Advanced

The full-HD panel uses a newly developed 100Hz/120Hz Fine Motion Advanced technology that recreates images with twice the number of frames as conventional systems, resulting in a high response speed for moving scenes.



High-Definition Multimedia Interface

HDMI is an interface for digital audio/video signals. HDMI is compatible with the HDCP copy protection standard.



RGB Plus

Background lighting with four instead of three colours. The additional crimson-red enables the display of especially natural colours.



Full 10-Bit Signal Processing

Full 10-bit signal processing reproduces images with a greater variety of colours and more precise colour gradation.



SRS TruSurround

SRS Trusurround XT produces a multichannel audio experience that creates a sensation of being surrounded by sound while using only two front-facing speakers. The listener can experience 5.1-channel content without needing five speakers and a subwoofer. In addition, dialogue is produced with greater clarity and enhanced bass is delivered even from small speakers.



Audyssey EQ

Audyssey EQ eliminates sound distortion by equalizing the sound system for a typical listening room by correcting for time and frequency problems.



Audyssey Spatial EQ

Audyssey Spatial EQ optimizes the sound stage, clearly presenting left, centre and right content and creating the impression of surround sound. Voices and dialogue become focused and intelligible.

Advanced Super View

Non-reflective LCD panel particularly important when viewing television in daylight so that objects are not reflected in the picture.

Dynamic Contrast

Important for deep, natural colours, especially for black.

Viewing angle

The picture can be viewed with high contrast from almost any seating position in 176°.

Optical Picture Control

A light sensor on the LCD TV adjusts the background lighting to the surrounding lighting and therefore helps to save electricity

RS-232C

Interface for controlling the LCD TV from a PC.

Slim-line Design with Space-saving, Lightweight and Elegant Body

With Sharp's advantages of integrated production, an integrated structure design promotes coordination between module and TV components and eliminates wasteful component redundancy, resulting in an extensively reduced frame width and depth on the new AQUOS series, which enhances the beauty of the image on the screen. Because the TV is smaller and slimmer, limited space can be more effectively used and a model with a larger screen size can be installed in the same place. The slimmer profile is achieved with a high-efficiency backlight and high-performance speakers. Also, the lightweight body weighs about 22% less than conventional models* and can be easily mounted on walls.

* For the LC-46A83M compared to the LC-46P7M, each without a stand.





Ecologically Conscious SHARP AQUOS

“Green” Materials

AQUOS Employs Ecological Materials

AQUOS employs non-halogen resins in the cabinet and lead-free solder on the main circuit boards. Thus SHARP uses materials and parts that create less impact on the environment, even after they are disposed of.

Saving Resources

Approx. 60,000-Hour Long-Life Design without Replacement

The LCD panels used in AQUOS TVs suffer almost no performance degradation over their operational lives. Thus users can enjoy beautiful on-screen images during the entire lifetime of the AQUOS LCD TV backlight, which is about 60,000 hours*¹.

Recycling

Use of Eco-Oriented Recycling Materials

The base stands for AQUOS TVs are constructed from a resin comprised at least 20% of recycled materials. Also, the protective packaging materials consist of cardboard and molded pulp made from 100% recyclable paper, helping to further reduce the burden of waste products on the environment.



Kameyama Plant: Plant No.2 (right) has been in operation since Aug. 2006.

The Most Advanced LCD Facility for the Integrated Manufacture of LCD TVs Starts Operation

With the crystallization of Sharp LCD technology and V technology, the most advanced facility for the integrated production of AQUOS from the manufacturing of LCD panels to assembly of final products has been completed in Kameyama, Mie Prefecture, Japan, and started operation in January 2004. Also, Kameyama Plant No.2 started operation in August 2006 producing the world's largest*² eighth-generation motherglass. AQUOS, the new flat TVs for the next era, are produced at these facilities.

The Most Advanced Technology to Keep Environmental Impact to the Minimum

A cogeneration system and photovoltaic power generating system supply the plant with about one-third of the energy needs in-house and thus together with using exhaust heat, the plant reduces CO₂ emissions by about 40% compared with conventional models. In addition, the plant collects all the waste water from the production process and recycles it with water purification technology. The plant is a “Super Green Factory” with highly-advanced technology Sharp has striven for.

*¹ Typical time for power output decrease of about one half, assuming continuous use with brightness or dimming. In standard mode and with a room temperature of 25°C (77°F) (except the LC-19A33M-BK/WH).

*² As of August 2007



Full-HD AQUOS Premium — Maximum Performance for Maximum Enjoyment



LC-65G5M

G5 Model

65-inch Main Unit: LC-65G5M

AVC System: TU-65GAM



Crystal-clear LCD picture quality

- Full-HD panel (1,920 x 1,080 pixels)
- RGB Plus delivers natural pure red and pure green.
- Wide viewing angles of 170° horizontally and vertically
- High brightness of 450 cd/m² and high contrast ratio of 800:1
- High-speed response in reproducing moving images reduces motion blur to reproduce clear images.

High-fidelity sound

- High-resolution sound reproduced from 1-bit digital amplifier
- Virtual Dolby Surround and NICAM/A2 stereo
- Detachable aluminum speaker boxes recreate bass with power.
- High-aperture ratio stainless-steel grills for minimal sound obstruction

Advanced digital interface with DVI-I input

Environmentally conscious design

- The optical picture control (OPC) automatically adjusts the screen luminance according to room brightness or lighting conditions as well as reduces power consumption.
- Long-life backlight and eco-oriented materials and design convenient for recycling

More TV entertainment

- Built-in Teletext circuit
- Multi-format video system (PAL, NTSC, SECAM)
- PC input (DVI-I)
- Built-in RS-232C

AQUOS Slim-line Design

Full-HD AQUOS in a lightweight and low-profile design suitable for wall-hanging — just as you would decorate with your favorite pictures and photos



LC-52A83M



AQUOS Slim-line Design



A83 Series

LC-52/46/42A83M

Debating September 2007 or thereafter



Crystal-clear LCD picture quality

- Full-HD panel (1,920 x 1,080 pixels)
- RGB Plus delivers natural pure red.
- 10-bit signal processing panel
- Wide viewing angles of 176° horizontally and vertically
- High brightness of 450 cd/m² and dynamic contrast ratio of 10,000:1
- 3D Y/C comb filter
- Pure black filter reproduces deeper black.

Sharp's high-technology 100Hz/120Hz Fine Motion Advanced with full-HD panel

- High-speed response in reproducing moving images reduces motion blur to reproduce clear images.

High-fidelity sound

- SRS Trusurround XT sound and NICAM/A2 stereo
- Audyssey EQ delivers sound found only in high-end home theatre.
- 15 W x 2 audio output

Advanced digital interfaces with three HDMI inputs

- 1080P HD signals supported.

Environmentally conscious design

- The advanced optical picture control (OPC) automatically adjusts the screen luminance according to room brightness or lighting conditions as well as reduces power consumption.
- Long-life backlight and eco-oriented materials and design convenient for recycling

More TV entertainment

- Built-in Teletext circuit
- Multi-format TV and video system (PAL, NTSC, SECAM)
- PC input (15-pin D-sub)
- Built-in RS-232C
- Picture and Picture function
- Side Input terminals

* Product design may be subject to change without prior notice.



A63 Series

LC-46/42/37A63M

Debating September 2007 or thereafter



Crystal-clear LCD picture quality

- Full-HD panel (1,920 x 1,080 pixels)
- RGB Plus delivers natural pure red.
- Wide viewing angles of 176° horizontally and vertically
- High brightness of 450 cd/m² and dynamic contrast ratio of 10,000:1
- 3D Y/C comb filter
- Pure black filter reproduces deeper black.

High-fidelity sound

- SRS Trusurround XT sound and NICAM/A2 stereo
- Audyssey EQ delivers sound found only in high-end home theatre.
- 15 W x 2 audio output (LC-46/42A63M)
- 10 W x 2 audio output (LC-37A63M)

Advanced digital interfaces with three HDMI inputs

- 1080P HD signals supported.

Environmentally conscious design

- The advanced optical picture control (OPC) automatically adjusts the screen luminance according to room brightness or lighting conditions as well as reduces power consumption.
- Long-life backlight and eco-oriented materials and design convenient for recycling

More TV entertainment

- Built-in Teletext circuit
- Multi-format TV and video system (PAL, NTSC, SECAM)
- PC input (15-pin D-sub)
- Built-in RS-232C
- Picture and Picture function
- Side Input terminals

Sophisticated vision and design — high-performance HD-ready models



LC-42A53M



A53 Series

LC-42/37/32A53M

Debating September 2007 or thereafter



Crystal-clear LCD picture quality

- High-resolution wide XGA LCD panel (1,366 x 768 pixels)
- Wide viewing angles of 176° horizontally and vertically
- High brightness of 450 cd/m² and dynamic contrast ratio of 7,500:1
- 3D Y/C comb filter

Sharp's high-technology 100Hz/120Hz Fine Motion Advanced

- High-speed response in reproducing moving images reduces motion blur to reproduce clear images.

High fidelity sound

- NICAM/A2 stereo
- Audyssey Spatial EQ makes surround sound match the wide visual image.
- 10 W x 2 audio output

Advanced digital interfaces with two HDMI inputs

Environmentally conscious design

- The advanced optical picture control (OPC) automatically adjusts the screen luminance according to room brightness or lighting conditions as well as reduces power consumption.
- Long-life backlight and eco-oriented materials and design convenient for recycling

More TV entertainment

- Built-in Teletext circuit
- Multi-format TV and video system (PAL, NTSC, SECAM)
- PC input (15-pin D-sub)
- Built-in RS-232C
- Picture and Picture function



PX5 Series

LC-46/42/37/32/26PX5M

HDMI™ x 2 **TELETEXT**
(26": x1)

Crystal-clear LCD picture quality

- High-resolution wide XGA LCD panel (1,366 x 768 pixels)
- Wide viewing angles of 176° horizontally and vertically
- High brightness of 450 cd/m² and dynamic contrast ratio of 7,500:1 (LC-46PX5M)
- High brightness of 450 cd/m² and dynamic contrast ratio of 6,000:1 (LC-42/37/32/26PX5M)
- 3D Y/C comb filter

High-fidelity sound

- Surround sound and NICAM/A2 stereo (LC-46/42/37/32PX5M)
- NICAM/A2 stereo (LC-26PX5M)

Advanced digital interfaces with two HDMI inputs (LC-26PX5M: one HDMI input)

Environmentally conscious design

- The advanced optical picture control (OPC) automatically adjusts the screen luminance according to room brightness or lighting conditions as well as reduces power consumption.
- Long-life backlight and eco-oriented materials and design convenient for recycling

More TV entertainment

- Built-in Teletext circuit
- Multi-format TV and video system (PAL, NTSC, SECAM)
- PC input (15-pin D-sub) (Except the LC-26PX5M)
- Built-in RS-232C
- Picture and Picture function (Except the LC-26PX5M)



BX5 Series

LC-42/37/32BX5M

HDMI™ x 2 **TELETEXT**

BX6 Series

LC-37/32BX6M

HDMI™ x 2 **TELETEXT**

AX5 Series

LC-37/32AX5M

HDMI™ **TELETEXT**

Crystal-clear LCD picture quality

- High-resolution wide XGA LCD panel (1,366 x 768 pixels)
- Wide viewing angles of 176° horizontally and vertically
- High brightness of 450 cd/m² and high contrast ratio of 1,200:1
- 3D Y/C comb filter

High-fidelity sound

- Surround sound and NICAM/A2 stereo (BX5 and BX6 series)
- NICAM/A2 stereo (AX5 series)
- Large-aperture metal grills for minimal sound obstruction (BX5 and BX6 series)

Advanced digital interfaces with two HDMI inputs (BX5 and BX6 series)

Advanced digital interfaces with HDMI input (AX5 series)

Environmentally conscious design

- The advanced optical picture control (OPC) automatically adjusts the screen luminance according to room brightness or lighting conditions as well as reduces power consumption.
- Long-life backlight and eco-oriented materials and design convenient for recycling

More TV entertainment

- Built-in Teletext circuit
- Multi-format TV and video system (PAL, NTSC, SECAM)
- PC input (15-pin D-sub) (BX5 and BX6 series)
- Built-in RS-232C
- Picture and Picture (BX5 and BX6 series)
- Side input terminals (BX5 and BX6 series)

* Product design may be subject to change without prior notice.

Television enjoyment anywhere with small AQUOS models



LC-19A33M-WH



LC-19A33M-BK

A33 Series

LC-19A33M-BK/WH

Debating September 2007 or thereafter



Crystal-clear LCD picture quality

- High-resolution wide XGA LCD panel (1,366 x 768 pixels)
- Wide viewing angles of 160° horizontally and vertically
- High brightness of 300 cd/m² and panel contrast ratio of 400:1
- 3D Y/C comb filter

Advanced digital interface with HDMI input

High-fidelity sound

- Surround sound and NICAM/A2 stereo

Environmentally conscious design

- The advanced optical picture control (OPC) automatically adjusts the screen luminance according to room brightness or lighting conditions as well as reduces power consumption.
- Long-life backlight and eco-oriented materials and design convenient for recycling

More TV entertainment

- Built-in Teletext circuit
- Multi-format TV and video system (PAL, NTSC, SECAM)
- PC input (15-pin D-sub)
- Built-in RS-232C

Category		AQUOS Premium	AQUOS Slim-line Design						AQUOS WXGA		
Model Number		LC-65G5M	LC-52A83M	LC-46A83M	LC-42A83M	LC-46A63M	LC-42A63M	LC-37A63M	LC-42A53M	LC-37A53M	LC-32A53M
Video	Screen Size	65-inch Wide	52-inch Wide	46-inch Wide	42-inch Wide	46-inch Wide	42-inch Wide	37-inch Wide	42-inch Wide	37-inch Wide	32-inch Wide
	Resolution	1,920 x 1,080	1,920 x 1,080			1,920 x 1,080			1,366 x 768		
	Luminance (cd/m ²)	450	450			450			450		
	Dynamic Contrast Ratio	—	10,000 : 1			10,000 : 1			7,500 : 1		
	Panel Contrast Ratio	800 : 1	2,000 : 1			2,000 : 1			1,500 : 1		
	Viewing Angle (H/V)	170°/170°	176°/176°			176°/176°			176°/176°		
	Lamp Life	60,000 hours*1	60,000 hours*1			60,000 hours*1			60,000 hours*1		
	RGB Plus	●	●			●			—		
100Hz/120Hz Fine Motion Advanced		—	●			—			●		
Tuner	TV Receiving Systems	PAL-B/G, -D/K, -I, SECAM-B/G, -D/K, -L, -L'	PAL-B/G, -D/K, -I, NTSC-M, SECAM-B/G, -D/K, -K/K1			PAL-B/G, -D/K, -I, NTSC-M, SECAM-B/G, -D/K, -K/K1			PAL-B/G, -D/K, -I, NTSC-M, SECAM-B/G, -D/K, -K/K1		
	Video Colour System	PAL / SECAM / NTSC 3.58 NTSC 4.43 / PAL 60	PAL / SECAM / NTSC 3.58 / NTSC 4.43 / PAL 60			PAL / SECAM / NTSC 3.58 / NTSC 4.43 / PAL 60			PAL / SECAM / NTSC 3.58 / NTSC 4.43 / PAL 60		
	Tuner (Preset Channels)	Auto channel sort	Auto channel sort			Auto channel sort			Auto channel sort		
Audio	Amplifier	1-Bit Digital	Digital			Digital			Digital		
	Audio Output	10W + 10W	15W + 15W			15W + 15W		10W + 10W	10W + 10W		
	Speakers	ø8.0cm x 2, ø2.5cm x 2	10 x 4cm x 4			10 x 4cm x 4		10 x 4cm x 2, ø2cm x 2	10 x 4cm x 4	10 x 4cm x 2, ø2cm x 2	
	Stereo System	NICAM / A2	NICAM / A2			NICAM / A2			NICAM / A2		
	Surround	● (Virtual Dolby (PRO LOGIC))	● (SRS TruSurround XT)			● (SRS TruSurround XT)			● (Auddysey Spatial EQ)		
Convenience	OSD Language	English / Chinese / Arabic	English / Simplified Chinese / Traditional Chinese / Arabic			English / Simplified Chinese / Traditional Chinese / Arabic			English / Simplified Chinese / Traditional Chinese / Arabic		
	TELETEXT	●	●			●			●		
	Picture and Picture	●	●			●			●		
	Picture and Text	●	●			●			●		
	OPC (Optical Picture Control)	● (Advanced)	● (Advanced)			● (Advanced)			● (Advanced)		
	Terminals	Video In	4 (Scart x 3, RCA pin x 1)	3			3			2	
S Video In		1	1			1			1		
Component In		1	2			2			2		
HDMI		—	3 (Rear2 Side1)			3 (Rear2 Side1)		3 (Rear3)	2		
DVI-I		1	—			—			—		
RS-232C		1	1			1			1		
15 pin D-sub		—	1			1			1		
Digital Audio Output		1 (Optical)	1 (Optical)			1 (Optical)			1 (Optical)		
AV Output		1	1			1			1		
Power Supply		110–240V 50Hz	110–240V 50Hz / 60Hz			110–240V 50Hz / 60Hz			110–240V 50Hz / 60Hz		
Power Consumption		Approx. 559W	Approx. 307W	Approx. 271W	Approx. 250W	Approx. 256W	Approx. 242W	Approx. 195W	Approx. 224W	Approx. 170W	Approx. 146W
Dimensions (mm) (WxHxD)	Without Stand	1,572 x 1,045 x 150	1,237 x 774 x 95	1,101 x 698 x 95	1,004 x 646 x 95	1,101 x 698 x 95	1,004 x 646 x 95	898 x 581 x 95	1,031 x 675 x 140	920 x 600 x 116	797 x 533 x 116
	With Stand	1,572 x 1,160 x 435	1,237 x 836 x 325	1,101 x 760 x 325	1,004 x 708 x 305	1,101 x 760 x 325	1,004 x 708 x 305	898 x 641 x 276	1,031 x 733 x 292	920 x 657 x 292	797 x 544 x 250
	AVC System	432 x 95 x 303	—	—	—	—	—	—	—	—	—
Net Weight (kg)	Without Stand	Approx. 68.5	Approx. 29.0	Approx. 24.5	Approx. 21.5	Approx. 24.0	Approx. 21.0	Approx. 17.5	Approx. 32.0	Approx. 20.5	Approx. 16.5
	With Stand	Approx. 76.5	Approx. 34.0	Approx. 29.5	Approx. 26.5	Approx. 29.0	Approx. 26.0	Approx. 20.5	Approx. 34.5	Approx. 23.0	Approx. 18.5
	AVC System	Approx. 6.9	—	—	—	—	—	—	—	—	—

Dolby®, Pro Logic, and the double D symbol are registered trademarks of Dolby Laboratories. HDMI, the HDMI logo and High-Definition Multimedia Interface are trademarks or registered trademarks of HDMI Licensing LLC.

Design and specifications are current as of September 2007, but are subject to change without prior notice. TruSurround XT, SRS and the ● symbol are trademarks of SRS Labs, Inc. Manufactured under license from Audyssey Laboratories. Audyssey EQ and Audyssey Spatial EQ are a trademark of Audyssey Laboratories.

*1 Typical time for power output decrease of about one half, assuming continuous use with brightness or dimming in standard mode and with a room temperature of 25°C (77°F).

Category		AQUOS WXGA										
Model Number		LC-46PX5M	LC-42PX5M	LC-37PX5M	LC-32PX5M	LC-26PX5M	LC-42BX5M	LC-37BX5M	LC-32BX5M	LC-37BX6M	LC-32BX6M	
Video	Screen Size	46-inch Wide	42-inch Wide	37-inch Wide	32-inch Wide	26-inch Wide	42-inch Wide	37-inch Wide	32-inch Wide	37-inch Wide	32-inch Wide	
	Resolution	1,366 x 768					1,366 x 768			1,366 x 768		
	Luminance (cd/m ²)	450					450			450		
	Dynamic Contrast Ratio	7,500 : 1	6,000 : 1					—			—	
	Panel Contrast Ratio	1,500 : 1	1,200 : 1					1,200 : 1			1,200 : 1	
	Viewing Angle (H/V)	176°/176°					176°/176°			176°/176°		
	Lamp Life	60,000 hours*1					60,000 hours*1			60,000 hours*1		
	RGB Plus	—					—			—		
100Hz/120Hz Fine Motion Advanced		—					—			—		
Tuner	TV Receiving Systems	PAL-B/G, -D/K, -I, NTSC-M, SECAM-B/G, -D/K, -K/K1					PAL-B/G, -D/K, -I, NTSC-M, SECAM-B/G, -D/K, -K/K1			PAL-B/G, -D/K, -I, NTSC-M, SECAM-B/G, -D/K, -K/K1		
	Video Colour System	PAL / SECAM / NTSC 3.58 / NTSC 4.43 / PAL 60					PAL / SECAM / NTSC 3.58 / NTSC 4.43 / PAL 60			PAL / SECAM / NTSC 3.58 / NTSC 4.43 / PAL 60		
	Tuner (Preset Channels)	Auto channel sort					Auto channel sort			Auto channel sort		
Audio	Amplifier	Digital					Digital			Digital		
	Audio Output	10W + 10W					10W + 10W			10W + 10W		
	Speakers	10 x 4cm x 4	10 x 4cm x 2, ø2.0cm x 2			10 x 4cm x 2	ø6.5cm x 4			ø6.5cm x 4		
	Stereo System	NICAM / A2					NICAM / A2			NICAM / A2		
	Surround	●				—	●			●		
	OSD Language	English / Chinese / Arabic					English / Chinese / Arabic			English / Chinese / Arabic		
Convenience	TELETEXT	●					●			●		
	Picture and Picture	●			—		●			●		
	Picture and Text	●					●			●		
	OPC (Optical Picture Control)	● (Advanced)					● (Advanced)			● (Advanced)		
	Terminals	Video In	2					3			3	
	S Video In	—					1			1		
	Component In	2			1		2			2		
	HDMI	2			1		2			2		
	DVI-I	—					—			—		
	RS-232C	1					1			1		
	15 pin D-sub	1			—		1			1		
	Digital Audio Output	—					—			—		
	AV Output	1					1			1		
Power Supply		110–240V 50Hz / 60Hz					110–240V 50Hz / 60Hz	110–240V 50Hz		110–240V 50Hz		
Power Consumption		Approx. 262W	Approx. 225W	Approx. 171W	Approx. 158W	Approx. 120W	Approx. 225W	Approx. 171W	Approx. 158W	Approx. 171W	Approx. 158W	
Dimensions (mm) (WxHxD)	Without Stand	1,127 x 728 x 124	1,031 x 675 x 140	920 x 600 x 116	797 x 533 x 116	662 x 457 x 101	1,031 x 711 x 139	932 x 655 x 120	815 x 590 x 120	1,086 x 578 x 120	967 x 512 x 120	
	With Stand	1,127 x 790 x 309	1,031 x 733 x 292	920 x 657 x 292	797 x 590.5 x 250	662 x 515 x 243	1,031 x 772 x 306	932 x 718.5 x 306	815 x 653 x 306	1,086 x 653 x 306	967 x 587 x 306	
	AVC System	—	—	—	—	—	—	—	—	—	—	
Net Weight (kg)	Without Stand	Approx. 30.0	Approx. 30.1	Approx. 20.3	Approx. 16.5	Approx. 12.0	Approx. 31.5	Approx. 22.0	Approx. 18.5	Approx. 22.0	Approx. 18.5	
	With Stand	Approx. 34.5	Approx. 32.7	Approx. 22.9	Approx. 18.4	Approx. 14.5	Approx. 37.0	Approx. 25.5	Approx. 22.0	Approx. 25.5	Approx. 22.0	
	AVC System	—	—	—	—	—	—	—	—	—	—	

Dolby®, Pro Logic, and the double D symbol are registered trademarks of Dolby Laboratories. HDMI, the HDMI logo and High-Definition Multimedia Interface are trademarks or registered trademarks of HDMI Licensing LLC.

Design and specifications are current as of September 2007, but are subject to change without prior notice. TruSurround XT, SRS and the ● symbol are trademarks of SRS Labs, Inc. Manufactured under license from Audyssey Laboratories. Audyssey EQ and Audyssey Spatial EQ are a trademark of Audyssey Laboratories.

*1 Typical time for power output decrease of about one half, assuming continuous use with brightness or dimming in standard mode and with a room temperature of 25°C (77°F).

Category		AQUOS WXGA		AQUOS Personal
Model Number		LC-37AX5M	LC-32AX5M	LC-19A33M-BK/WH
Video	Screen Size	37-inch Wide	32-inch Wide	18.5-inch Wide
	Resolution	1,366 x 768		1,366 x 768
	Luminance (cd/m ²)	450		300
	Dynamic Contrast Ratio	—		—
	Panel Contrast Ratio	1,200 : 1		400 : 1
	Viewing Angle (H/V)	176°/176°		160°/160°
	Lamp Life	60,000 hours*1		50,000 hours*1
	RGB Plus	—		—
Tuner	100Hz/120Hz Fine Motion Advanced	—		—
	TV Receiving Systems	PAL-B/G, -D/K, -I, NTSC-M, SECAM-B/G, -D/K, -K/K1		PAL-B/G, -D/K, -I, NTSC-M, SECAM-B/G, -D/K, -K/K1
	Video Colour System	PAL / SECAM / NTSC 3.58 / NTSC 4.43 / PAL 60		PAL / SECAM / NTSC 3.58 / NTSC 4.43 / PAL 60
	Tuner (Preset Channels)	Auto channel sort		Auto channel sort
Audio	Amplifier	Digital		Digital
	Audio Output	10W + 10W		2W + 2W
	Speakers	ø6.5cm x 4		7.5 x 3cm x 2
	Stereo System	NICAM / A2		NICAM / A2
	Surround	—		● (Sound Wide)
Convenience	OSD Language	English / Chinese / Arabic		English / Chinese / Arabic
	TELETEXT	●		●
	Picture and Picture	—		—
	Picture and Text	●		●
	OPC (Optical Picture Control)	● (Advanced)		● (Advanced)
Terminals	Video In	2		1
	S Video In	—		1
	Component In	1		1
	HDMI	1		1
	DVI-I	—		—
	RS-232C	1		1
	15 pin D-sub	—		1
	Digital Audio Output	—		—
	AV Output	1		—
Power Supply		110–240V 50Hz		110–240V 50Hz / 60Hz
Power Consumption		Approx. 171W	Approx. 158W	Approx. 36W
Dimensions (mm) (WxHxD)	Without Stand	932 x 655 x 120	815 x 590 x 120	462 x 320 x 75
	With Stand	932 x 718.5 x 306	815 x 653 x 306	462 x 360 x 196
	AVC System	—	—	—
Net Weight (kg)	Without Stand	Approx. 21.2	Approx. 17.4	Approx. 4.3
	With Stand	Approx. 24.5	Approx. 20.7	Approx. 5.1
	AVC System	—	—	—

Dolby® , Pro Logic, and the double D symbol are registered trademarks of Dolby Laboratories. HDMI, the HDMI logo and High-Definition Multimedia Interface are trademarks or registered trademarks of HDMI Licensing LLC.

Design and specifications are current as of September 2007, but are subject to change without prior notice. TruSurround XT, SRS and the ● symbol are trademarks of SRS Labs, Inc. Manufactured under license from Audyssey Laboratories. Audyssey EQ and Audyssey Spatial EQ are a trademark of Audyssey Laboratories.

*1 Typical time for power output decrease of about one half, assuming continuous use with brightness or dimming in standard mode and with a room temperature of 25°C (77°F).

Qualified to accompany you through life

Sharp has become synonymous with LCD technology.

Ever since the release of the first LCD pocket calculator in 1973, and still today. No surprise then that the latest generation of LCD televisions comes from the Sharp plant in Kameyama, one of the most modern production facilities in the world.



LCD Pocket Calculator

First electronic calculator. A revolution in LCD technology that sets the stage for future developments.



TFT LCD Colour Display

The world's first 14" colour TFT LCD, delivering a sharp bright picture on a display only 1.1" thick.



LCD Camera Display

The debut of the LCD ViewCam solidifies Sharp's position in the vanguard of LCD technology.



28" TFT LCD Display

The 28" TFT LCD display, the world's largest, brings a new level of excitement to the consumer market.



AQUOS LCD Television

Sharp introduces the first AQUOS LCD TV models, with the industry's highest brightness – winning numerous awards and enthusiastic global reviews.



3D LCD Monitor

Sharp redefines LCD technology once again with a 3-D screen that achieves an unprecedented level of realism.



Kameyama LCD Plant

Sharp begins production at the world's first fully integrated LCD facility. This "super-green factory" sets new standards in eco-innovation.



Dual-View LCD is exhibited at WPC EXPO 2005

Sharp develops a new Dual-View LCD. Volume production begins in 2005, marking the introduction of the world's first practical application of this technology.



Triple-View LCD

Sharp develops the industry's first Triple-View LCD, which can display three full-screen images at the same time.

● 1973 ● 1988 ● 1992 ● 1995 ● 1999 ● 2001 ● 2002 ● 2003 ● 2004 ● 2005 ● 2006



LC-20V1M



LC-20C2M



LC-30HV2M



LC-37HV4M



LC-45G1M



LC-65G5M



LC-52G7M

World's Largest LCD TV*¹ — AQUOS 108"



Screen size = 108V-inch (2,386 H x 1,344 V mm; 2,738 mm on the diagonal)

2007



LC-52A83M



LC-46A63M

*¹ As of August 2007

AQUOS

SHARP

SHARP CORPORATION OSAKA, JAPAN
URL <http://www.sharp-world.com/>