



모델

XG-NV6XM

LCD프로젝터





LCD

10

“ ”

: XG-NV6XM

:

: 

가

:

:

가



: LCD

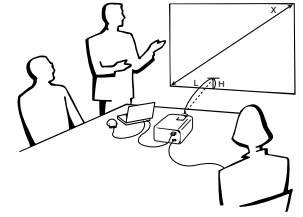
LCD

- 가 / LCD
1. LCD 17. LCD
가
 2. a. LCD 가
 3. LCD 가 b. LCD
 4. (: , ,) . c. LCD 가 LCD 가
d.
 5. LCD LCD 가 가 가가 LCD
 6. — e. LCD
 7. LCD f. LCD 가
 - 가 18. , 가 가
 - 가 19. LCD 가 가
 8. LCD a. -
 9. LCD (LCD) b. -
가 LCD
 10. LCD LCD 가
 11. LCD 가
 12. LCD
 - 13.
 14. 가
 15. LCD
 16. LCD
가





1. PC (11)

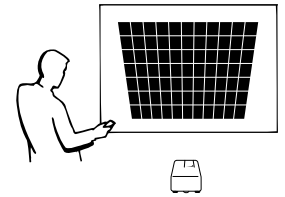


2. **DTV*** DTV 16:9 (13)

3. **RGB** **BNC** BNC (13)

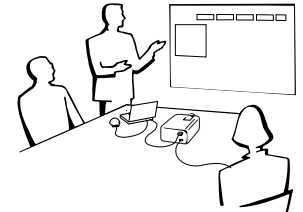
4. **3-D Y/C** **COMB**

5. 130% 102cm 762cm (40-300inch) (19)



6. (19)

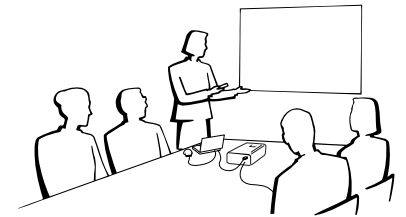
7. (GUI) (23)



8. (GUI) 2

9. **IrCOM** IrCOM PC (25)

10. (29)



11. (36)

12. **XGA** XGA (1,024 × 768)

13. **UXGA** UXGA (1,600 × 1,200) 1,024 × 768

14. (:) (41)

15. " , " , " " 가 (43)

*DTV



.....	2
.....	3
.....	4
.....	5
PDF	
(Windows & Macintosh)	6
.....	7

.....	46
/	47
.....	48
A/S	48



.....	10
1.	10
2.	11

.....	49
.....	49
.....	50
.....	51
RS-232C	53
()	54
.....	56
.....	57
.....	58
.....	62
.....	63



.....	16
1. ON/OFF	16
2. 	18
3. 	21

GUI (Graphical User Interface)	
.....	23
IrCOM	25
.....	26
()	26
.....	27
.....	28
.....	29
.....	30
.....	30
.....	31
.....	32

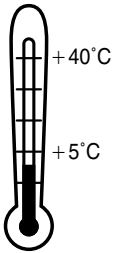
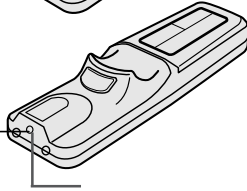
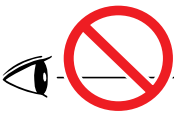
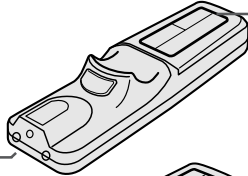


.....	33
.....	34
.....	35
.....	36
.....	37
.....	37
.....	38
I/P	39
.....	39
.....	40
.....	40
.....	41
.....	41
/	42
.....	43
.....	44





LASER RADIATION DO NOT STARE INTO BEAM CLASS 2 LASER PRODUCT	RADIACION LASER NO MIRE AL RAYO PRODUCTO LASER CLASE 2
RAYONNEMENT LASER NE PAS REGARDER DANS LE FAISCEAU APPAREIL A LASER DE CLASSE 2	
Class II	LASERSTRAHLUNG NICHT IN DEN STRAHL DER LASERVORRICHTUNG DER KLASSE II BLICKEN
LAR LASERSTR LEN TITTA INTE IN I LASERSTR KLASS 2 LASER PRODUKT.	LASERSÄTEILVÄ ÄLÄKÄTÄSO SOURAAN SÄTEESEEN LUOKAN 2 LASERTUOTE
LASEROVÉ ZÁŘENÍ NEHLEDTE DO PAPRSKU LASEROVÝ VÝROBEK TŘIDY 2	LASEROVÉ ŽIARENIE NEPOZERAJTE SA DO LÚČA LASEROVÝ VÝROBOK TRIEDY 2



온도 모니터

Class II

- ()
- +5°C 40°C
- ' ,

가 () LCD LCD

- () 10cm
- ON 10

가 “ ” “ ” 가 가 47 90 “ /

주



PDF PC Adobe Acrobat Reader CD-ROM
CD-ROM

가 (http://www.adobe.com)

Adobe Acrobat Reader

CD-ROM Acrobat Reader

Windows :

- ① CD-ROM
- ② “ ”
- ③ “ CD-ROM ”
- ④ “ manuals ”
- ⑤ “ acrobat ”
- ⑥ “ windows ”
- ⑦

CD-ROM

Macintosh :

- ① CD-ROM
- ② “ CD-ROM ”
- ③ “ manuals ”
- ④ “ acrobat ”
- ⑤ “ mac ”
- ⑥

CD-ROM

OS : (http://www.adobe.com)

Acrobat Reader

CD-ROM

Acrobat Reader

PDF

Windows :

- ① CD-ROM
- ② “ ”
- ③ “ CD-ROM ”
- ④ “ manuals ”
- ⑤ “ xg-nv6xm ”
- ⑥ ()
- ⑦ “ nv6 ”

CD-ROM

pdf

pdf “ saps ”

⑧ pdf

Macintosh :

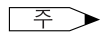
- ① CD-ROM
- ② “ CD-ROM ”
- ③ “ manuals ”
- ④ “ xg-nv6xm ”
- ⑤ ()
- ⑥ “ nv6 ”

CD-ROM

pdf

pdf “ saps ”

⑦ pdf



• pdf

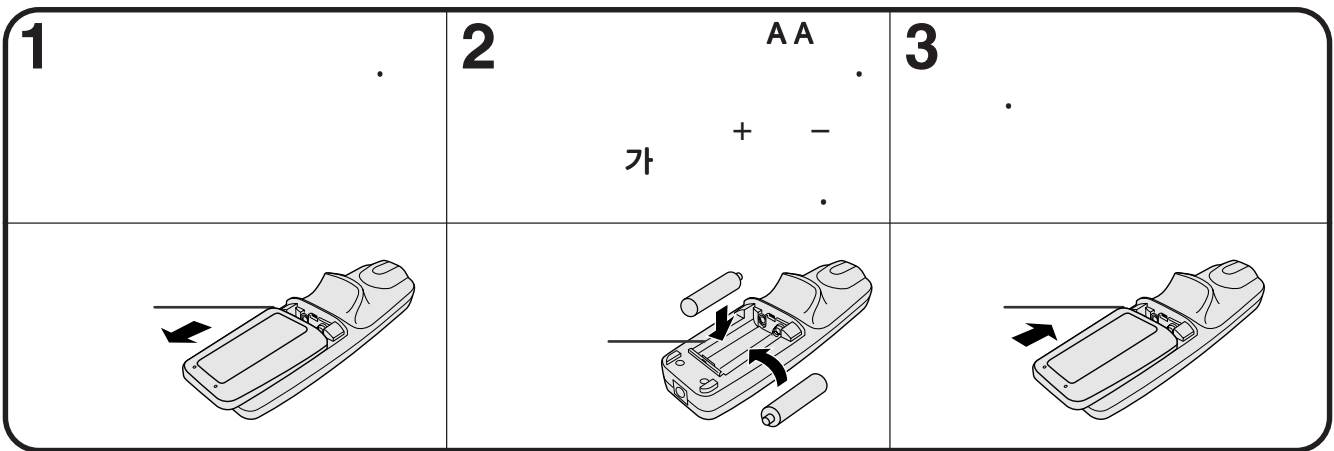
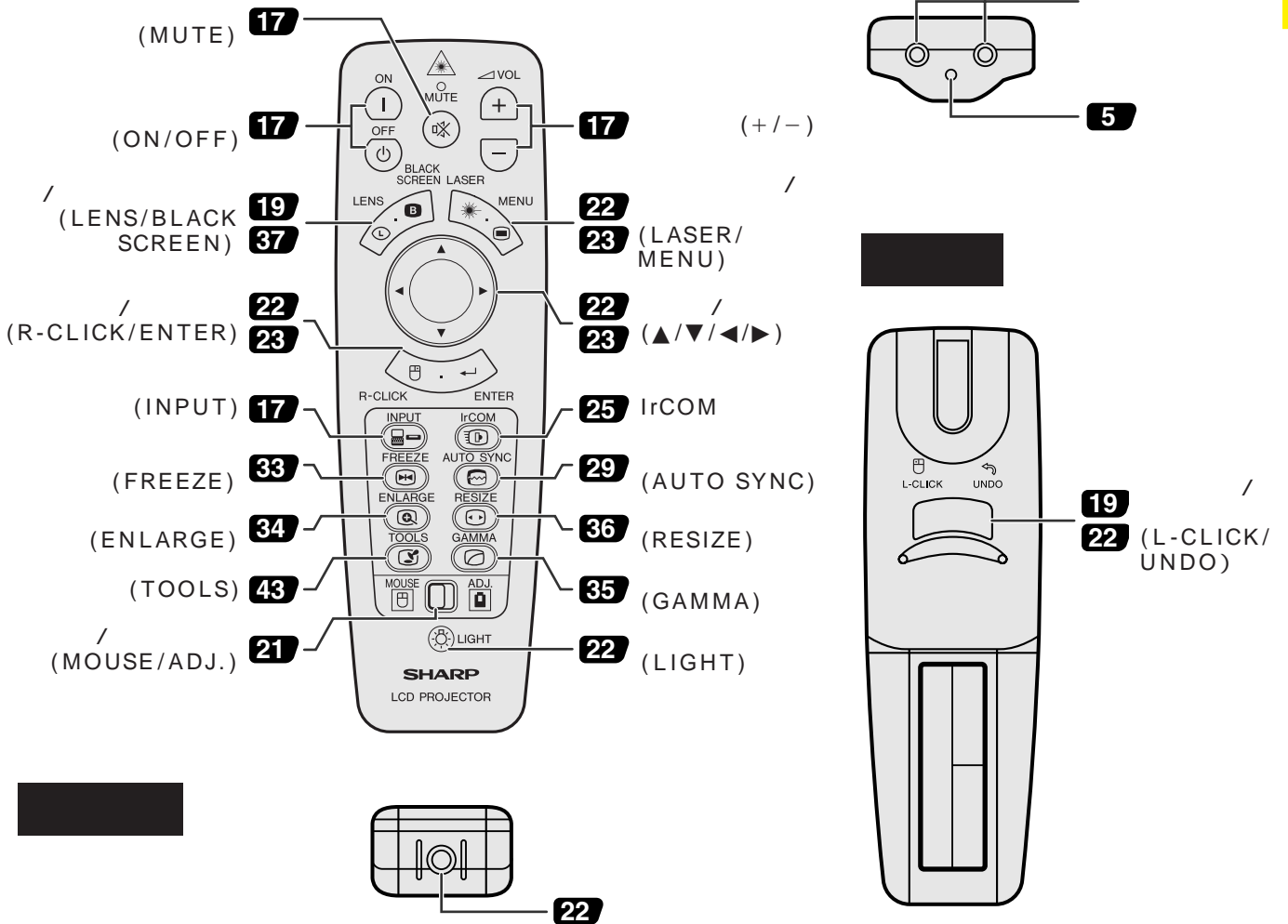
Acrobat Reader

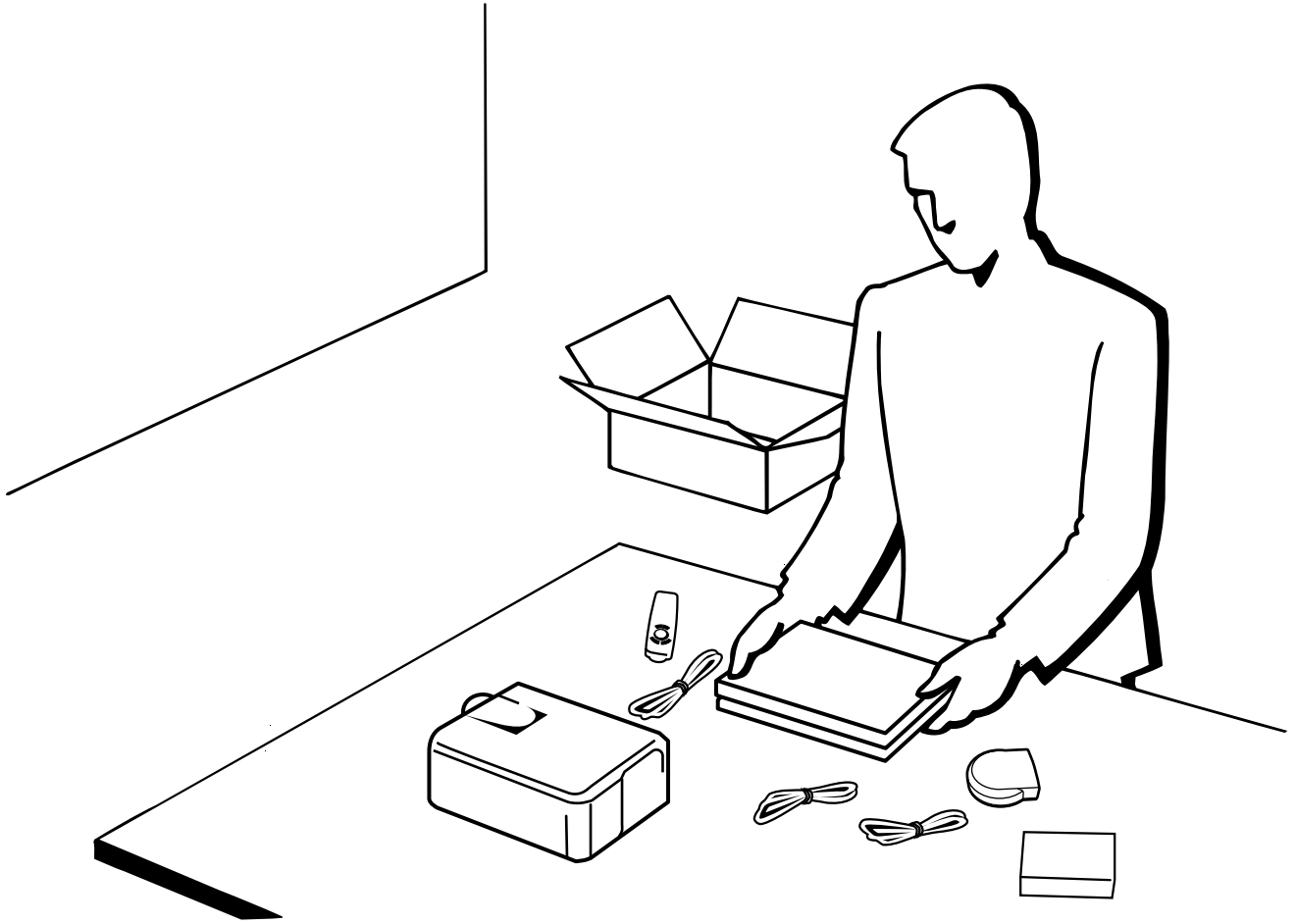
“ File ” , “ Open ”

• CD-ROM

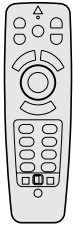
CD-ROM “readme.txt”







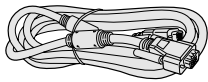
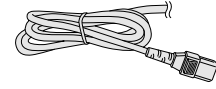
1.



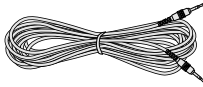
RRMCG1535CESA



AA 2



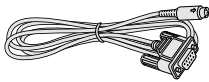
QCNW-5304CEZZ



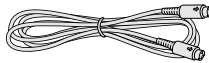
QCNW-4870CEZZ



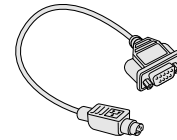
BNC-RCA 3
QPLGJ0107GEZZ



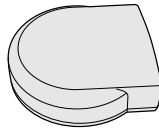
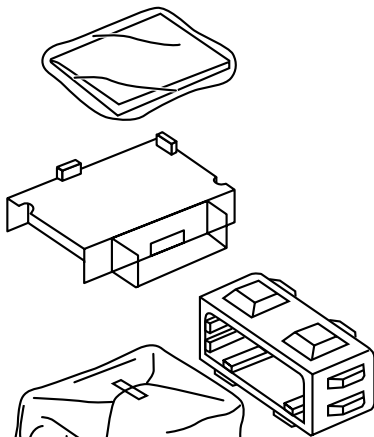
QCNW-5112CEZZ



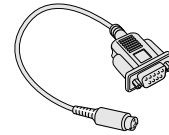
IBM PS/2
QCNW-5113CEZZ



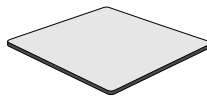
Mac
QCNW-5114CEZZ



RUNTK0661CEZZ



DIN-D-sub RS-232C
QCNW-5288CEZZ



PFILD0080CEZZ



PCAPH1056CESA

CD-ROM

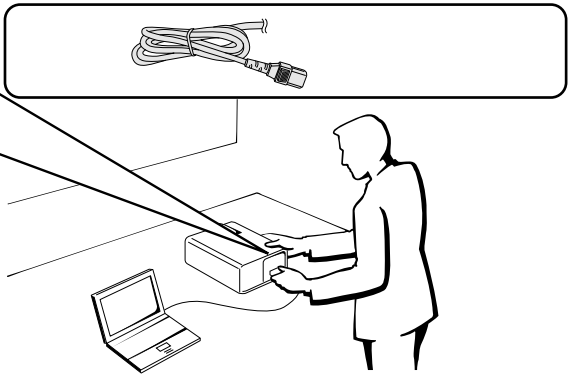
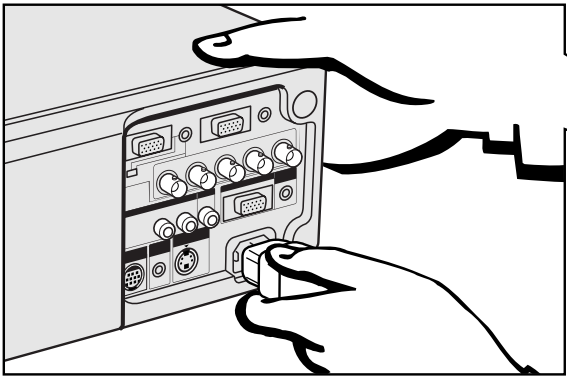
LCD

LCD

IrDA

2.

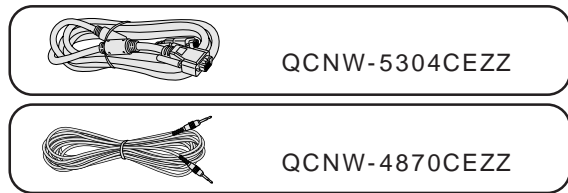
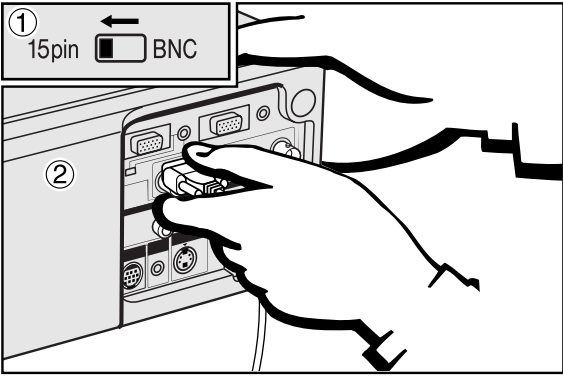
AC



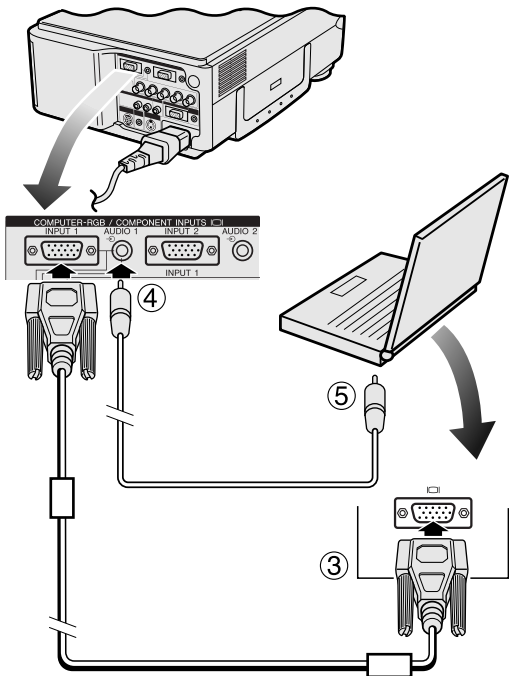
IBM-PC

Macintosh

15



- ① 15 15
- ② 15 / BNC 15
- ③ RGB INPUT1 2 COMPUTER-
- ④



- ④ AUDIO INPUT 1 2
- ⑤
- ⚠ 주의
- OFF
- ON

주

• “ () ” 54 55

“ /RGB ” GUI “ ” (40)

- 주
- Macintosh 가 Macintosh LCD

2.

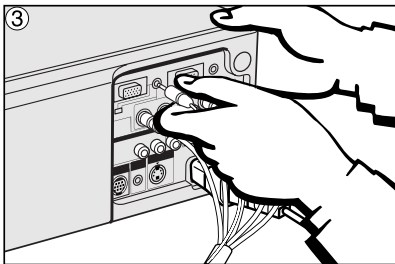
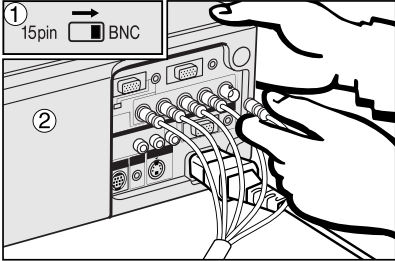
- R (Pr) , G/G sync (Y) , B (Pb) , HD (C sync) VD
- RGB () 5 BNC ()

BNC)

RGB

가

(



- ① 5 BNC BNC INPUT 1
- ② 5 BNC RGB BNC
- ③ AUDIO INPUT 1 2
- ④

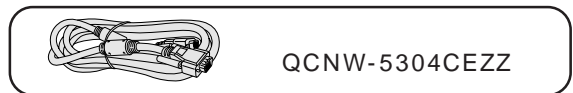
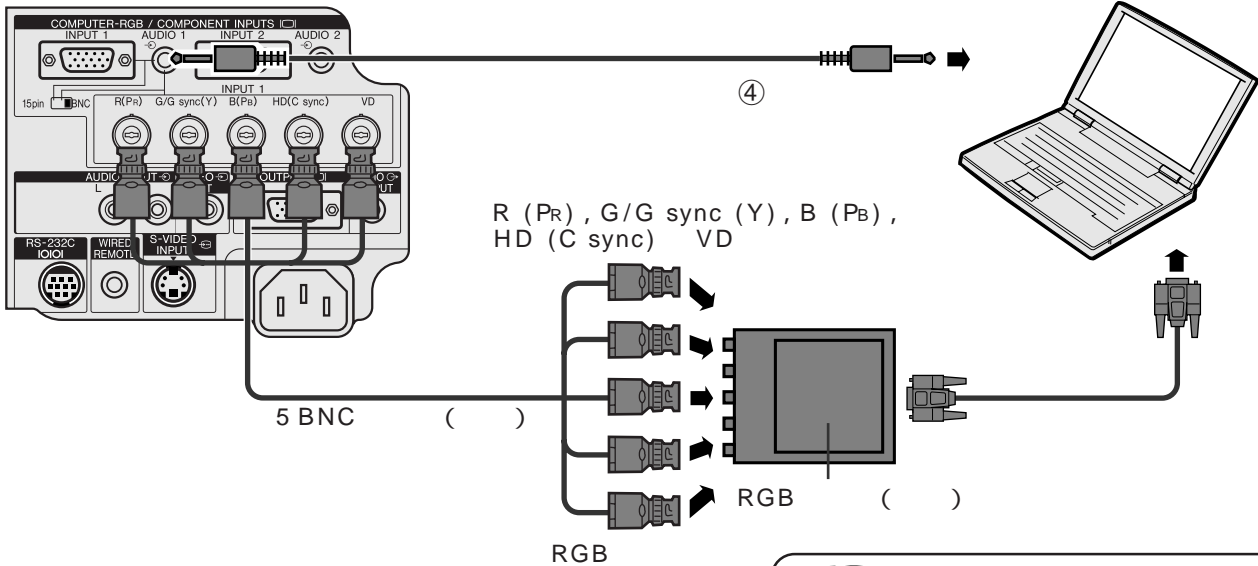
- 주 →
- RCA 3.5mm

IBM-PC (VGA/SVGA/XGA/SXGA/UXGA) Macintosh () 가

RGB " GUI " " " /

주 →

- AUDIO INPUT 1 2 INPUT 1 2



" & " (15) 가 VESA DDC 1/ DDC 2B 가 VESA DDC

• " & " , ON

주 →

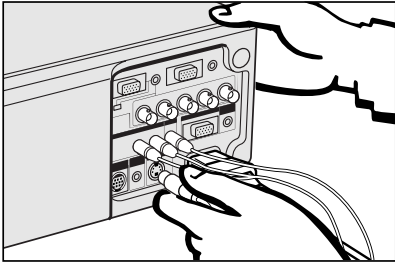
- DDC , & 가 VESA DDC

VCR , , DVD , DTV*



OFF

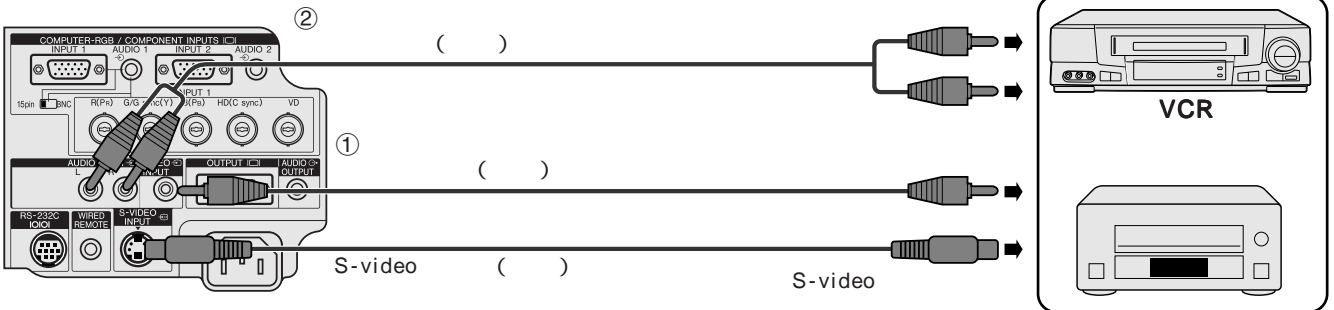
VCR ,



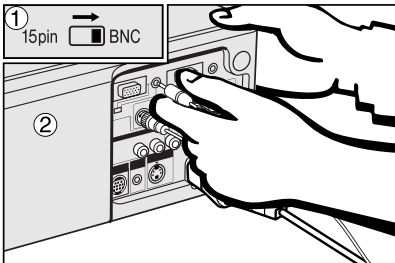
- ① RCA VIDEO INPUT
- ② AUDIO INPUT RCA
- S-VIDEO INPUT



- S-video S-video 가



5 BNC DVD , DTV



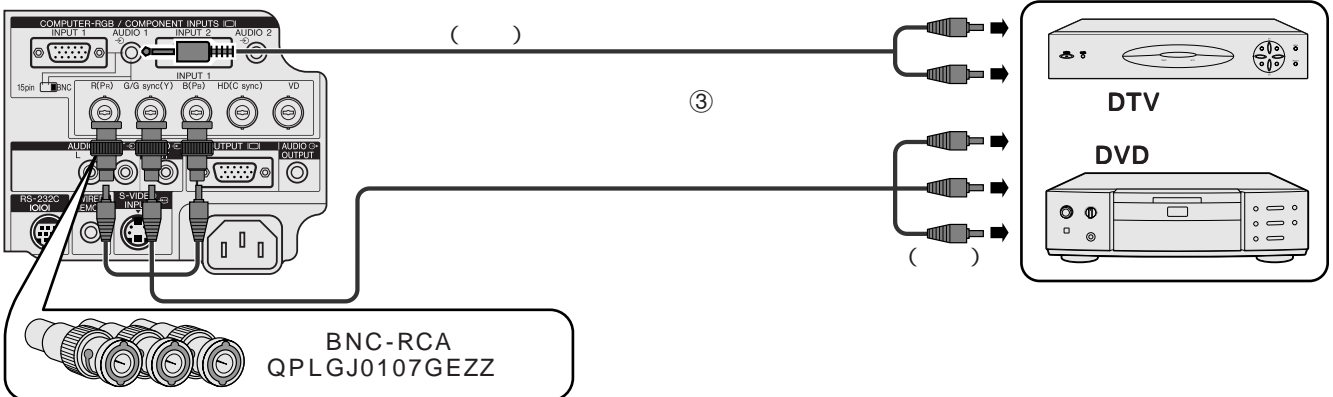
- ① 5 BNC BNC 15 / BNC BNC INPUT 1



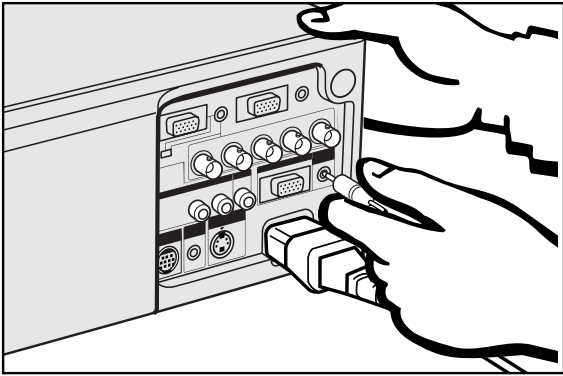
- BNC-RCA RCA
- ② DVD DTV
- ③ AUDIO INPUT 1 2



- RCA 3.5mm



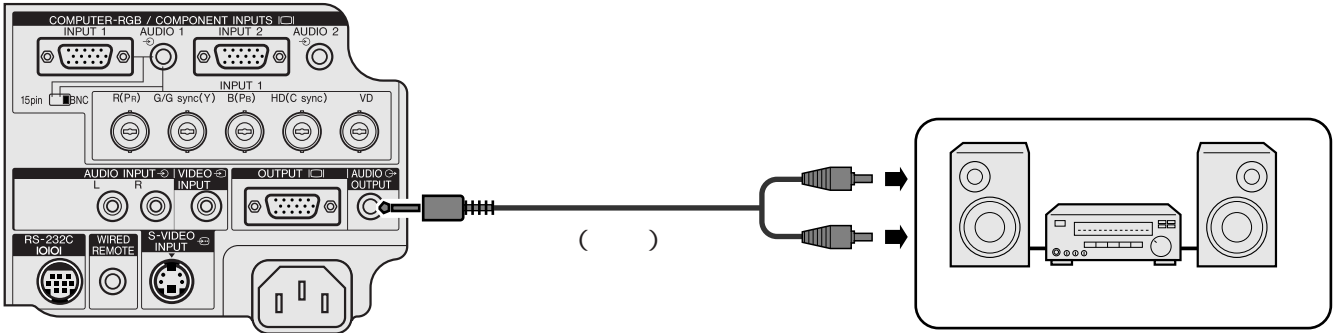
*DTV



주의

OFF

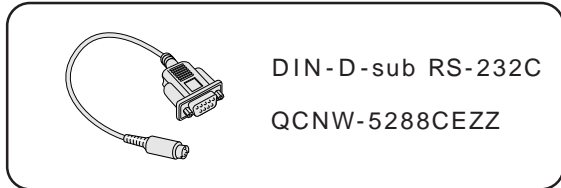
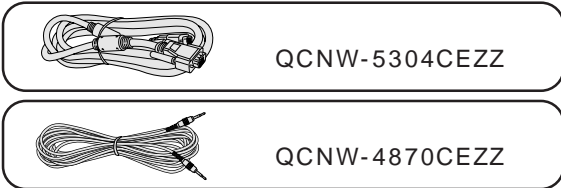
주



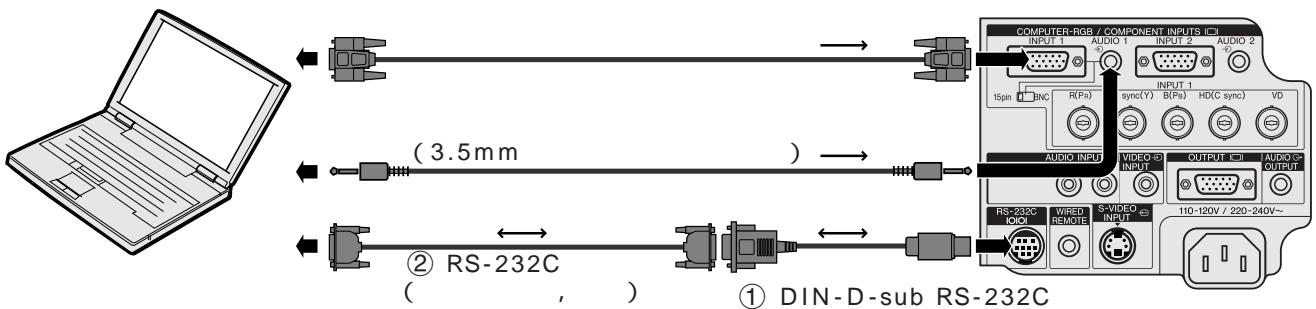
RS-232C

RS-232C 가 RS-232C (,)

51 52



- ① DIN-D-sub RS-232C RS-232C
- ② RS-232C () DIN-D-sub RS-232C



주의

ON RS-232C

주

가 RS-232C

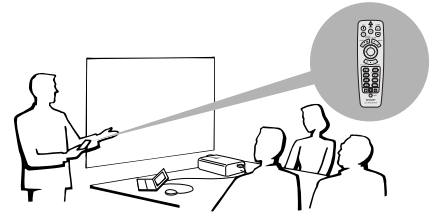
(→, ←)

Macintosh Macintosh

가 LCD

RS-232C RS-232C (,)

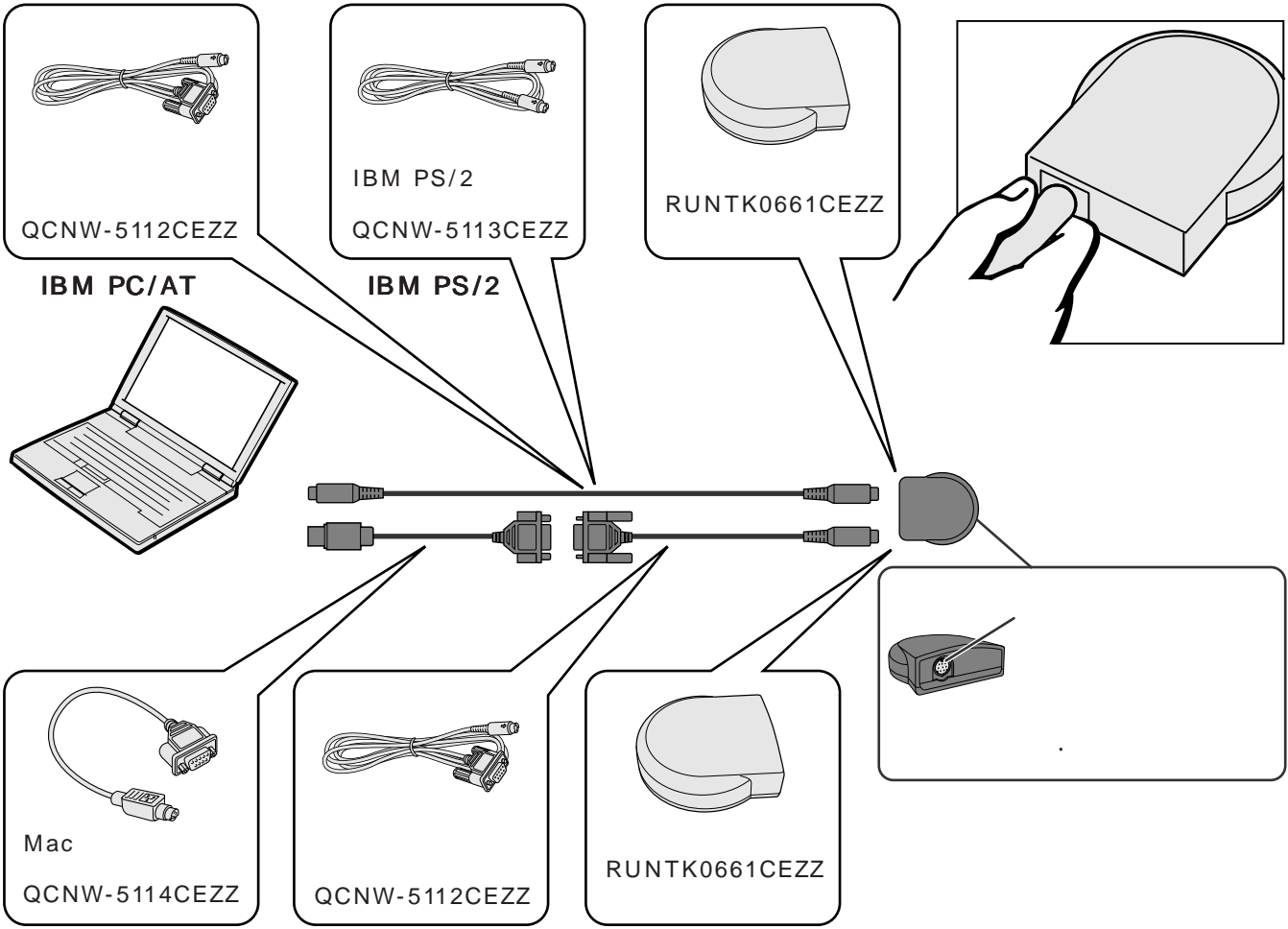
51 52



IBM

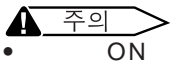
IBM PC

- ①
- ②

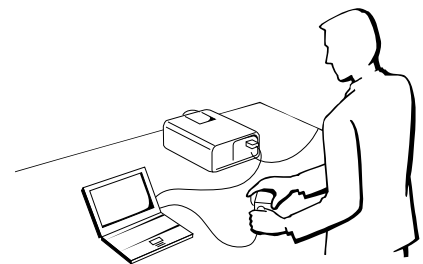


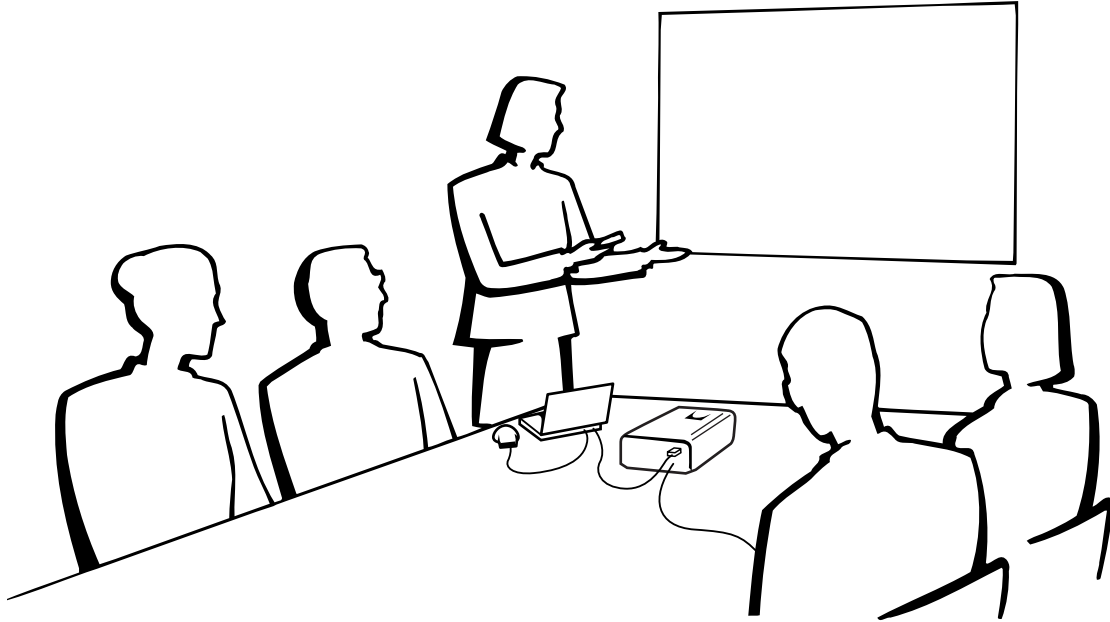
Macintosh

- ①
- ② Macintosh Mac ADB Mac
- ③ Mac



가 IBM PS/2, (RS-232C) ADB



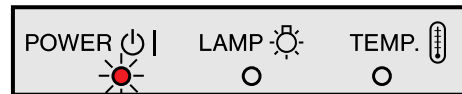


1. ON/OFF

1

주

가



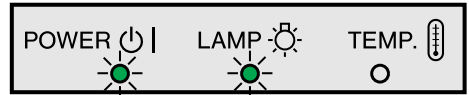
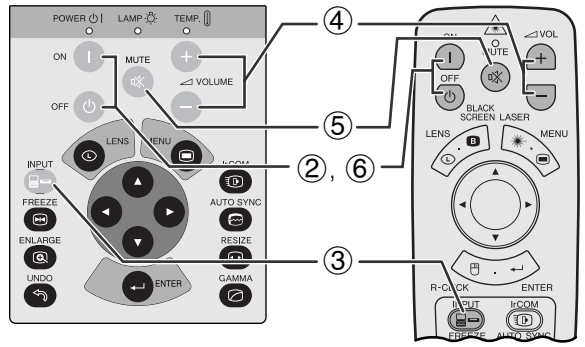
1. ON/OFF

2

ON
1

ON
주

가
가
가

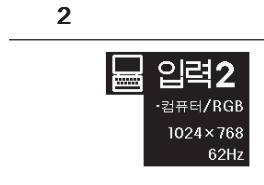


3

INPUT

예

INPUT INPUT



주
가 “ ” 가” 가

4

VOL

+
-

VOLUME +/-



5

MUTE

🔇

MUTE
MUTE



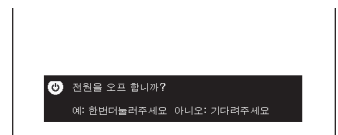
6

OFF

OFF
가

OFF

주
가
OFF
가
ON
가



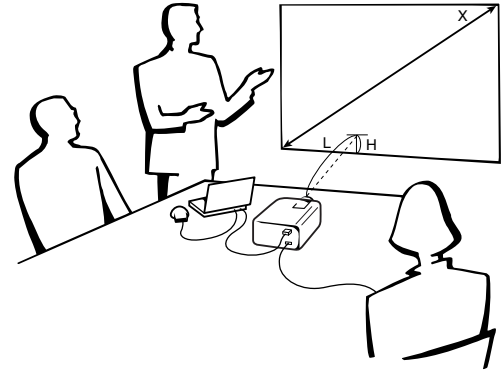
OFF
90

주

()

주

가 . AN-T6EN AN-W6EZ
LCD



(4:3)

(diag.) (X)	(L)		(H)
762 cm (300")	14.3 m	11.0 m	22.9 cm
508 cm (200")	9.8 m	7.4 m	15.2 cm
381 cm (150")	7.2 m	5.6 m	11.4 cm
254 cm (100")	4.9 m	3.7 m	7.6 cm
213 cm (84")	4.0 m	3.1 m	6.4 cm
183 cm (72")	3.4 m	2.6 m	5.5 cm
152 cm (60")	2.9 m	2.2 m	4.6 cm
102 cm (40")	1.9 m	1.4 m	3.1 cm

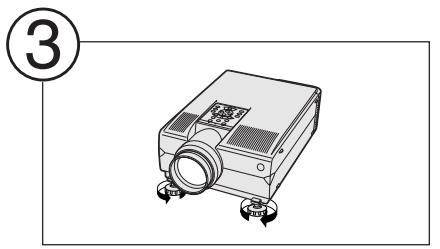
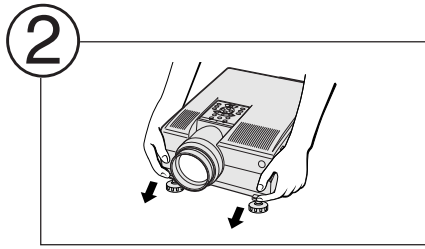
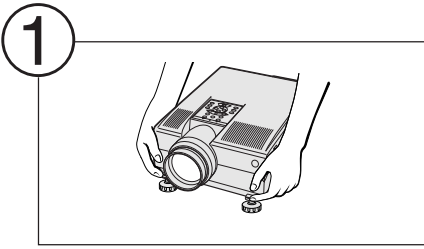
(16:9)

(diag.) (X)	(L)		(H)
762 cm (300")	15.6 m	12.0 m	- 37.4 cm
508 cm (200")	10.5 m	8.1 m	- 24.9 cm
381 cm (150")	7.9 m	6.1 m	- 18.7 cm
338 cm (133")	7.0 m	5.4 m	- 16.6 cm
269 cm (106")	5.6 m	4.3 m	- 13.2 cm
254 cm (100")	5.2 m	4.0 m	- 12.5 cm
234 cm (92")	4.8 m	3.7 m	- 11.5 cm
213 cm (84")	4.3 m	3.3 m	- 10.5 cm
183 cm (72")	3.7 m	2.8 m	- 9.0 cm
152 cm (60")	3.1 m	2.4 m	- 7.5 cm
102 cm (40")	2.0 m	1.5 m	- 5.0 cm

주



2.



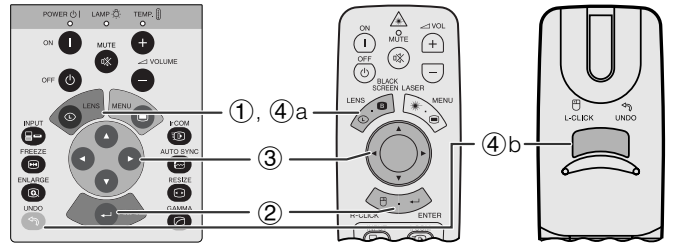
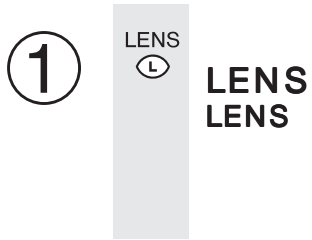
주

5

()

주의

가



ENTER

ENTER



LENS

a.

LENS

UNDO

b.

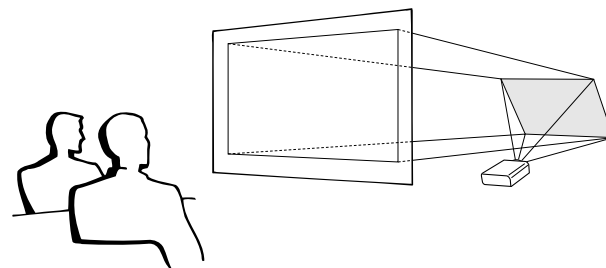
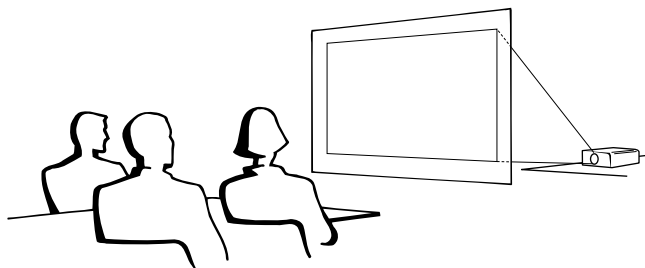
UNDO

주

가

-
-
- ()
- 42
- ()

- ()
-
- ()
- 42
- ()
- 가



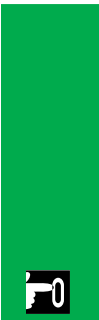
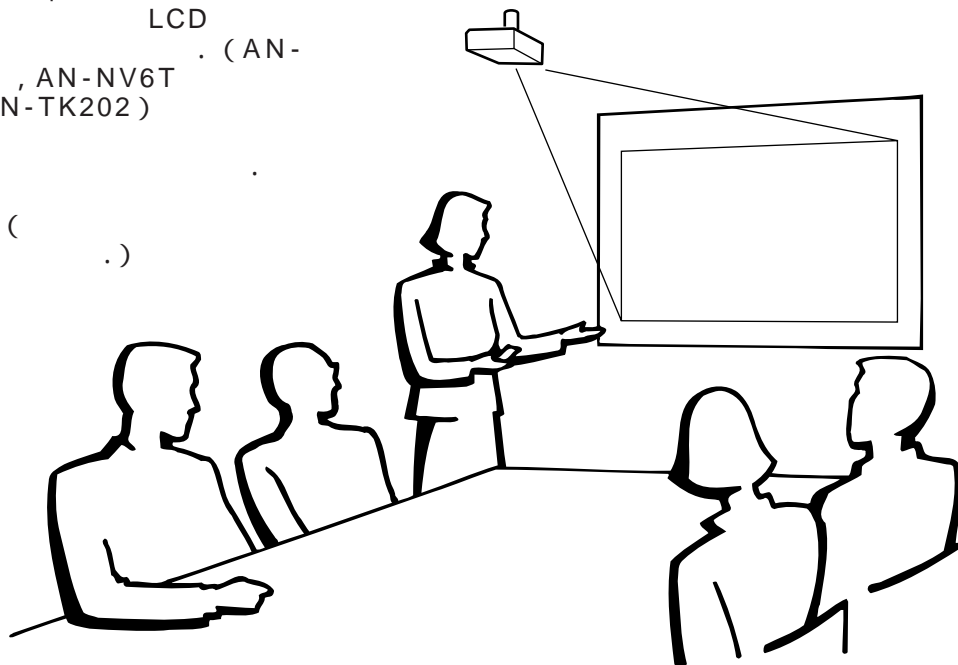
주

- 가

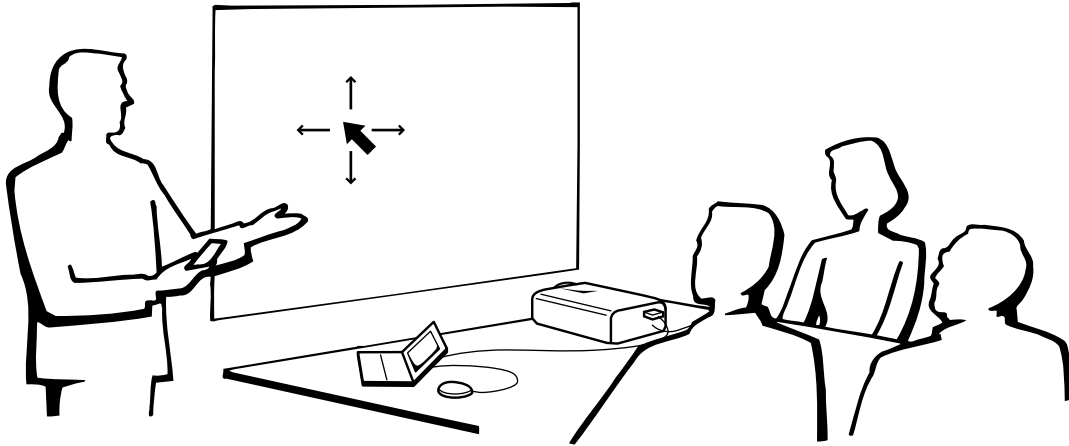
주의

-

-
- 가 LCD () (AN- NV6T , AN-NV6T AN-TK201/AN-TK202)
- 가
-
- 42 ()

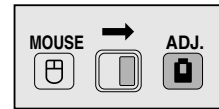
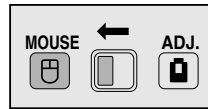


3.



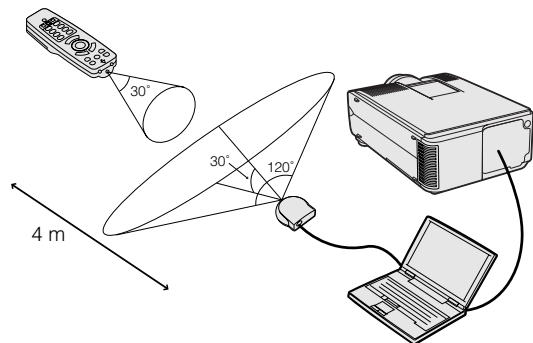
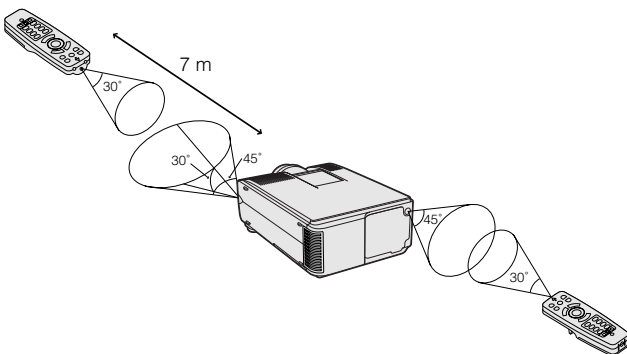
가

MOUSE/ADJ.
()



/

주



가

1 MOUSE/ADJ. MOUSE

주

- 가
- L-CLICK R-CLICK

LIGHT LIGHT

	MOUSE/ADJ.	
	MOUSE () ← →	ADJ. ()
LASER/MENU	LASER ()	MENU ()
BLACK SCREEN/LENS	BLACK SCREEN ()	LENS ()
R-CLICK/ENTER	R-CLICK ()	ENTER ()
/	()	()
L-CLICK/UNDO	L-CLICK ()	UNDO ()
ON/OFF	ON ()	
VOL +/-		
MUTE		

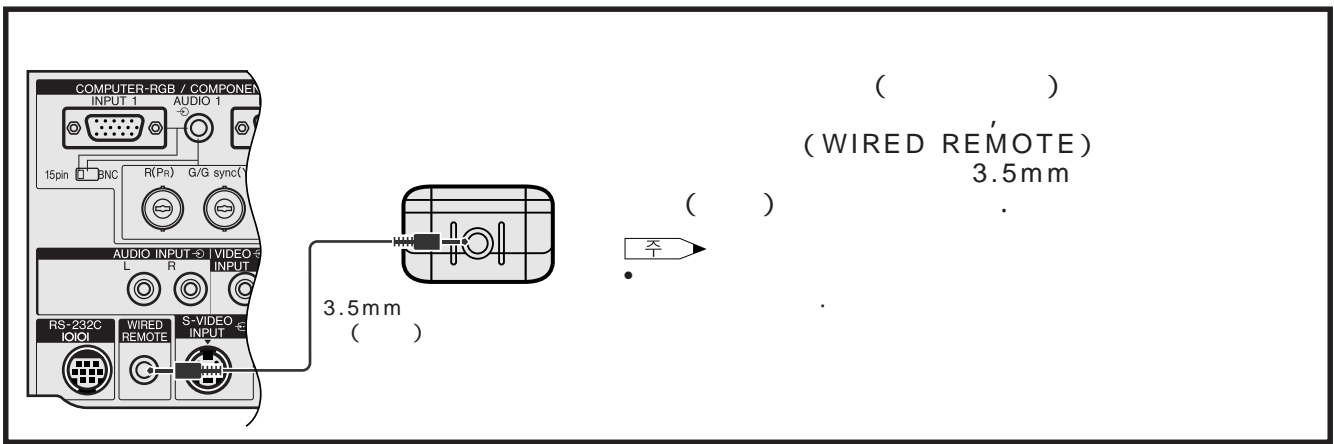
	MOUSE/ADJ.	
	MOUSE () ← →	ADJ. ()
INPUT		
IrCOM		
FREEZE		
AUTO SYNC		ON ()
ENLARGE		
RESIZE		
TOOLS		
GAMMA		

1 MOUSE/ADJ. MOUSE

2 LASER LASER () OFF

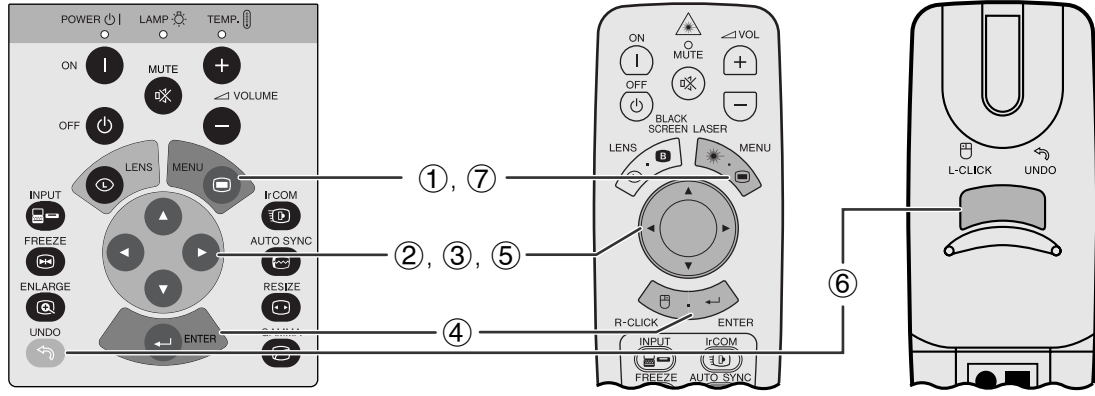
주

- 1 LASER () OFF가 ON





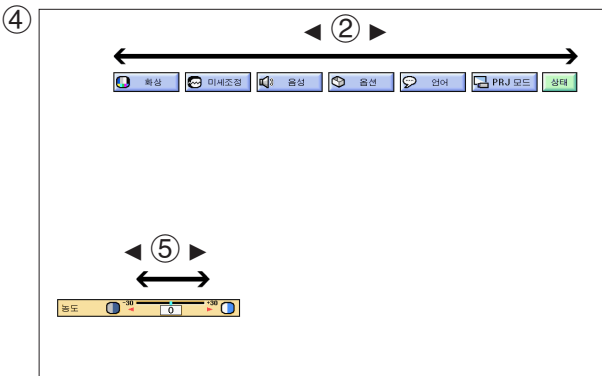
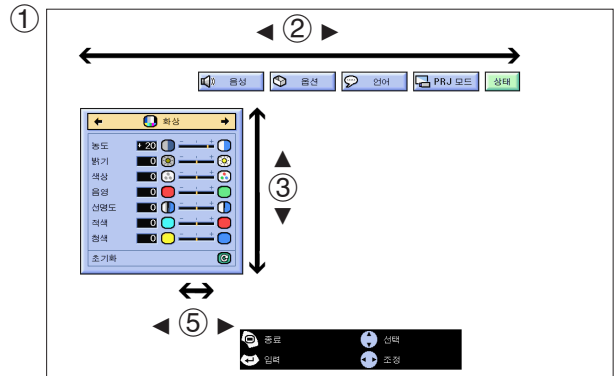
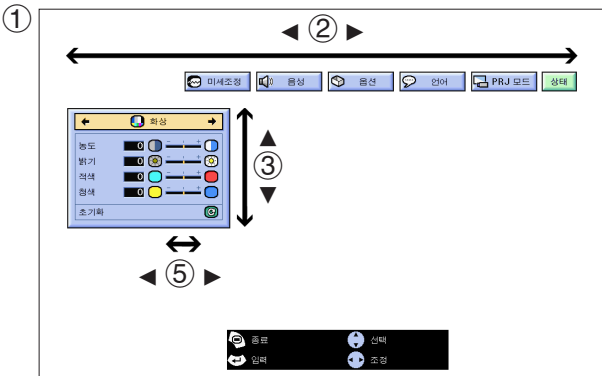
GUI (Graphical User Interface)



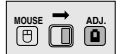
2 (/)

(GUI)

(/ RGB)



(ADJ. MOUSE/ADJ.)



① MENU

② </>

③ ▲ / ▼

④ ENTER

⑤ </>

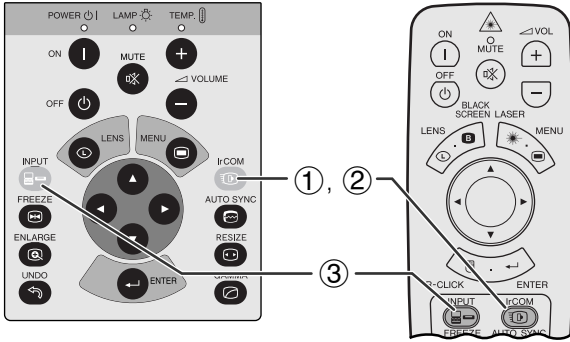
⑥ 가 UNDO

⑦ MENU GUI



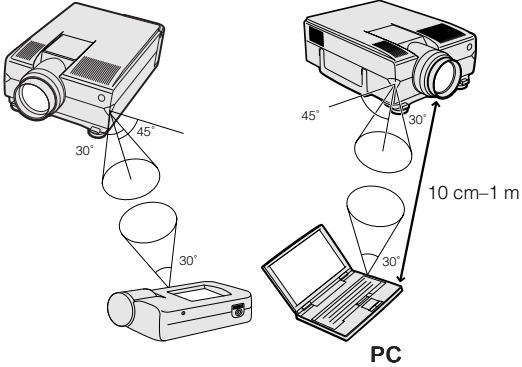


IrCOM



IrCOM 1

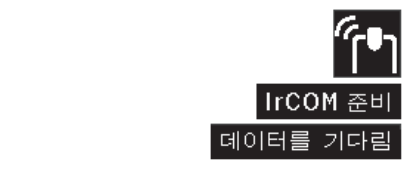
IrCOM 2



①



②



IrCOM ()

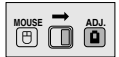
- IrCOM 가 CD-ROM SAPS (SAPS)
- IrCOM



- IrCOM
- 가
- IrCOM
- 10cm

10cm 1m

(ADJ. MOUSE/ADJ.)



① IrCOM 가 IrCOM
가 "Ir-COM1" "Ir-COM2"

②



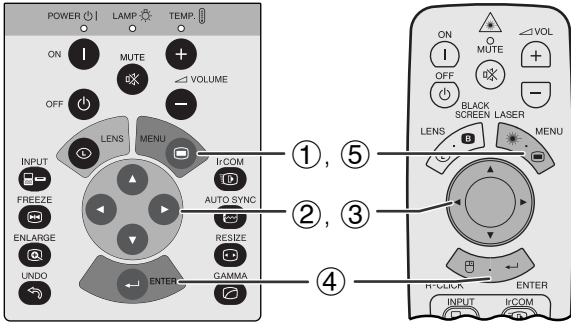
• IrCOM 가

③ IrCOM

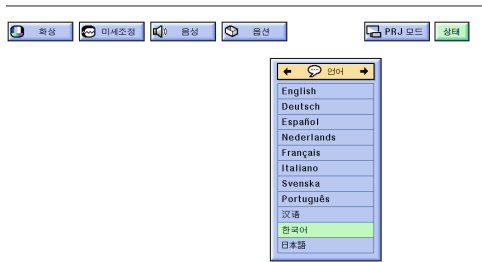
INPUT



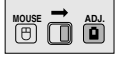
• 가 IrCOM



(GUI)



(MOUSE/ADJ. ADJ.)



① MENU

② ◀/▶

③ ▲/▼

④ ENTER

⑤ MENU

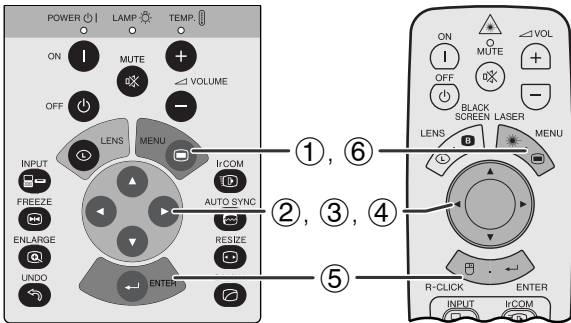
GUI



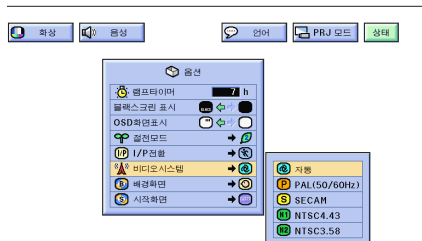
()



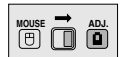
가



(GUI)



(MOUSE/ADJ. ADJ.)



① MENU

② ◀/▶

③ ▲/▼

④ ▶

⑤ ▲/▼

⑤ ENTER

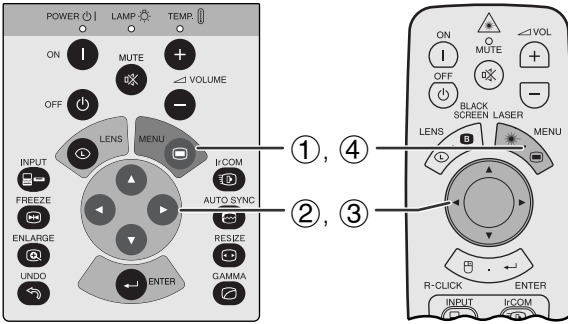
⑥ MENU

GUI



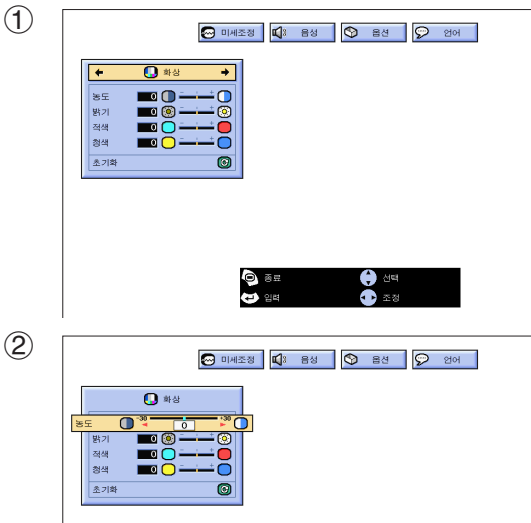
가 가

가

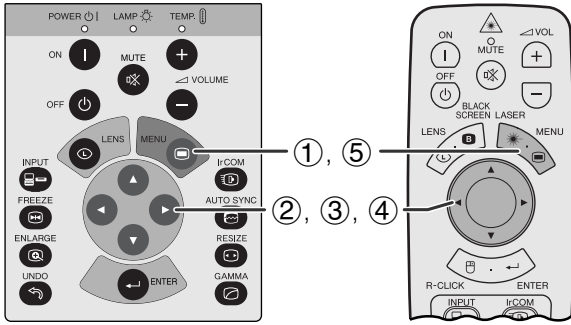


	◀	▶

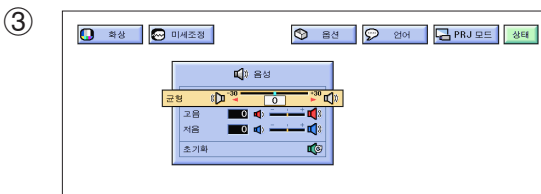
(GUI) / RGB)



- “ ” “ ” “ ” “ ” “ ”
/ RGB
- (MOUSE/ADJ. ADJ.)
- ① MENU “ ” . GUI
- ② ▲ / ▼
- ③ ◀ / ▶
- ④ MENU GUI
- “ ” ENTER “ ”
- “ 1 ”, “ 2 ” “ ” “ ”
- “ ” “ ” DVD 가 가

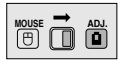


(GUI)



	◀	▶
	가	가

(ADJ. MOUSE/ADJ.)



① MENU

. GUI

② ◀/▶

“ ”

③ ▲/▼

④ ◀/▶

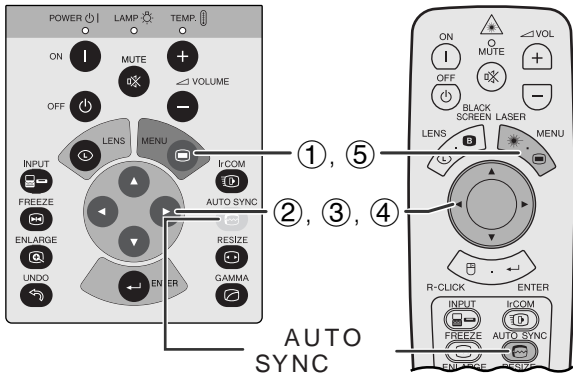
⑤ MENU

GUI

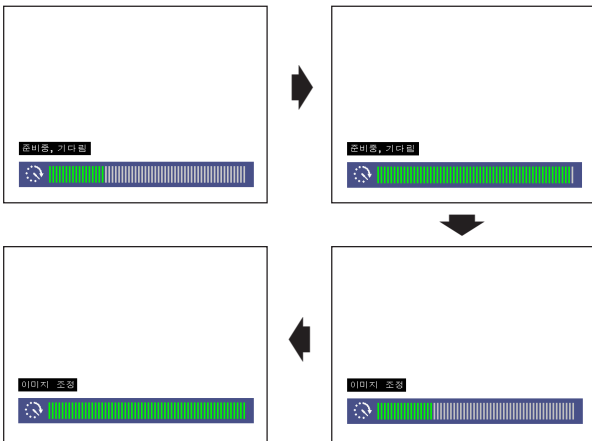
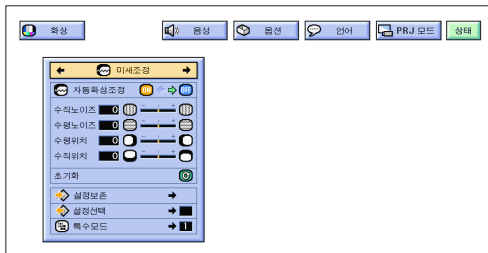
주

ENTER





(GUI)



(GUI)

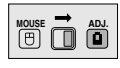


AUTO SYNC

GUI

- “ ” “ ON ”
- “ ” “ ON ” 가
- “ ” “ ON ” 가
- “ ” “ ON ” 가
- “ ” “ ON ” 가

(ADJ. MOUSE/ADJ.)

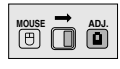


- ① MENU
- ② ◀/▶
- ③ ▲/▼
- ④ ◀/▶ “ ON ”
- ⑤ MENU GUI

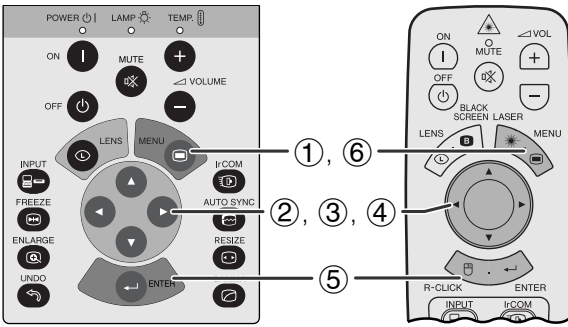
- 주 → AUTO SYNC 가
- “ ” 가 가
- “ ” 가 가
- “ ” 가 가
- “ ” 가 가

주 →

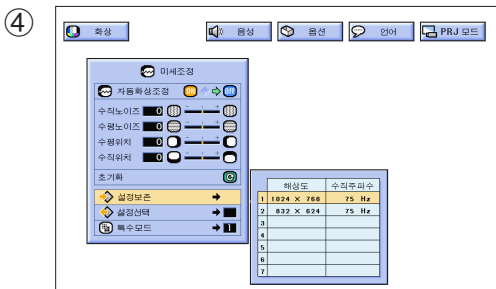
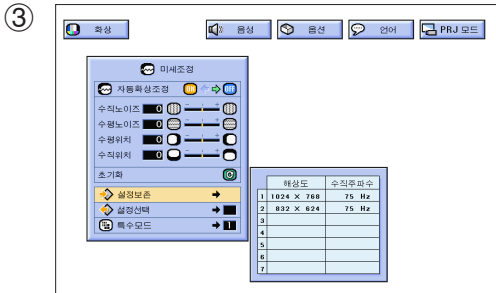
(ADJ. MOUSE/ADJ.)



- ① MENU
- ② ◀/▶
- ③ ▲/▼
- ④ ◀/▶ “ ”
- ⑤ MENU GUI



(GUI)



7가

(ADJ. MOUSE/ADJ.)



① MENU

② ◀/▶ “ ”

③ ▲/▼ “ ” ▶

④ ▲/▼

⑤ ENTER

⑥ MENU GUI

(ADJ. MOUSE/ADJ.)



① MENU

② ◀/▶ “ ”

③ ▲/▼ “ ” ▶

④ ▲/▼

⑤ ENTER

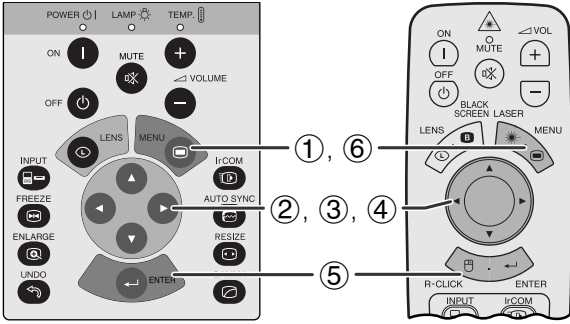
⑥ MENU GUI



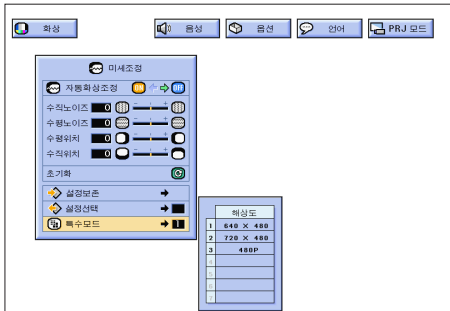
• 가

가

• “ ”



(GUI)



가 “ ” “ ” 가

(ADJ. MOUSE/ADJ.)



① MENU

② ◀/▶

③ ▲/▼

④ ▲/▼

⑤ ENTER

⑥ MENU

GUI

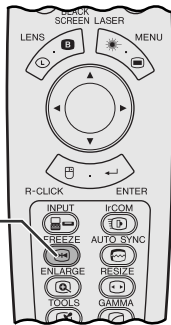
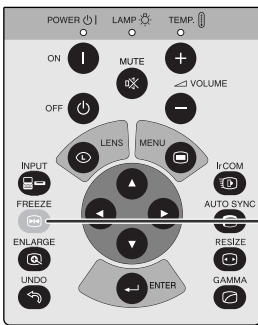
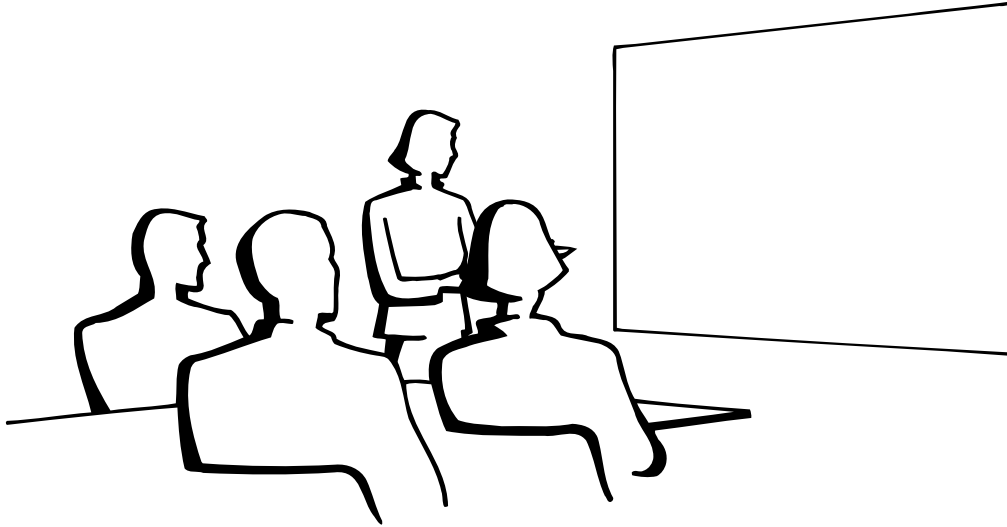
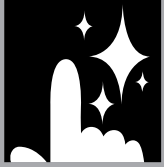


• () ()

• DTV 480P “480P”

④



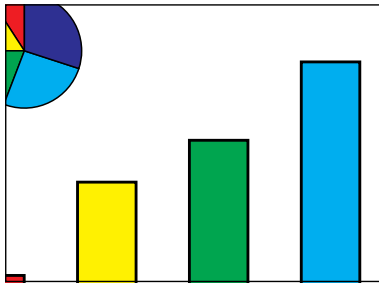
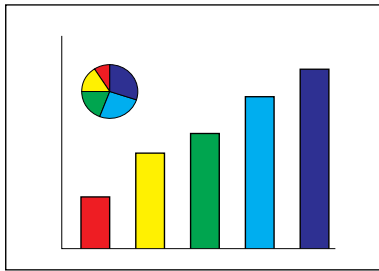
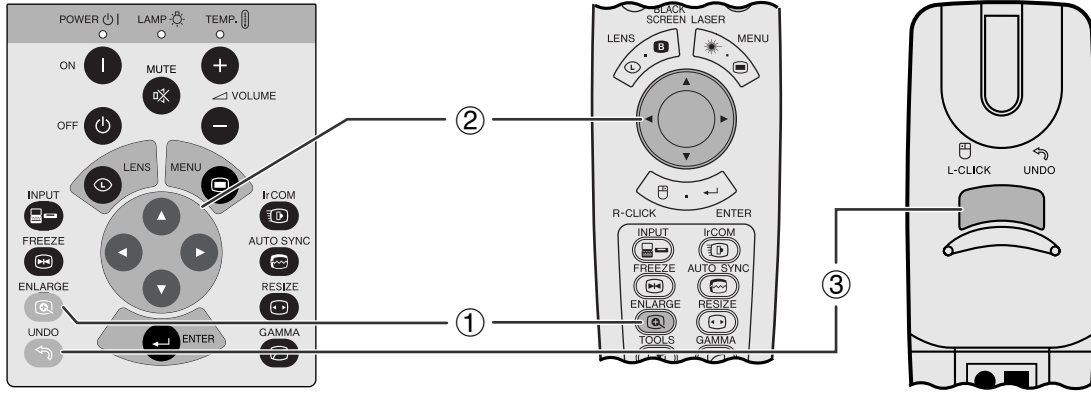


①, ②

① FREEZE

② FREEZE





(MOUSE/ADJ.
ADJ. .)



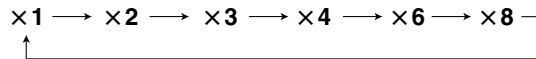
① ENLARGE

ENLARGE

②



• ENLARGE



•

× 1

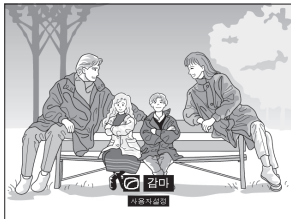
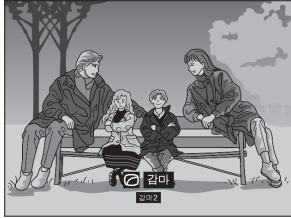
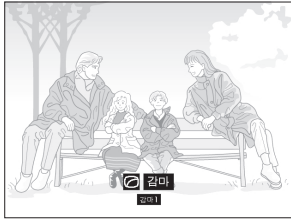
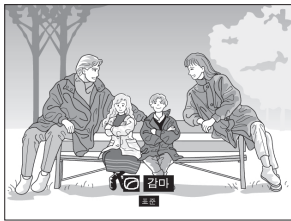
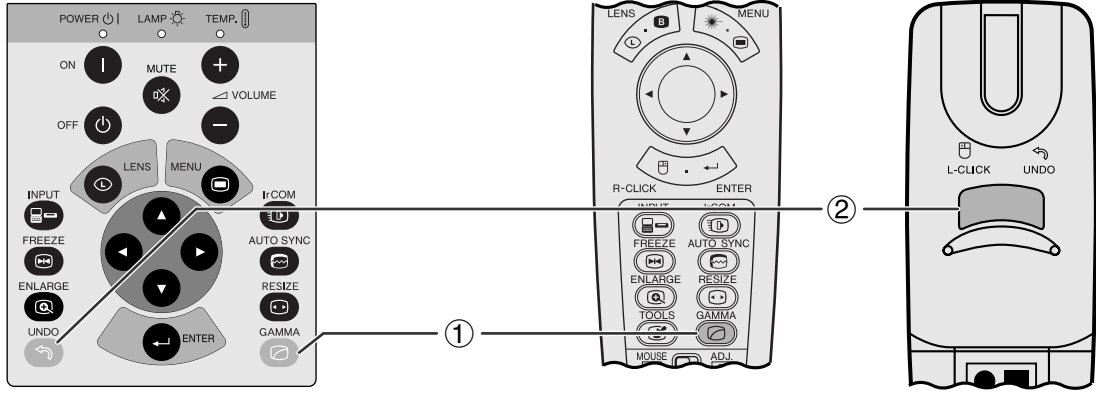
가

(a) INPUT

(b) 가

(c)

③ × 1 가 UNDO



1

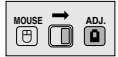
2



-
- 4가
- 가

1	
2	

(ADJ. MOUSE/ADJ.)



① GAMMA . GAMMA

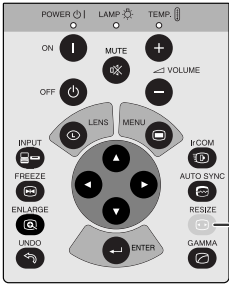
② 가 “ ” 가
UNDO



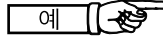
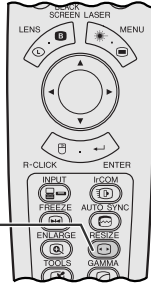
() ,



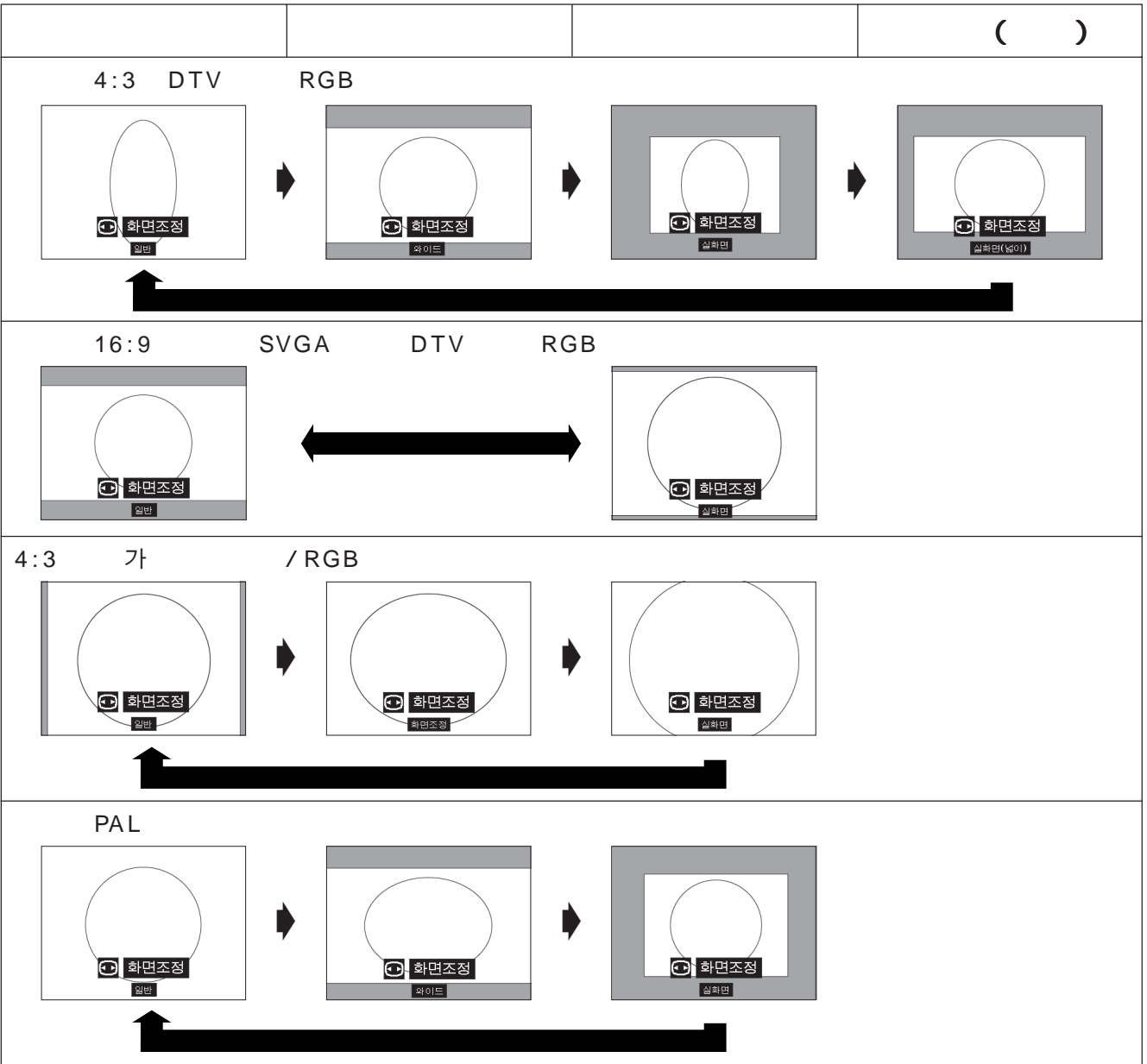
• RESIZE



RESIZE



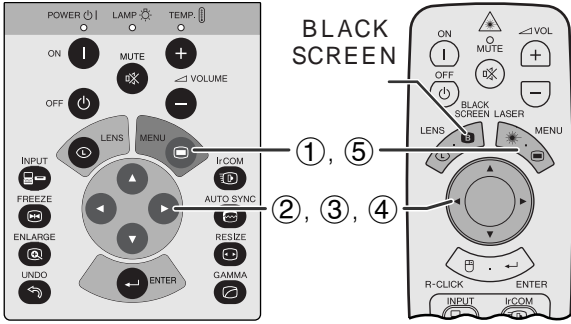
	DTV			
	4:3	16:9	SXGA	PAL
	480 P	720 P		
	1024 × 768	1024 × 576	960 × 768	1024 × 768
	1024 × 576	—	1024 × 768	1024 × 576
	640 × 480	1280 × 720	1280 × 1024	720 × 540
()	853 × 480	—	—	—



- “ 4:3 가 SXGA 가
-
- 가 “ ”

LCD

UNDO

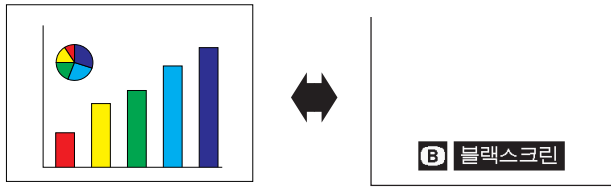


BLACK SCREEN

BLACK SCREEN
BLACK SCREEN



BLACK SCREEN
MOUSE/ADJ. MOUSE



(GUI)



GUI
MOUSE/ADJ.
ADJ.



① MENU

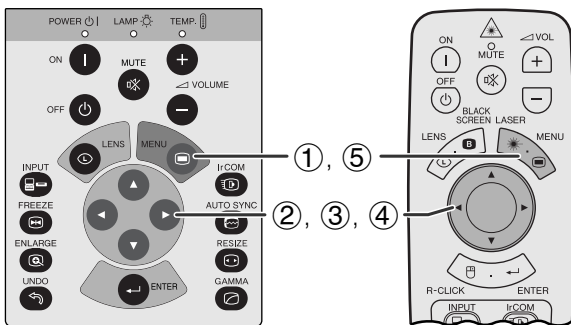
② ◀▶

③ ▲▼

④

⑤ MENU

GUI

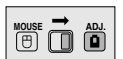


(GUI)



INPUT IrCOM
OSD IrCOM
GUI

MOUSE/ADJ.
ADJ.



① MENU

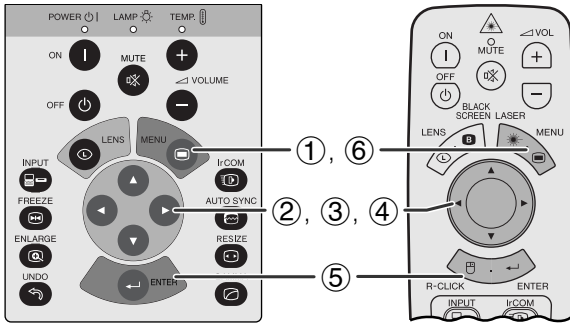
② ◀▶

③ ▲▼

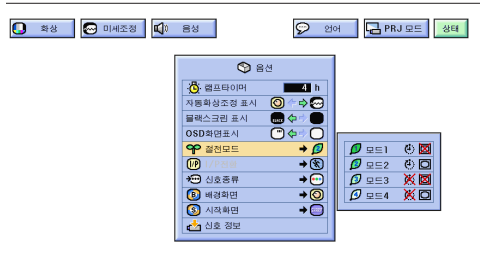
④

⑤ MENU

GUI



(GUI)

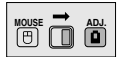


가 OFF

		RS232C /
1	ON	OFF
2	ON	ON
3	OFF	OFF
4	OFF	ON



2
(ADJ. MOUSE/ADJ.)



① MENU

② ◀/▶

③ ▲/▼

④ ▲/▼

⑤ ENTER

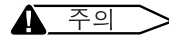
⑥ MENU

GUI

가 15

5

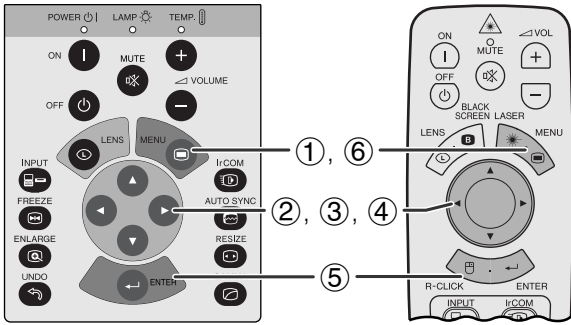
가



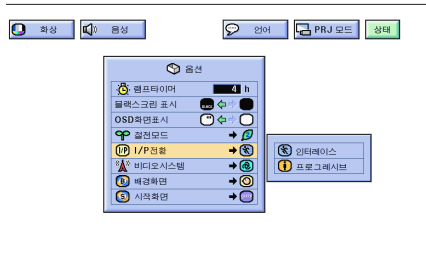
2

4

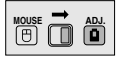
()



(GUI)



(ADJ. MOUSE/ADJ.)



① MENU

② ◀/▶

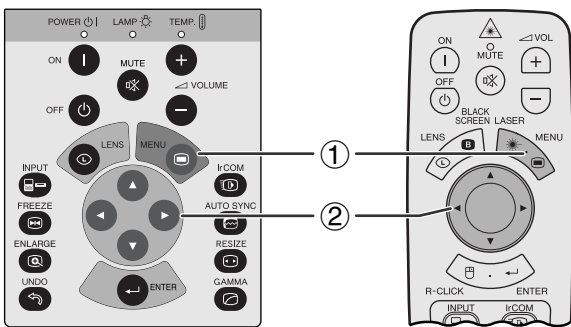
③ ▲/▼

④ ▲/▼

⑤ ENTER

⑥ MENU

GUI



(GUI)



(ADJ. MOUSE/ADJ.)



① MENU

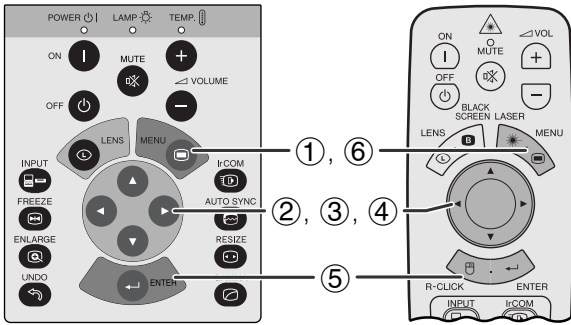
② ◀/▶



2,000

가

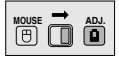
LCD



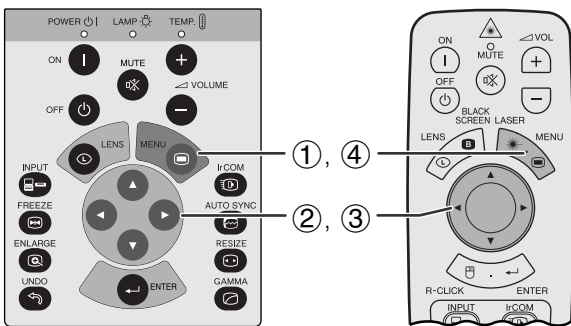
(GUI)



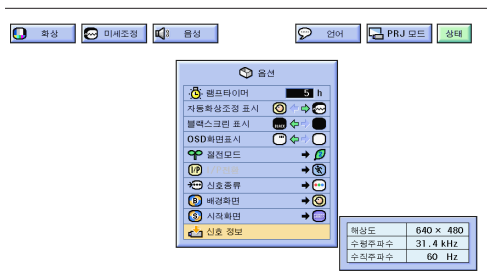
(ADJ. MOUSE/ADJ.)



- ① MENU
- ② ◀/▶ “ ”
- ③ ▲/▼ “ ” ▶
- ④ ▲/▼ “ /RGB ” “
- ⑤ ENTER
- ⑥ MENU GUI



(GUI)



(ADJ. MOUSE/ADJ.)

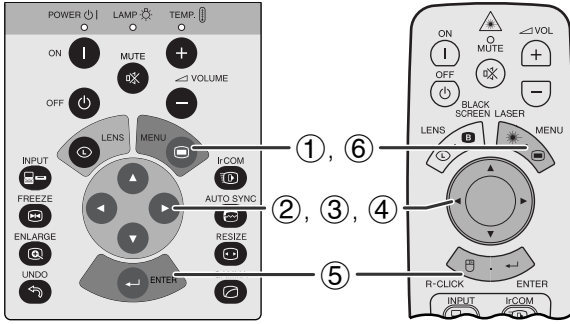


- ① MENU
- ② ◀/▶ “ ”
- ③ ▲/▼ “ ”
- ④ MENU GUI

주 →



가

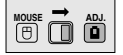


(GUI)



	가 (:)

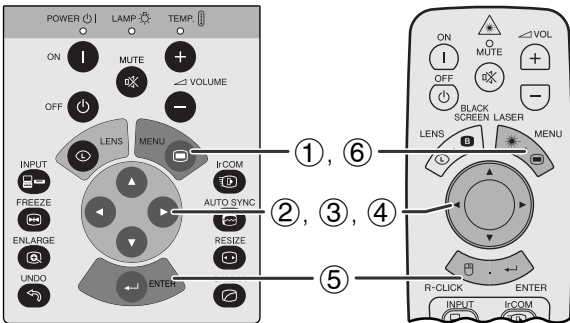
(ADJ. MOUSE/ADJ.)



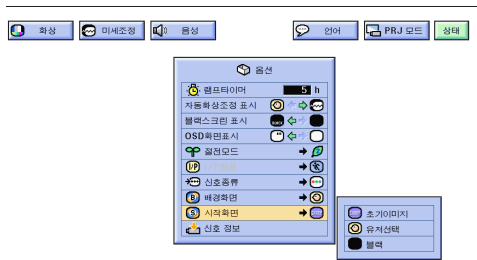
- ① MENU
- ② ◀/▶
- ③ ▲/▼
- ④ ▲/▼
- ⑤ ENTER
- ⑥ MENU



“ ” 가
 (:)
 256 BMP 1,024 × 768
 ()



(GUI)

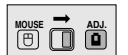


• IrCOM (:)

14 25

	가 (:)

(ADJ. MOUSE/ADJ.)



- ① MENU
- ② ◀/▶
- ③ ▲/▼
- ④ ▲/▼
- ⑤ ENTER
- ⑥ MENU

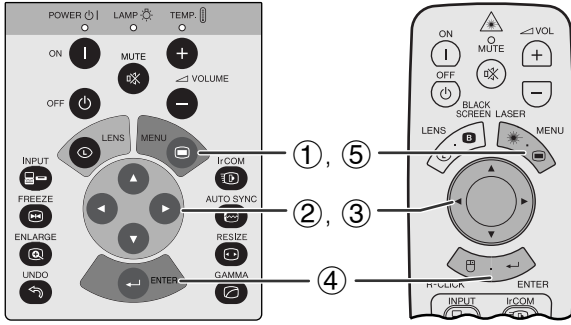


“ ” 가
 (:)
 256 BMP 1,024 × 768
 ()



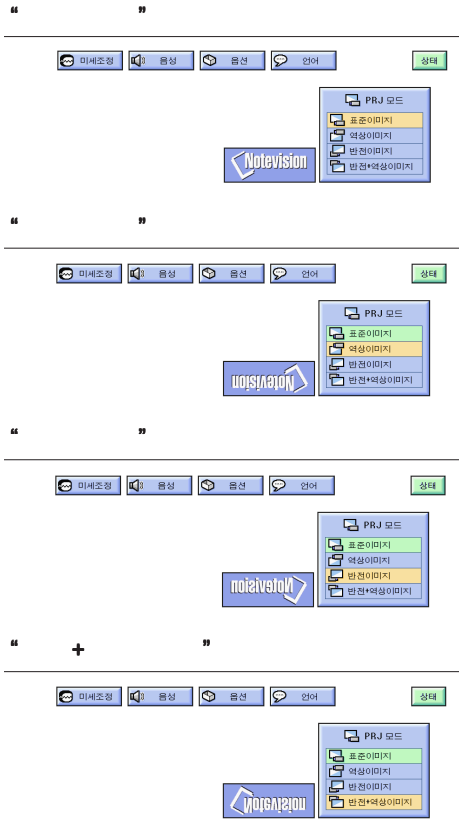
/

/

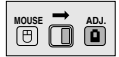


	+
+	+

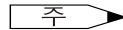
(GUI)



(ADJ. MOUSE/ADJ.)

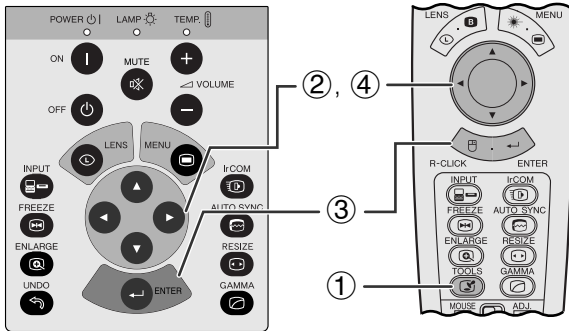
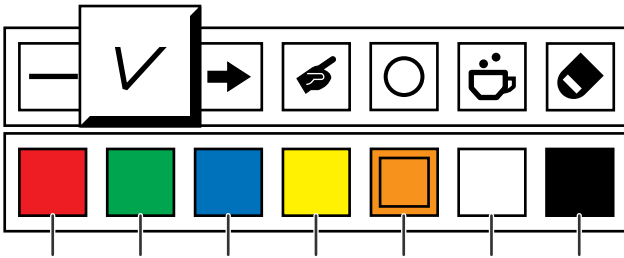
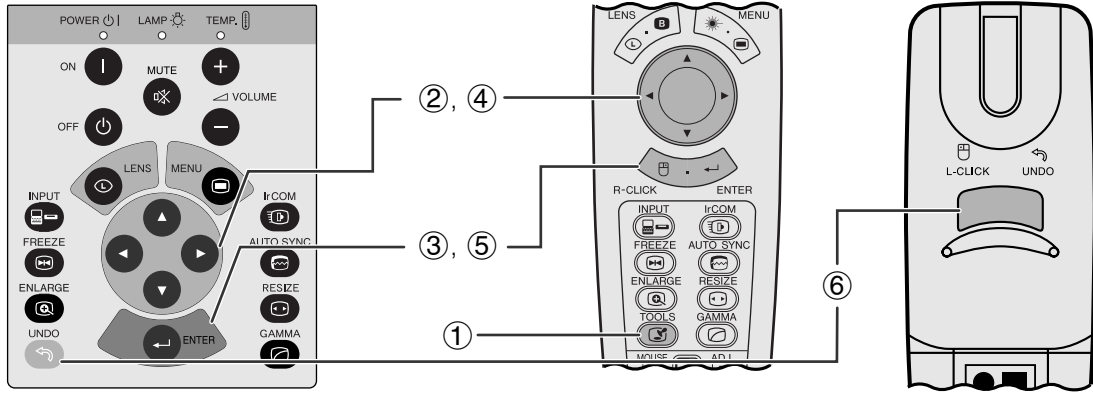


- ① MENU
- ② ◀/▶ “ PRJ ”
- ③ ▲/▼
- ④ ENTER
- ⑤ MENU GUI

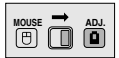


20





(ADJ. MOUSE/ADJ.)



① TOOLS

② ▲/▼/◀/▶

③ ENTER

④ ▲/▼/◀/▶

⑤ ENTER

⑥ UNDO

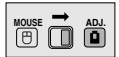


“☑”

ENTER



(ADJ. MOUSE/ADJ.)



① TOOLS

② ▲/▼/◀/▶

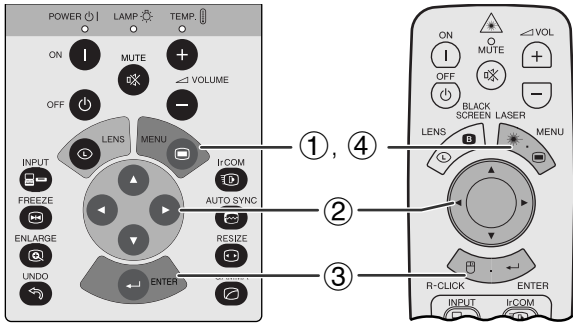


③ ENTER

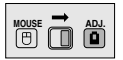
④ ▼ ▲



(42)



(ADJ. MOUSE/ADJ.)



① MENU

② ◀▶

③ ENTER

④ MENU

GUI

(GUI)

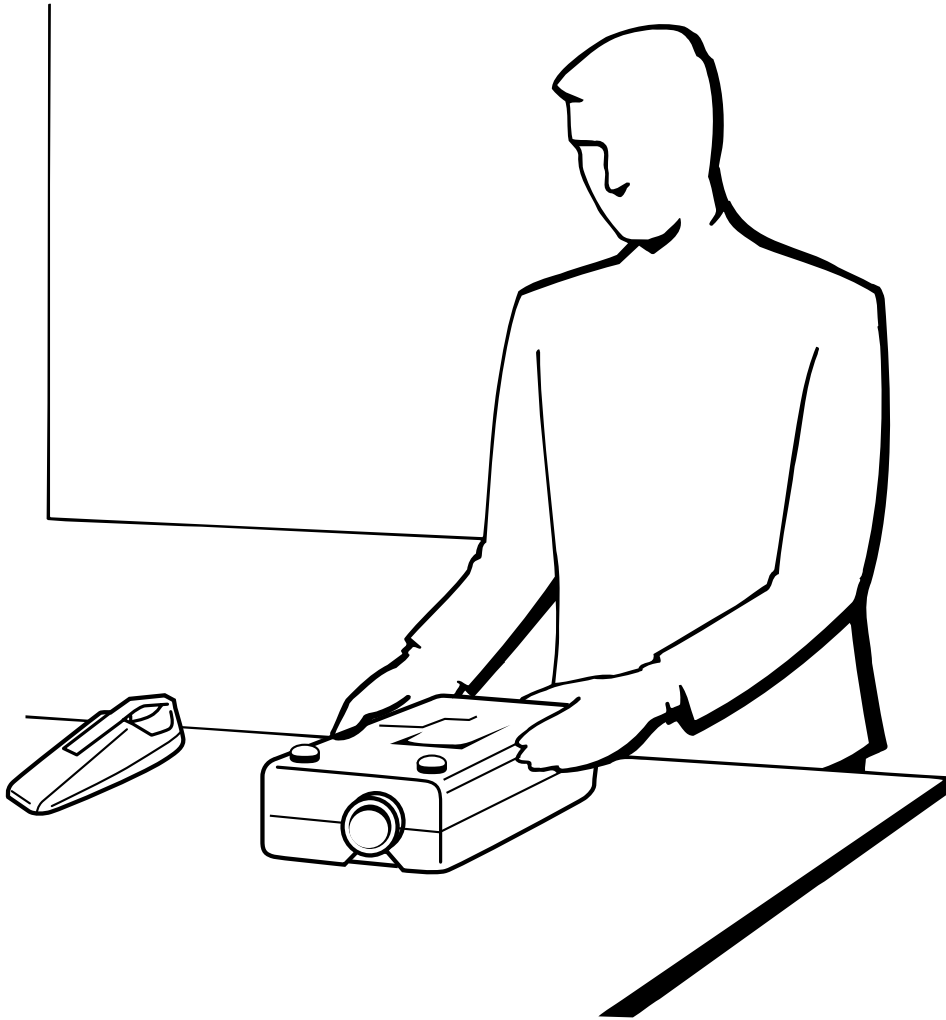
②



③

화상	미세조정	음성	음선
농도	자동화상조정	균형	자동화상조정 표시
밝기	수직노이즈	조음	블랙스크린 표시
적색	수평노이즈	저음	OSD화면표시
청색	수평위치	중전모드	사용자설정
	수직위치	I/P 전환	일반
	설정선택	신호종류	화면조정
특수모드	시각확인	배경화면	





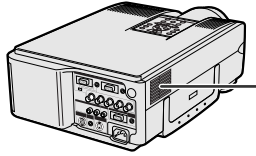
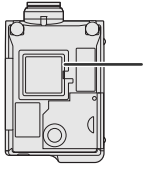


100

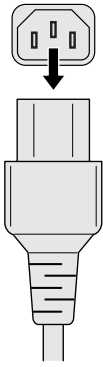
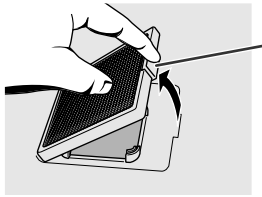
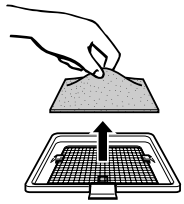
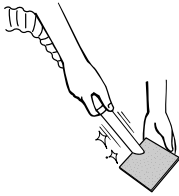
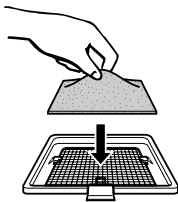
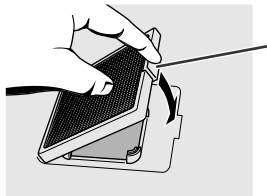
가

가 가

(PFILD0080CEZZ)



(가)

1	2	3
		<p>가</p> 
4	5	6
		

주

가

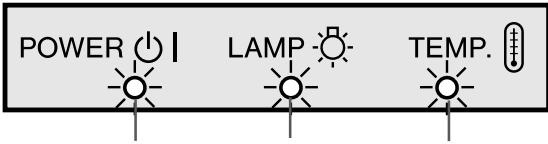
(가) 가

주





/



- 가
- 2 가
- 가

			가
	가	가	가 가
		가	(46)
			LCD 가 가
	가	가	LCD 가 가
	가 ON	가	

주

- 5) ON/OFF 가 가

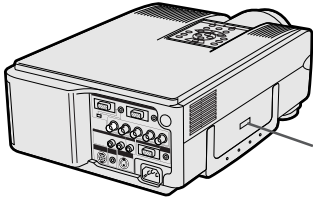
LCD (39) 가 2,000 1,900

주의

주

- 2,000

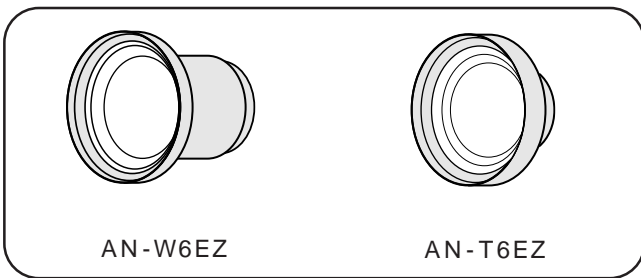
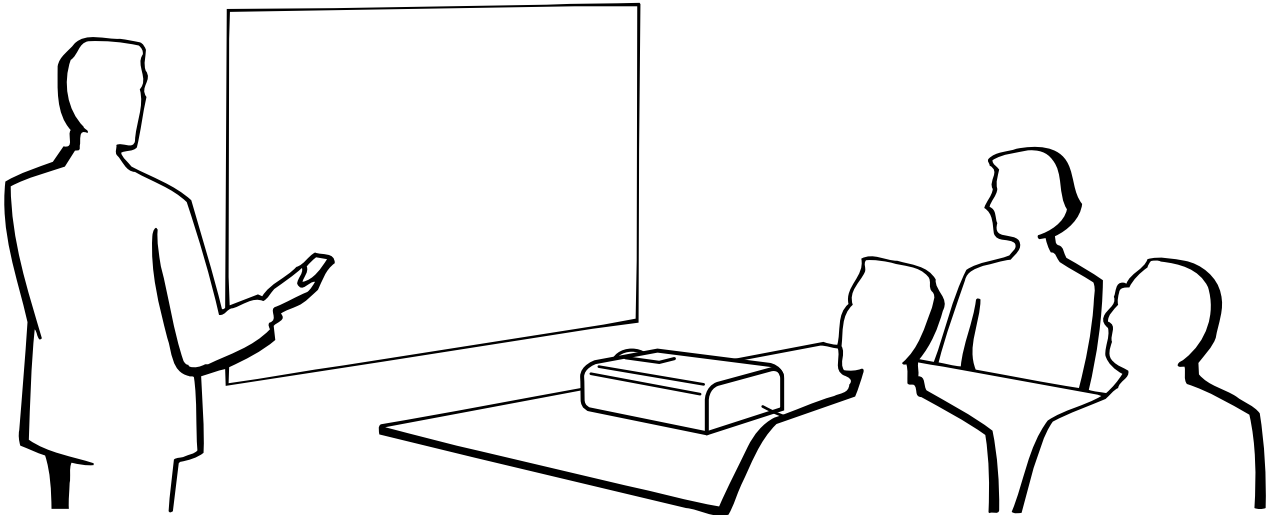




A/S

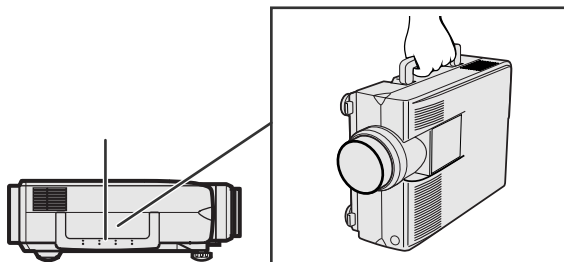
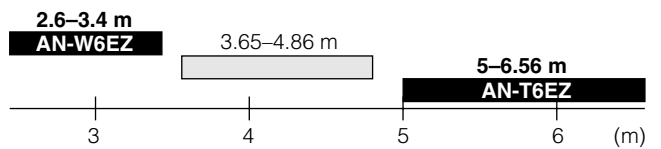
가	<ul style="list-style-type: none"> 가 가 (17) (11—15) 가 (8) MOUSE/ADJ. 가 MOUSE
	<ul style="list-style-type: none"> (11—15) (27) (“ ”) (37)
	<ul style="list-style-type: none"> (“ ” “ ”) (27)
	<ul style="list-style-type: none"> (19) 가 가 (18))
가	<ul style="list-style-type: none"> (11—15) (17)
가 가	<ul style="list-style-type: none"> 가 가
	<ul style="list-style-type: none"> 47 “ / ”
IrCOM	<ul style="list-style-type: none"> (25) “ A/S ”
가	<ul style="list-style-type: none"> (29) 가 RS-232C ON (51—52)
480P	<ul style="list-style-type: none"> 480P (32)
) (<ul style="list-style-type: none"> (40)
가	<ul style="list-style-type: none"> ,





AN-T6EZ LCD . AN-W6EN
()

254 cm (100")



⚠ 주의

가

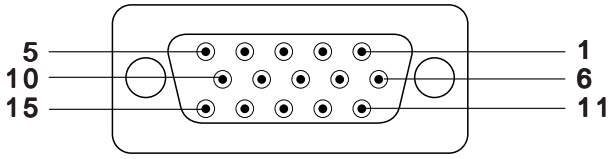
•

•



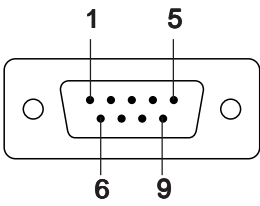


1 2 : 15 D-sub



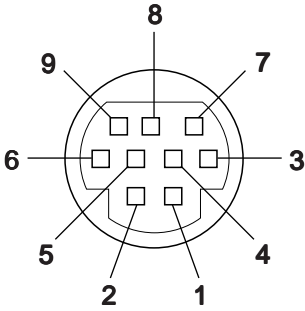
- | | | | |
|----|-------|-----|----------------|
| 1. | () | 8. | () |
| 2. | (/) | 9. | |
| 3. | () | 10. | GND |
| 4. | 1 | 11. | GND |
| 5. | | 12. | Bi-directional |
| 6. | () | 13. | |
| 7. | (/) | 14. | |
| |) | 15. | |

RS-232C : DIN-D-sub RS-232C 9 D-sub male



- | | |
|---|----|
| 1 | CD |
| 2 | RD |
| 3 | SD |
| 4 | ER |
| 5 | SG |
| 6 | DR |
| 7 | RS |
| 8 | CS |
| 9 | CI |

RS-232C : 9 DIN



- | | | |
|---|------|-----------|
| 1 | VCC | +3.3V () |
| 2 | RD | |
| 3 | SD | |
| 4 | EXIR | () |
| 5 | SG | |
| 6 | ERX | IR () |
| 7 | RS | IR () |
| 8 | CS | |
| 9 | ETX | IR () |





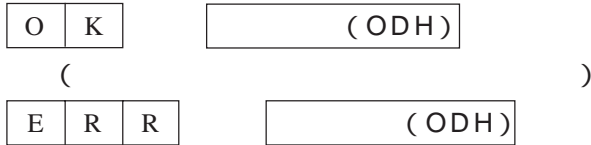
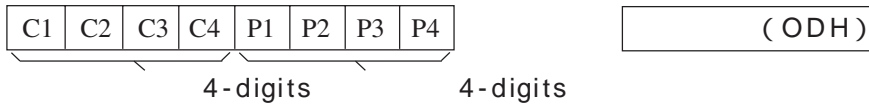
RS-232C

PC

RS-232C (,) . ()
14)

: RS-232C
: 9,600 bps
: 8 bits
:
: 1 bit
:

: , , , 가



OK

주

가

예

• -10 1 “ ”

R A B R _ _ 1 0 ↵

O K ↵

	C1	C2	C3	C4	P1	P2	P3	P4	
OFF	A	P	O	W	_	_	_	0	OFF
	A	P	O	W	_	_	_	1	ON
	P	O	W	R	_	_	_	0	OFF()
	P	O	W	R	_	_	_	1	ON
	I	V	E	D	_	_	_	1	
	I	R	G	B	_	_	_	1	1
	I	R	G	B	_	_	_	2	2
	I	C	O	M	_	_	_	1	IrCOM1
	I	C	O	M	_	_	_	2	IrCOM2
	I	C	H	K	_	_	_	0	
	L	N	F	O	_	*	*	*	(-30 ~ +30)
	L	N	Z	O	_	*	*	*	(-30 ~ +30)
	K	E	Y	S	*	*	*	*	(-127 ~ +127)

	C1	C2	C3	C4	P1	P2	P3	P4	
	M	E	L	A	_	_	_	1	ENGLISH
	M	E	L	A	_	_	_	2	DEUTSCH
	M	E	L	A	_	_	_	3	ESPAÑOL
	M	E	L	A	_	_	_	4	NEDERLANDS
	M	E	L	A	_	_	_	5	FRANÇAIS
	M	E	L	A	_	_	_	6	ITALIANO
	M	E	L	A	_	_	_	7	SVENSKA
	M	E	L	A	_	_	_	8	日本語
	M	E	L	A	_	_	_	9	PORTUGUÉS
	M	E	L	A	_	_	1	0	汉语
	M	E	L	A	_	_	1	1	한국어



	C1	C2	C3	C4	P1	P2	P3	P4	
	M	E	S	Y	-	-	-	1	
	M	E	S	Y	-	-	-	2	PAL (50/60Hz)
	M	E	S	Y	-	-	-	3	SECAM
	M	E	S	Y	-	-	-	4	NTSC 4.43
	M	E	S	Y	-	-	-	5	NTSC 3.58
	V	A	P	I	-	*	*	*	(-30 ~ +30)
	V	A	B	R	-	*	*	*	(-30 ~ +30)
	V	A	C	O	-	*	*	*	(-30 ~ +30)
	V	A	T	I	-	*	*	*	(-30 ~ +30)
	V	A	S	H	-	*	*	*	(-30 ~ +30)
	V	A	R	E	-	-	-	1	
	V	A	R	D	-	*	*	*	(-30 ~ +30)
	V	A	B	E	-	*	*	*	(-30 ~ +30)
	V	A	R	E	-	-	-	0	
	V	A	R	E	-	-	-	1	
	I	M	B	G	-	-	-	1	
	I	M	B	G	-	-	-	2	
	I	M	B	G	-	-	-	3	
	I	M	B	G	-	-	-	4	
	I	M	S	I	-	-	-	1	
	I	M	S	I	-	-	-	2	
	I	M	S	I	-	-	-	3	
	V	O	L	A	-	-	*	*	(00 ~ 60)
	M	U	T	E	-	-	-	0	OFF
	M	U	T	E	-	-	-	1	ON
	A	A	B	L	-	*	*	*	(-30 ~ +30)
	A	A	T	E	-	*	*	*	(-30 ~ +30)
	A	A	B	A	-	*	*	*	(-30 ~ +30)
	A	A	R	E	-	-	-	0	
	A	A	R	E	-	-	-	1	
	R	A	P	I	-	*	*	*	(-30 ~ +30)
	R	A	B	R	-	*	*	*	(-30 ~ +30)
	R	A	R	D	-	*	*	*	(-30 ~ +30)
	R	A	B	E	-	*	*	*	(-30 ~ +30)
1	R	A	R	E	-	-	-	0	1
	R	A	C	O	-	*	*	*	(-30 ~ +30)
	R	A	T	I	-	*	*	*	(-30 ~ +30)
	R	A	S	H	-	*	*	*	(-30 ~ +30)
	R	A	R	E	-	-	-	1	
	R	B	P	I	-	*	*	*	(-30 ~ +30)
	R	B	B	R	-	*	*	*	(-30 ~ +30)
	R	B	R	D	-	*	*	*	(-30 ~ +30)
	R	B	B	E	-	*	*	*	(-30 ~ +30)
2	R	B	R	E	-	-	-	0	2
	R	B	C	O	-	*	*	*	(-30 ~ +30)
	R	B	T	I	-	*	*	*	(-30 ~ +30)
	R	B	S	H	-	*	*	*	(-30 ~ +30)
	R	B	R	E	-	-	-	1	
	A	A	D	J	-	-	-	0	OFF
	A	A	D	J	-	-	-	1	ON
	A	D	J	S	-	-	-	1	

	C1	C2	C3	C4	P1	P2	P3	P4	
	I	N	C	L	*	*	*	*	(-150 ~ +150)
	I	N	P	H	-	*	*	*	(-60 ~ +60)
	I	A	H	P	*	*	*	*	(-150 ~ +150)
	I	A	V	P	-	*	*	*	(-60 ~ +60)
	I	A	R	E	-	-	-	0	
	I	A	R	E	-	-	-	1	
	I	M	D	I	-	-	-	0	OSD OFF
	I	M	D	I	-	-	-	1	OSD ON
	I	M	R	E	-	-	-	0	OFF
	I	M	R	E	-	-	-	1	ON
	I	M	I	N	-	-	-	0	OFF
	I	M	I	N	-	-	-	1	ON
	I	M	A	S	-	-	-	0	OFF
	I	M	A	S	-	-	-	1	ON
	I	M	I	P	-	-	-	0	I/P
	I	M	I	P	-	-	-	1	I/P
1	I	A	S	I	-	-	-	1	RGB
	I	A	S	I	-	-	-	2	
2	I	B	S	I	-	-	-	1	RGB
	I	B	S	I	-	-	-	2	
	G	A	M	R	-	-	-	1	
	G	A	M	R	-	-	-	2	1
	G	A	M	R	-	-	-	3	2
	G	A	M	R	-	-	-	4	
	G	A	M	V	-	-	-	1	
	G	A	M	V	-	-	-	2	1
	G	A	M	V	-	-	-	3	2
	G	A	M	V	-	-	-	4	
	S	Y	S	E	-	-	-	0	
	I	M	B	K	-	-	-	0	OFF
	I	M	B	K	-	-	-	1	ON
	I	M	B	O	-	-	-	0	OFF
	I	M	B	O	-	-	-	1	ON
	M	E	M	S	-	-	-	*	(1~7)
	M	E	M	L	-	-	-	*	(1~7)
	R	A	S	R	-	-	-	1	
	R	A	S	R	-	-	-	2	/
	R	A	S	R	-	-	-	3	
	R	A	S	R	-	-	-	4	()
	R	B	S	R	-	-	-	1	
	R	B	S	R	-	-	-	2	/
	R	B	S	R	-	-	-	3	
	R	B	S	R	-	-	-	4	()
	R	A	S	V	-	-	-	1	
	R	A	S	V	-	-	-	2	
	R	A	S	V	-	-	-	3	
	N	F	I	L	-	-	-	0	OFF
	N	F	I	L	-	-	-	1	ON



- () 가
- 가
- 가

- (*) 가
- RS-232C
- ON





- 3.5ø
- : +5 V (1 A)
- : GND

	()	C1	C2	C3	C4	C5	C6	C7	C8	C9	C10	C11	C12	C13	C14	C15
1	ON	1	0	1	1	0	0	1	1	0	1	0	1	0	1	0
2	OFF	1	0	1	1	0	0	1	1	0	1	0	0	1	1	0
3	VOL -	1	0	1	1	0	1	0	1	0	1	0	0	0	1	0
4	VOL +	1	0	1	1	0	0	1	0	1	0	0	0	0	1	0
5	MUTE	1	0	1	1	0	1	1	1	0	1	0	0	0	1	0
6	MENU	1	0	1	1	0	0	0	1	0	0	0	1	1	1	0
7	LENS	1	0	1	1	0	1	1	0	1	0	0	0	1	1	0
8	TOOLS	1	0	1	1	0	0	1	0	1	0	1	1	1	1	0
9	BLACK SCREEN	1	0	1	1	0	1	0	0	1	0	1	1	0	1	0
10	ENTER	1	0	1	1	0	1	1	1	0	1	0	1	0	1	0
11	UNDO	1	0	1	1	0	1	0	0	1	1	0	1	0	1	0

	()	C1	C2	C3	C4	C5	C6	C7	C8	C9	C10	C11	C12	C13	C14	C15
12	IrCOM	1	0	1	1	0	1	1	1	0	1	1	0	1	1	0
13	INPUT	1	0	1	1	0	1	1	0	0	1	0	0	0	1	0
14	FREEZE	1	0	1	1	0	1	0	1	1	0	0	0	1	1	0
15	ENLARGE	1	0	1	1	0	1	0	1	1	0	1	1	0	1	0
16	AUTO SYNC	1	0	1	1	0	0	1	0	1	1	1	1	1	1	0
17	▲	1	0	1	1	0	0	0	1	1	1	1	0	0	1	1
18	▼	1	0	1	1	0	1	0	1	1	1	0	0	0	1	1
19	◀	1	0	1	1	0	0	0	0	0	1	0	1	0	1	0
20	▶	1	0	1	1	0	1	1	1	1	1	0	0	1	0	1
21	RESIZE	1	0	1	1	0	0	1	1	1	1	1	0	1	0	1
22	GAMMA	1	0	1	1	0	0	0	0	0	0	0	0	1	0	1

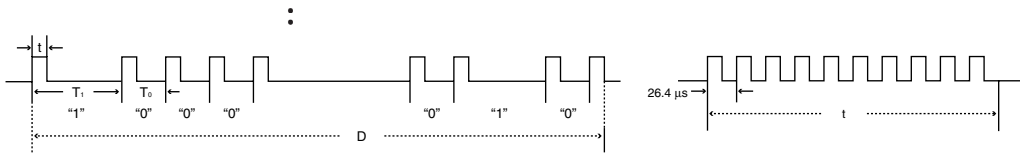
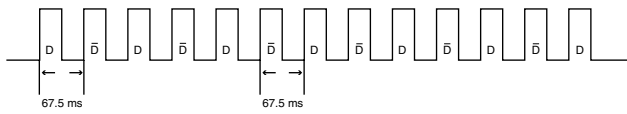


LSB MSB

C1	C2	C3	C4	C5	C6	C7	C8	C9	C10	C11	C12	C13	C14	C15
1	0	1	1	1	0	*	*	*	*	*	*	*	1	0

- C1 C5 "10110"
- C14 C15 "01"
- "10" "01"

: 15-bit



$$t = 264 \quad = 455/12 \text{ kHz}$$

$$T_0 = 1.05 \text{ ms} \quad = 1:1$$

$$T_1 = 2.10 \text{ ms}$$

15 bit

C1	C2	C3	C4	C5	C6	C7	C8	C9	C10	C11	C12	C13	C14	C15
D	D										D			

D D

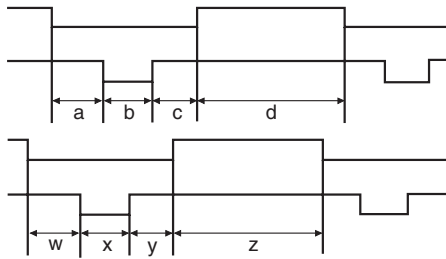
D	C1	C2	C3	C4	C5	C6	C7	C8	C9	C10	C11	C12	C13	C14	C15
	1	0	1	1	0	1	0	0	0	0	0	0	0	1	0

D	C1	C2	C3	C4	C5	C6	C7	C8	C9	C10	C11	C12	C13	C14	C15
	1	0	1	1	0	0	1	1	1	1	1	1	1	0	1



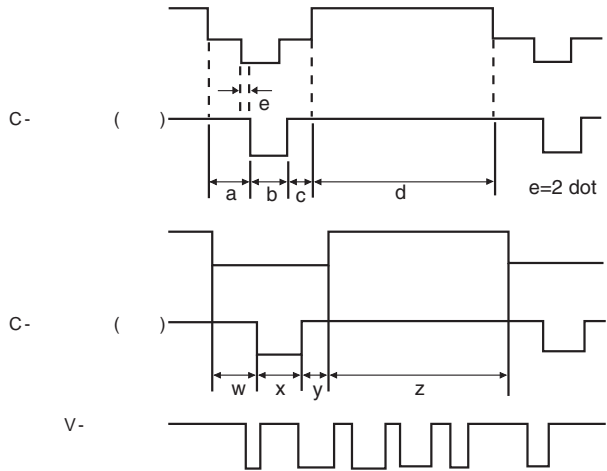
()

IBM



VESA

Macintosh



VESA



130Hz

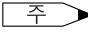
			PORCH		PORCH	PERIOD	1H (a+b+c+d)		1dot	1/H	1/dot		PORCH	x	PORCH	PERIOD	1V (w+x+y+z)		1/V
	dot	line	a	b	c	d	dot	μs	ns	kHz	MHz	H	H	H	H	H	ms	Hz	
VGA	VESA	640	350	32	64	96	640	832	26.4	31.7	37.861	31.500	32	3	60	350	445	11.8	85.080
		640	400	32	64	96	640	832	26.4	31.7	37.861	31.500	1	3	41	400	445	11.8	85.080
		720	400	36	72	108	720	936	26.4	28.2	37.927	35.500	1	3	42	400	446	11.8	85.039
	VESA	640	480	8	96	40	640	800	31.8	39.7	31.469	25.175	2	2	25	480	525	16.7	59.940
		640	480	16	40	120	640	832	26.4	31.7	37.861	31.500	1	3	20	480	520	13.7	72.809
		640	480	16	64	120	640	840	26.7	31.7	37.500	31.500	1	3	16	480	500	13.3	75.000
SVGA	VESA	800	600	56	56	80	640	832	23.1	27.8	43.269	36.000	1	3	25	480	509	11.8	85.008
		800	600	24	72	128	800	1,024	28.4	27.8	35.156	36.000	1	2	22	600	625	17.8	56.250
		800	600	40	128	88	800	1,056	26.4	25.0	37.879	40.000	1	4	23	600	628	16.6	60.317
	VESA	800	600	56	120	64	800	1,040	20.8	20.0	48.077	50.000	37	6	23	600	666	13.9	72.188
		800	600	16	80	160	800	1,056	21.3	20.2	46.875	49.500	1	3	21	600	625	13.3	75.000
		800	600	32	64	152	800	1,048	18.6	17.8	53.674	56.250	1	3	27	600	631	11.8	85.061
XGA	VESA	1,024	768	8	176	56	1,024	1,264	28.2	22.3	35.522	44.900	0	4	20	768	817	23.0	43.479
		1,024	768	24	136	160	1,024	1,344	20.7	15.4	48.363	65.000	3	6	29	768	806	16.7	60.004
		1,024	768	24	136	144	1,024	1,328	17.7	13.3	56.476	75.000	3	6	29	768	806	14.3	70.069
	VESA	1,024	768	16	96	176	1,024	1,312	16.7	12.7	60.023	78.750	1	3	28	768	800	13.3	75.029
		1,024	768	48	96	208	1,024	1,376	14.6	10.6	68.677	94.500	1	3	36	768	808	11.8	84.997
		1,152	864	64	128	256	1,152	1,600	14.8	9.3	67.500	108.000	1	3	32	864	900	13.3	75.000
SXGA	VESA	1,280	960	96	112	312	1,280	1,800	16.7	9.3	60.000	108.000	1	3	36	960	1,000	16.7	60.000
		1,280	960	64	160	224	1,280	1,728	11.6	6.7	85.938	148.500	1	3	47	960	1,011	11.8	85.002
		1,280	1,024	48	112	248	1,280	1,688	15.6	9.3	63.981	108.000	1	3	38	1,024	1,066	16.7	60.020
	VESA	1,280	1,024	16	144	248	1,280	1,688	12.5	7.4	79.976	135.000	1	3	38	1,024	1,066	13.3	75.025
		1,280	1,024	64	160	224	1,280	1,728	11.0	6.3	91.146	157.500	1	3	44	1,024	1,072	11.8	85.024
		1,280	1,024	64	192	304	1,600	2,160	13.3	6.2	75.000	162.000	1	3	46	1,200	1,250	16.7	60.000
UXGA	VESA	1,600	1,200	64	192	304	1,600	2,160	12.3	5.7	81.250	175.500	1	3	46	1,200	1,250	15.4	65.000
		1,600	1,200	64	192	304	1,600	2,160	11.4	5.3	87.500	189.000	1	3	46	1,200	1,250	14.3	70.000
		1,600	1,200	64	192	304	1,600	2,160	10.7	4.9	93.750	202.500	1	3	46	1,200	1,250	13.3	75.000
		1,600	1,200	64	192	304	1,600	2,160	9.4	4.4	106.250	229.500	1	3	46	1,200	1,250	11.8	85.000
		1,600	1,200	64	192	304	1,600	2,160	9.4	4.4	106.250	229.500	1	3	46	1,200	1,250	11.8	85.000
		1,600	1,200	64	192	304	1,600	2,160	9.4	4.4	106.250	229.500	1	3	46	1,200	1,250	11.8	85.000





()

		dot	line																				
						PORCH		PORCH	PERIOD	1H		1dot	1/H	1/dot		PORCH		PORCH	PERIOD	1V		1V	
						a	b	c	d	(a+b+c+d)						w	x	y	z	(w+x+y+z)			
dot	dot	dot	dot	dot	μs	ns	kHz	MHz		H	H	H	H	H	ms	Hz							
Macintosh™	13" Monitor	640	480	0.7 Vp-p 75 Ω load	R • G • B	64	64	96	640	864	28.6	33.1	35.000	30.2400	TTL	3	3	39	480	525	15.0	66.670	
	16" Monitor	832	624			31	65	224	832	1,152	20.1	17.5	49.693	57.246		1	3	39	624	667	13.4	74.502	
	19" Monitor	1,024	768			35	96	173	1,024	1,328	16.7	12.5	60.000	79.760		3	3	30	768	804	13.4	74.700	
	21" Monitor	1,152	870			36	128	140	1,152	1,456	14.5	10.0	68.887	100.300		3	3	39	870	915	13.3	75.287	
SUN	66Hz	1,152	900			29	128	195	1,152	1,504	14.8	10.8	61.795	92.940		2	4	31	900	937	14.3	69.950	
	76Hz	1,152	900			16	96	208	1,152	1,472	13.9	9.5	71.713	105.561		2	8	33	900	943	13.1	76.048	
	84Hz	1,152	900			24	96	168	1,024	1,312	14.1	10.8	70.838	92.940		2	8	33	800	843	11.9	84.031	
DTV	480I	640	480			R. G. B/	-	-	-	-	-	-	-	15.734		-	-	-	-	-	-	-	-
	480P	640	480		-		-	-	-	-	-	-	-	31.469		-	-	-	-	-	-	-	59.940
	720P	1,280	720		-		-	-	-	-	-	-	-	44.955		-	-	-	-	-	-	-	59.740
	1080I	1,920	1,080		-		-	-	-	-	-	-	-	33.716		-	-	-	-	-	-	-	59.940


 • LCD (CRT/LCD) 가
 • 640 × 350 VESA VGA "CRT"
 • 1,600 × 1,200 VESA UXGA sampling "640 × 400"
 1,024

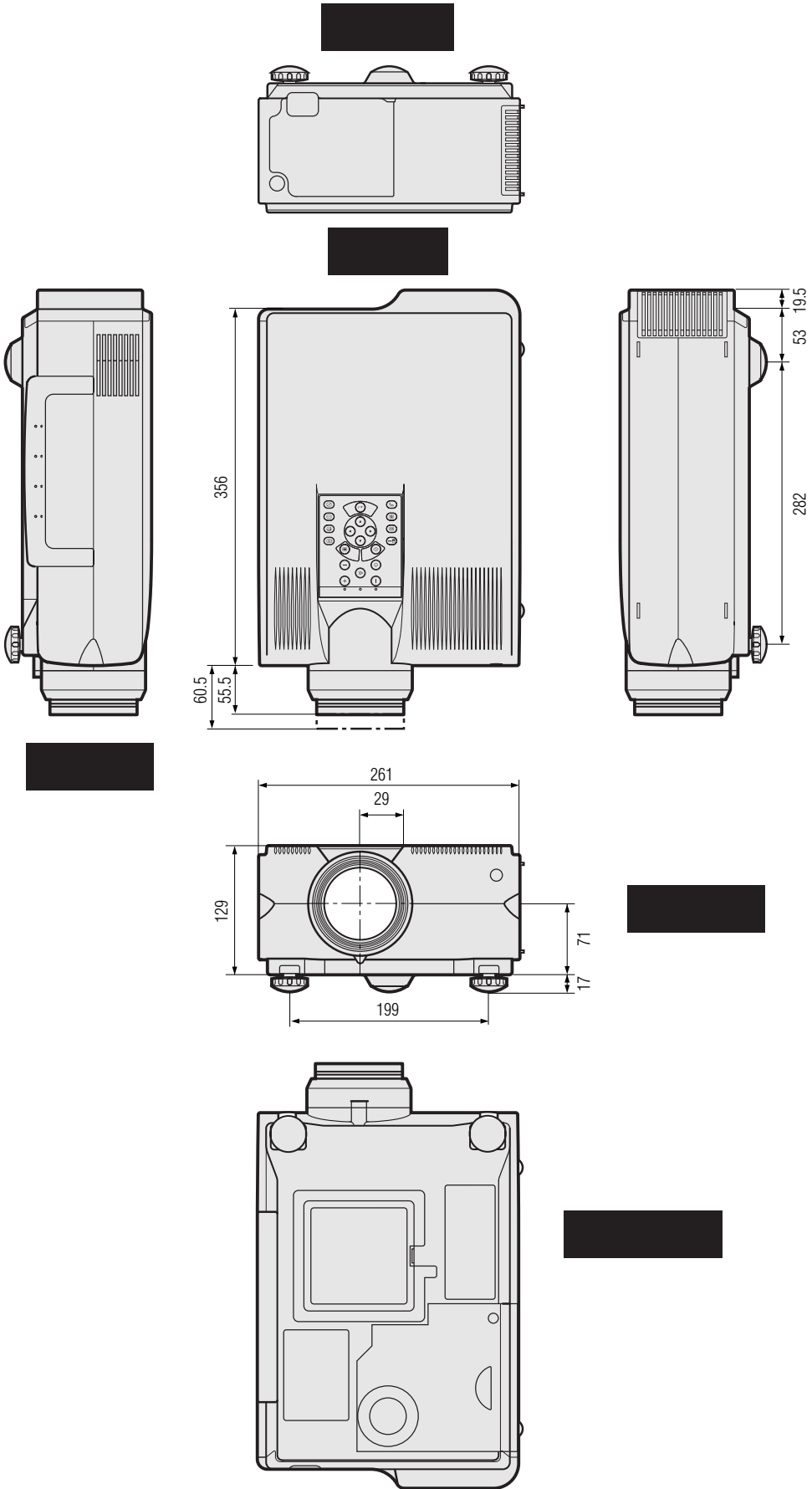




LCD
 XG-NV6XM
 PAL/SECAM/NTSC3.58/NTSC4.43/DTV 480P/DTV 720P/DTV 1080I
 LCD × 3, RGB
 LCD : 33mm (1.3 ") (20.0 [H]× 26.6 [W] mm)
 : TN
 : TFT (Thin Film Transistor)
 : 786,432 dots(1,024 [H]× 768 [V])
 1-1.3 × , F1.7-2.3 , f=49.1-63.8mm
 150W UHP
 250:1
 RCA : , 1.0Vp-p, 가 , 75Ω
 RCA : , 0.5Vrms, 22 kΩ ()
 S- 4 DIN
 Y () : 1.0 Vp-p, 가 , 75Ω
 C () : 0.286Vp-p, 75Ω
 BNC (INPUT 1)
 Y: 1.0Vp-p, 가 , 75Ω
 Pb: 0.7Vp-p, 75Ω
 Pr: 0.7Vp-p, 75Ω
 RGB 520TV () , 750TV (DTV 720P ,)
 2 W + 2 W ()
 15 D-SUB (INPUT 1, 2) , 5BNC (INPUT 1) : : 0-
 RGB / / /
 0.7Vp-p, , 75Ω
 : , 0.5Vrms, 22kΩ ()
 : TTL (/ 가) ()
)
 :
 12—230 MHz
 43—200 Hz
 15—126 kHz
 9 DIN (RS-232C)
 1 31/32" (5 cm) × 2
 AC 110—120/220—240V
 2.4A/1.2A
 50/60Hz
 265 W
 +5°C 40°C
 -20°C +60°C
 I/R 38kHz
 : 650 nm/ . : 1mW/Class II
 () 261 × 129 × 356 mm (W× H × D)()
 261 × 146 × 411.5 mm (W× H × D)()
 () 7.2 kg
 , AA 2 , (3.6m) , (3m) , BNC-
 RCA 3 , (3m) , (1m) ,
 IBM PS/2 (1m) , Mac (17cm) ,
 DIN-D-sub RS-232C (15cm) , ,
 () CD-ROM, LCD , LCD ,
 , IrDA
 (CLNS-0169CE01) , (RRMCG1535CESA) , AA
 (QCNW-5304CEZZ) , BNC-RCA
 (QPLGJ0107GEZZ) , (QCNW-4870CEZZ) ,
 (QCNW-5112CEZZ) , IBM PS/2
 (QCNW-5113CEZZ) , Mac (QCNW-5114CEZZ) ,
 DIN-D-sub RS-232C (QCNW-5288CEZZ) , ()
 RUNTK0661CEZZ) , (PFILD0080CEZZ) , ()
 PCAPH1056CESA) , CD-ROM, LCD , LCD
 , IrDA

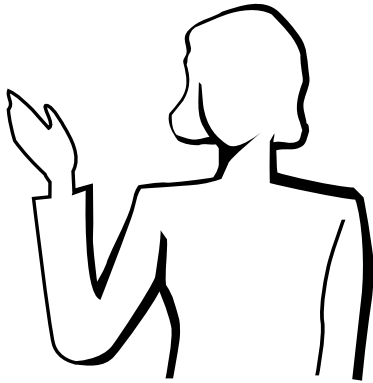
LCD (Liquid Crystal Display) TFTs 가
 786,432 (× RGB) 가
 TFTs (Thin Film Transistors)





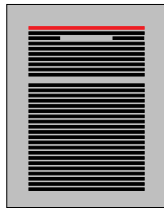
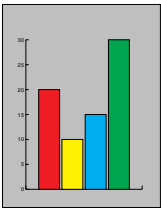
: mm





가

a.



- Astound®, Freelance®, Persuasion®, PowerPoint®, Director®
 - Macromedia
- 주
- Astound®, Freelance®, Persuasion®, PowerPoint®, Macromedia Director®

VCR, DVD

(PDAs)

가

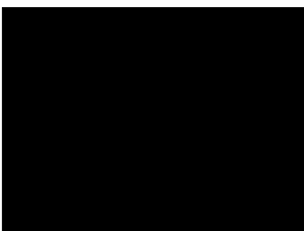
PDAs가

PDA

IrDA / IrTran-P

b.

가



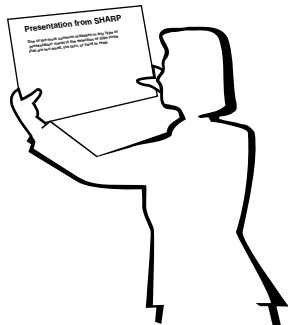
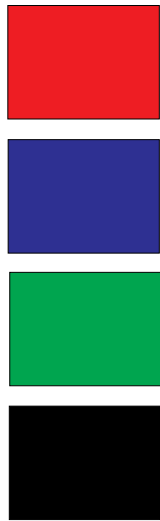
...

가

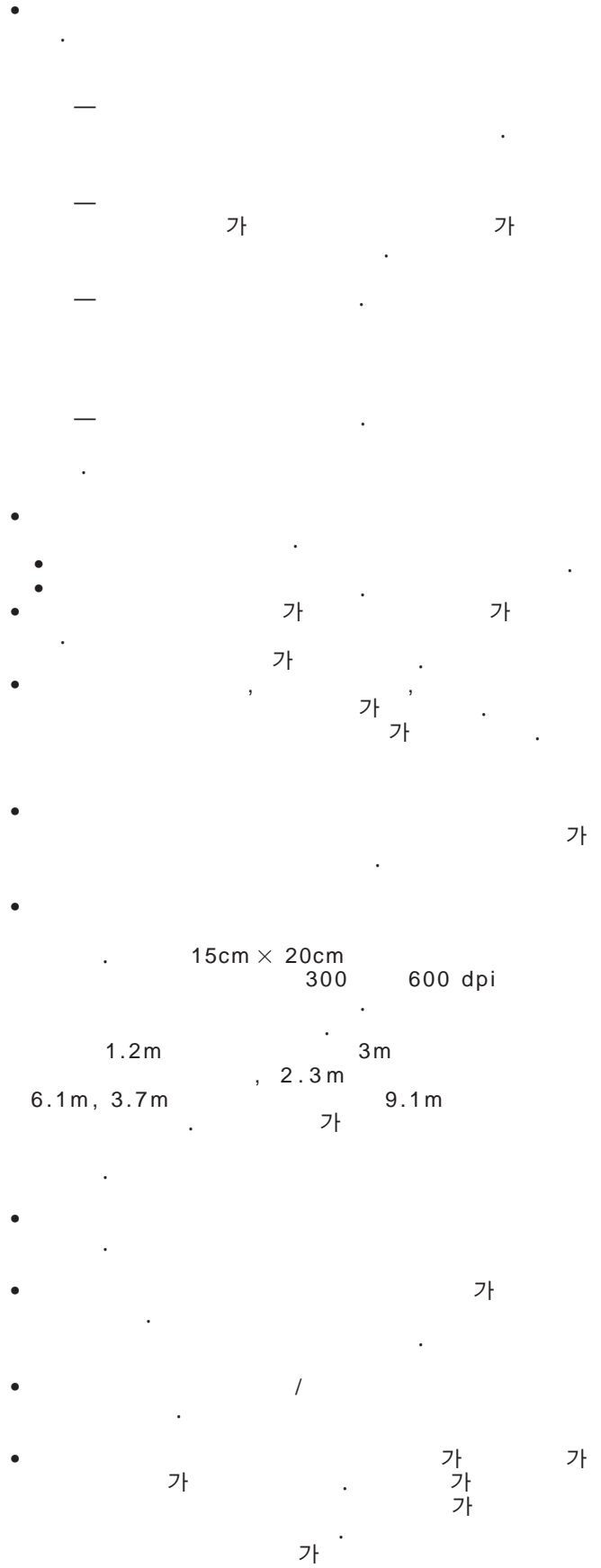
가

()





Sans-serif Serif





d.

• ,가 가

• 100
가

• , ,

• AC

• 가

e.

• 3

• 가

• 가 가

• 15 .1 20

• 가 “ ”





DTV 가 TV

가

I/P

“ ” “ ”

IrCOM

“ ” , PC

IrDA

IrTran-P

. ()

RS-232C

RS-232C

XGA

IBM/AT (DOS/V) 1,024 × 768

GUI

Graphical User Interface, 가

PDF

CD-ROM

4:3.16:9 21:9

가

4:3

4:3





┘	35		22
L	50		22
()	5		17
()	7	(INPUT)	17
□	19		46
	3	AC	11
DIN-D-sub RS-232C	14	Auto Sync	30
DTV	3	I/P	39
≡	21	IBM PS/2	15
	8	IrCOM	25
	21	IrCOM	25
	47	IrCOM	25
	22	IrDA	58
	5	IrTran-P	58
	19	RS-232C	14
	49	S-	13
□	21	XGA	3
/	22	✕	38
	15		30
	21		29
	21		17
	23		16
Mac	15		11
≡	42		23
+	34		3
	37	GUI (Graphical User Interface)	23
	13	✕	20
	41		7
	22	☞	11
BNC-RCA	13	1	12
人	44	1	11
	25	2	11
(SAPS)	29		11
	29		48
	7	≡	43
	41	Ⅱ	43
	36	PDF	6
(ENTER)	23	ㅎ	20
15 /BNC	11		36
○	13		36
1	11		26
2	11		36
	28		27
	14		19
	22			
	47			
	22			
	49			



SHARP CORPORATION

Osaka, Japan