

SHARP®

Installing/
Uninstalling

Basic
Operations

Adjusting and
Controlling

Transferring Images

Saving a
Custom Image

Troubleshooting

Glossary/
Services

Sharp Advanced Presentation Software

OPERATION MANUAL

Professional Edition
Version 1.0

Please read operation manual carefully before using your software.

This software operates under the Microsoft Windows 95, 98 and NT operating systems. This manual references only these Microsoft Windows Operating Systems and compatible Mouse devices. For details please refer to the Microsoft Windows operation manual. Various terms are used in this operation manual. If there are any terms in the manual you do not understand, please refer to “Glossary” (page 68).

Note that **Sharp Advanced Presentation Software Professional Edition** is subject to change without prior notice for upgrading and improvement.

The latest information on this software can be found at the following web site:
<http://www.sharp-world.com/projector>

- Microsoft and Windows are registered trademarks of Microsoft Corporation, USA.
- All other brand or product names are trademarks or registered trademarks of their respective holders.
- Great effort has been expended to ensure that the descriptions in this manual are correct. Should you, however, come across an inconsistency, a telephone call or letter to SHARP Corporation noting the questionable area would be highly appreciated.
- This software is the property of SHARP Corporation and all related copyright and other rights belong to SHARP Corporation.
- This manual may not be transferred wholly or in part in any form whatsoever without prior written permission. Uses other than personal use are for copyright reasons not permitted without the written permission of SHARP Corporation.
- SHARP Corporation shall in no event be liable for damages, loss of revenue or third party claims arising from the use of the software.
- Software specifications and the contents of the operation manual are subject to change without prior notice.
- Operating speed may slow down depending on computer operating environment and processing capability.
- The software is based on modules developed by the Independent JPEG Group.
- The software uses LEAD Tools Pro developed by Bunka Orient Corp. and Lead Technologies, Inc.

This software is designed for presentations and for enhancement of images projected from SHARP LCD projectors. It includes the following functions:

Projector Control Software:

Network Control

This function allows you to control the projector's functions/adjustments from your PC.

At maximum 250 projectors or grouped projectors can be controlled from a central PC/CONTROLLER.

The Video Wall function, expensive device required normally, can be performed without purchasing additional hardware.

Image Enhancement Software:

Gamma Correction

This function allows you to set the projector's Gamma values directly from your PC. The ease of specifying preset values enables very precise custom brightness, contrast and colour adjustments.

Please note that this function can only be performed via the Network (COM and LAN port).

Support Software for Presentations:

Presentation Transfer

This mode transmits **BMP** and **JPEG** images to a projector. By saving presentation slides as BMP or JPEG images you can do an entire presentation wirelessly.

Capture & Transfer

This mode allows you to transmit an image of what is currently displayed on your monitor. This is as simple as pressing the "Capture & Transfer" button in the application.

Quick Transfer

This mode is similar to "Capture & Transfer" but it can be used easily by clicking the "Right" mouse button.

NOTE

- Wireless image transfer can only be used with the XG-NV5/6/7. Wireless image transfer cannot be used to transfer images with other models.
- The XG-V10W does not support JPEG image transfer.

For Your Reference

There are five functions via the Network (COM and LAN port).

If you want to control the projector adjustments from your PC...



Network Control controls the projector adjustments via the Network (COM and LAN port). ([See page 23](#))

If you want to adjust image colours on the screen...



Gamma Correction controls the image colours via the Network (COM and LAN port). ([See page 51](#))

If you want to project your presentation slides saved as BMP or JPEG files...



Presentation Transfer transfers images quickly & easily in presentation format. ([See page 56](#))

If you want to project an image of what is currently displayed on your monitor...



Capture & Transfer captures the image on the PC monitor and transfers it to the projector. ([See page 60](#))

If you want to project a single image quickly...



Quick Transfer captures the image on the PC monitor and transfers it to the projector using the mouse as a shortcut. ([See page 62](#))

Contents

Foreword	2
For your reference	3
Contents	5

Installing/Uninstalling

Required Hardware and Software	7
Projector and PC Connections	8
Connecting Multiple Projectors with PC	8
Connecting Single Projector with PC	9
Installing the Software	10
Setting up your PC for Infrared Communications (IrCOM)	14
Uninstalling the Software	17

Operations

Starting and Quitting	19
Opening Modes	19
Starting from the “Sharp Advanced Presentation Software Professional Edition” icon in the Windows task tray	19
Starting from the Windows “Start” button	19
Starting from the “Sharp Advanced Presentation Software Professional Edition” shortcut icon on the Windows desktop	20
Selecting the Operation Mode	20
Changing Auto-Launch Setting	21
When “Auto-Launch ON” is selected	21
When “Auto-Launch OFF” is selected	21
Selecting the mode	21
Quitting	22
Help	22
Setup for controlling the projectors	23
Scan Setting	23
Deleting the set IP address	24
Projector Setting	25
Multiple Projector Operation Mode (Use ID Number)	25
Multiple Projector Operation Mode (Don't Use ID Number)	26
Single Projector Operation Mode	27
Controlling the Multiple Projectors	28
Multiple Control	28
Group Setting	30
To remove projectors belonging to groups from the group	31
To clear all the projectors belonging to group	31
Password Setting	32
Setting the Password	32
Changing the Password	33
Selecting the Keylock Level	34
Projector Name and Unique Name setting	35
E-mail sending function	36
Mail Address Book setting	36
Send Mail Setting	36

Mail Send Timing	37
About the "Condition" check box	37
Error notification function	38
Projector Timer Control	39
Controlling the Projector's Adjustment	40
Network Control	40
"Set Up" Adjustment	42
"Input1/2/3/4/5/6 PICT" Adjustment	43
"Fine Sync" Adjustment	44
"Audio" Adjustment	45
"Options" Adjustment	46
Save Control Setting and Load Control Setting	48
To make "Save Control Setting"	48
To make "Load Control Setting"	48
Video Wall Setting	49
To reset the current assignment settings	50
Projector image assignment with the Video Wall Setting ...	50
Adjusting Images	51
Gamma Correction	51
Adjusting the GAMMA curve	53
Setting the gamma correction area	53
Saving the gamma correction settings	54
Loading the gamma correction settings	54
Setup for Transferring Images	55
Changing Compression Rate	55
Transferring Images	56
Presentation Transfer	56
To send a single image ("Send Image")	58
To send all the images ("Self Run")	59
Capture & Transfer	60
To send another image	61
Quick Transfer	62
To send another image	62
Saving a Custom Image as Startup Image and Background Image	63

Appendix

Troubleshooting	64
Unable to transfer images or an error occurs with communication	64
In case of cable communications (RS-232C and LAN)	64
In case of infrared communications (IrCOM)	64
"Gamma Correction"/"Network Control" is not operating properly	65
The transmitting speed is low	65
If 4 Mbps IrDA should fail	65
Unable to save the startup image	66
Quality of the image is low	66
Unable to speed up the transfer or improve the image quality	66
Unable to speed up "Gamma Correction" though the transmitting speed was changed	66
Table of Functions by Model	67
Glossary	68
Services	70

Required Hardware and Software

Sharp Advanced Presentation Software Professional Edition requires the following hardware and software for operation.

PC running under Microsoft Windows 95/98 or Windows NT

CPU	233 MHz Pentium or higher is recommended.
Display	A 800 × 600 dot display capable of displaying 65,536 colours or more
Memory	32 MB or more
Hard disk free space	80 MB or more
Interface	An available RS-232C serial port for transferring images and controlling the projector

CD-ROM drive

NOTE

Note that this software may not operate normally if the serial port settings, etc., are not correct when serial equipment other than projectors is also connected to the computer.

Using infrared communications (IrCOM)

If you use the NV-5/6/7, transferring images can be performed using infrared communications (IrCOM). The PC requires a built-in infrared communications port or an external infrared communications adapter.

- **For Windows 95 users:**
Microsoft **IrDA 2.0 (Infrared Driver)** has to be installed on your PC to use this software. If it is not installed, you can obtain it from the Microsoft's site on the Internet.
- **For Windows 98 users:**
Microsoft Windows 98 supports IrDA communications as a default programme.
Please consult to Microsoft operation manual for more details.
- **For Windows NT users:**
Infrared communications (IrCOM) cannot be used.
- **The transmission speed of infrared communications is dependent on the IrDA version of the PC.**
 - IrDA 1.0 : 9,600 bps - 115.2 kbps
 - IrDA 1.1 : 4 Mbps

Therefore the actual speed depends on the IrDA version your PC supports.
See the computer's instruction manual for the IrDA specifications.

NOTE

We cannot guarantee that the software will operate on computers whose motherboards have been changed or modified, or on computers that the users have configured themselves.

Projector and PC Connections

This software requires the use of RS-232C serial cable or LAN cable or infrared communications. For details on PC connections, refer to the projector's operation manual.

CAUTION

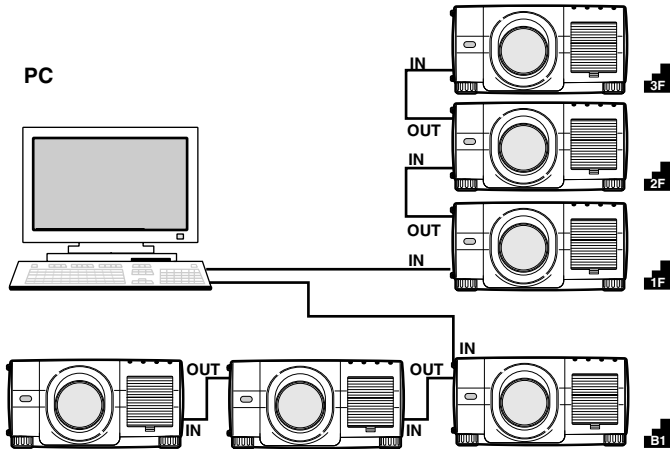
Before connecting, be sure to turn both the projector and the computer off. After making all connections, turn the projector on first. The computer should always be turned on last.

NOTE

- Please read the computer's instruction manual carefully.
- If you use the NV-5/6/7, image transfer by using infrared communications can be available.

Connecting Multiple Projectors with PC

When connecting multiple projectors using ID numbers (when forming a network system consisting only of XG-V10Ws)

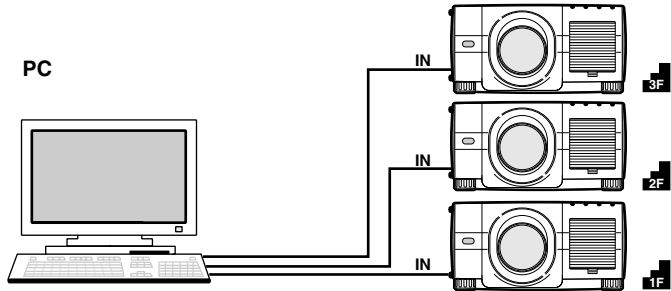


- The connection between PC and the Projector or the Projector and the Projector is possible by using projector's RS-232C IN/OUT terminal.
- Up to 250 projectors can be connected.
- Up to 10 COM ports can be used.
- Daisy chain connections are possible.
- LAN connections are possible (when using the optional extension board (AN-L10T)).
- See "Table of Functions by Model" (page 67) about Projector's available function.

NOTE

The AN-L10T is scheduled for release in the near future.

When connecting multiple projectors without using ID numbers (When forming a network including projectors other than the XG-V10W)



- Up to 10 projectors can be connected.
- Up to 10 COM ports can be used.
- Daisy chain connections are not possible.
- LAN connections are not possible.
- See “Table of Functions by Model” (page 67) about Projector’s available function.

NOTE

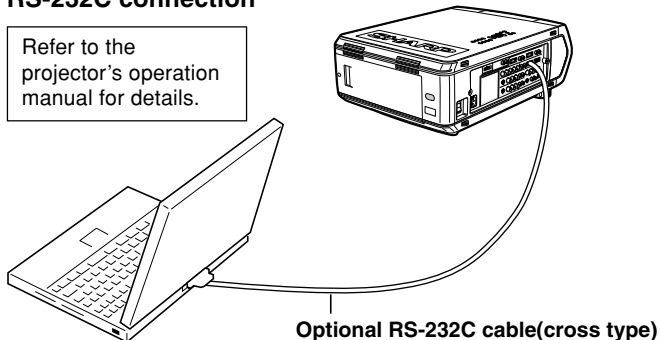
Connect one projector per COM port.

If you want to use the connection via the COM ports, the same number of COM ports as the projectors are needed. If the numbers of COM ports built in your PC is shorter than the numbers of projectors, purchase the extension board (commercially available) to add the COM port to your PC.

Connecting Single Projector with PC

RS-232C connection

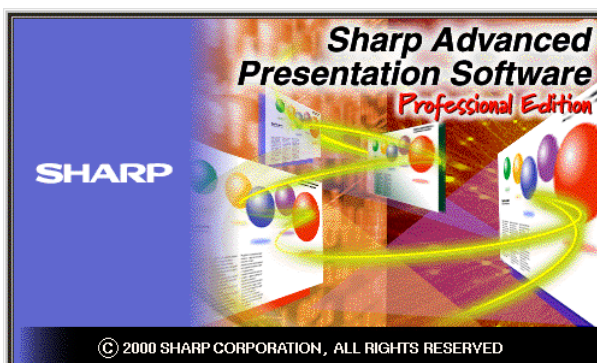
Refer to the projector’s operation manual for details.



Installing the Software

This software can be installed using the installation programme supplied on the “**Sharp Advanced Presentation Software Professional Edition CD-ROM**”.

- 1 Check that this software is suited for your computer.**
For details, refer to “Required Hardware and Software” ([page 7](#)).
- 2 Quit all running applications before installing this software.**
Be sure to quit all other applications so that no problems occur with the installer.
- 3 Delete the previous version of the Sharp Advanced Presentation Software.**
For details, refer to “Uninstalling the Software” ([page 17](#)).
- 4 Insert the “Sharp Advanced Presentation Software Professional Edition CD-ROM” in the CD-ROM drive.**
- 5 Double click the “My Computer” icon.**
- 6 Double click the CD-ROM drive icon.**
- 7 Double click the “saps_pro” folder.**
- 8 Double click the “Setup.exe” icon.**
 - ▶ The “Sharp Advanced Presentation Software Professional Edition Opening Image” will be displayed.

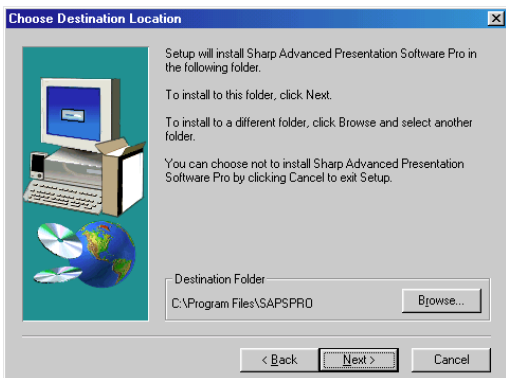


- ▶ The “**Sharp Advanced Presentation Software Professional Edition**” dialogue box will open.



9 Click “Next>”.

- ▶ The “**Choose Destination Location**” dialogue box will open.



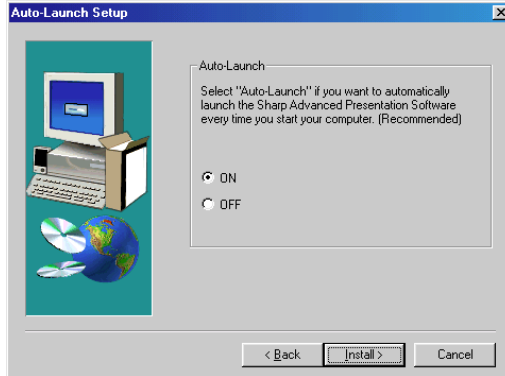
10 The folder under which the software will be installed is displayed in “Destination Folder”.

NOTE

To select another folder, click “**Browse...**”.

11 Click “Next>”.

- ▶ “Auto-Launch Setup” dialogue box will open.



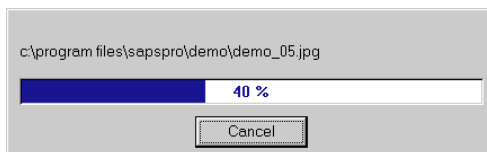
12 Click “ON” under “Auto-Launch” to automatically launch the software every time you start your PC. (Recommended)

NOTE

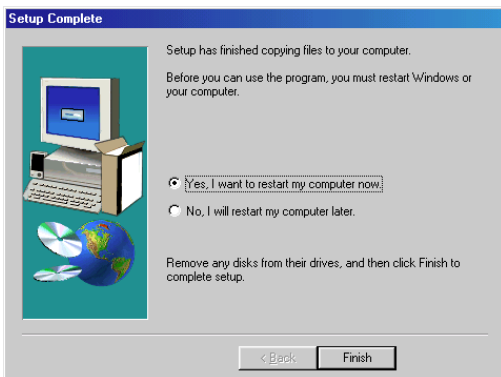
If you set “Auto-Launch ON”, a “Sharp Advanced Presentation Software Professional Edition” icon will reside in the Windows task tray. If not, use the “Sharp Advanced Presentation Software Professional Edition” shortcut icon on the desktop or the Windows “Start” menu.

13 Click “Install>”.

- ▶ Installation will start.



- ▶ When the installation is completed, the “**Setup Complete**” dialogue box will open. To use the programme immediately, please restart your computer.



14 Click “Finish”.

Setting up your PC for Infrared Communications (IrCOM)

If you use the NV-5/6/7, image transfer can be performed using infrared communications (IrCOM).

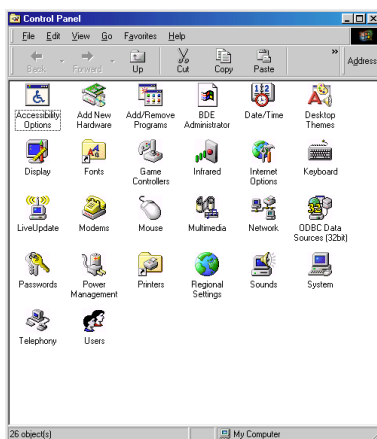
To use infrared communications, set the PC's port for infrared communications according to the following steps.

NOTE

Infrared communications (IrCOM) cannot be used with Windows NT.

1 Click “Start”, and then click “Settings”, then select “Control Panel”.

► The “Control Panel” window will open.



2 Double click the “Infrared Monitor” icon.



Infrared

► The “Infrared Monitor” window will open.

NOTE

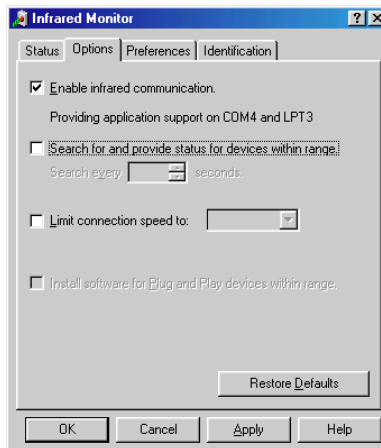
For Windows 95 users:

If an “Infrared Monitor” icon is not displayed, a Microsoft IrDA 2.0 (Infrared Driver) is not installed on the computer.

You can obtain it from the Microsoft's site on the Internet.



- 3** Click the “Options” tab.
▶ The “Options” sheet will open.

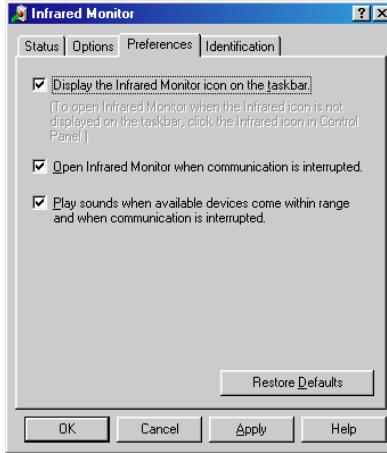


- 4** Check the “Enable infrared communication” check box.
Select the port used for infrared communications.

NOTE ▶

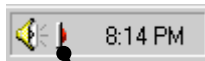
Refer to the PC’s instruction manual for the appropriate port settings. Do not check the “Search for and provide status for devices within range” and “Limit connection speed to” check box.

- 5 Click the “Preferences” tab.**
▶ The “Preferences” sheet will open.



- 6 Click “Restore Defaults”.**
The system will return to standard settings.

- 7 Click “OK”.**
▶ The “Infrared Monitor” window will close and the “Infrared Monitor” icon will appear in the Windows task tray.




Infrared Monitor icon

NOTE ▶

About the “Infrared Monitor” icon

 Enable: Ready to transfer

 Disable: Not ready to transfer

Uninstalling the Software

Always uninstall **Sharp Advanced Presentation Software Professional Edition**, when installing a new or updated version.

Before Uninstallation

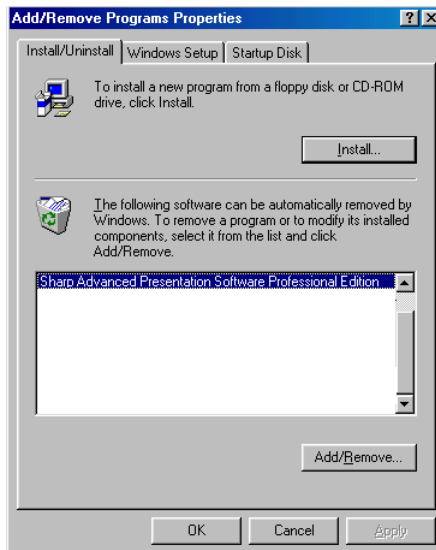
- Software uninstallation can not be done when **Sharp Advanced Presentation Software Professional Edition** is running. Please make sure that the software is closed before proceeding.
- Before uninstalling **Sharp Advanced Presentation Software Professional Edition**, the “**Auto-Launch**” setting must be “**OFF**”.
 - 1) Double click the “**Sharp Advanced Presentation Software Professional Edition**” icon.
 - 2) Click the “**Option**” menu, select “**Auto-Launch ON/OFF**”.
 - 3) Select “**OFF**”.
 - 4) Close **Sharp Advanced Presentation Software Professional Edition**.

- 1 Click “**Start**”, and then click “**Settings**”, then select “**Control Panel**”.
- 2 Double click the “**Add/Remove Programs**” icon.



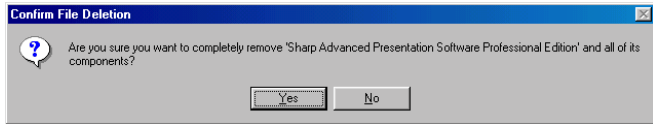
Add/Remove
Programs

- 3 Click the “**Sharp Advanced Presentation Software Professional Edition**”.

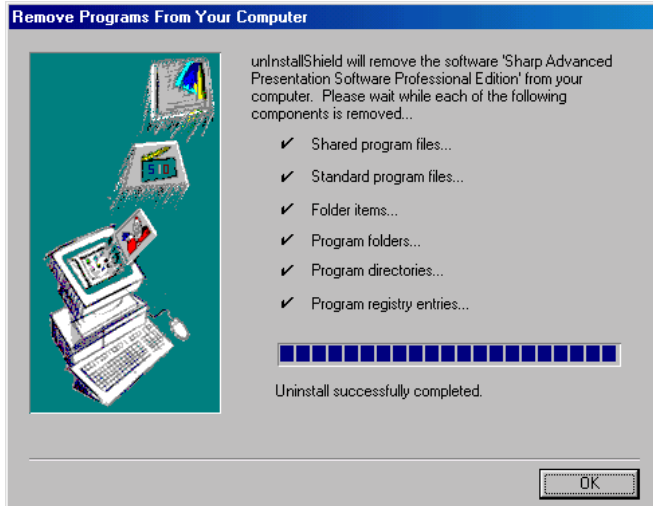


4 Click the “Add/Remove...”.

5 Click the “Yes”.



6 When uninstallation is correctly completed, “Uninstall successfully completed” message will appear. Click “OK”.



Opening Modes

Before starting the software, make sure that the projector and the PC are correctly setup (page 8). There are three ways to start up the software.

Starting from the “Sharp Advanced Presentation Software Professional Edition” icon in the Windows task tray



NOTE

This icon appears when “Auto-Launch ON” is selected. See page 21 for “Auto-Launch” setting.

1 Start up the projector.

Make sure to turn the projector on first. The computer should always be turn on last.

NOTE

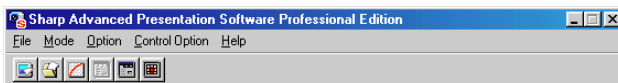
The projector must be in IrCOM mode to receive the images. Press the “IrCOM” button on the projector or the remote control.

For NV5/6/7 users:

To use infrared communications, select the “IrCOM” mode, referring to the projector operation manual for details.

2 Start up the PC. Click the “Sharp Advanced Presentation Software Professional Edition” icon in the Windows task tray.

- ▶ The “Sharp Advanced Presentation Software Professional Edition” window will open.



Starting from the Windows “Start” button



1 Start up the projector.

Make sure to turn the projector on first. The computer should always be turn on last.

NOTE

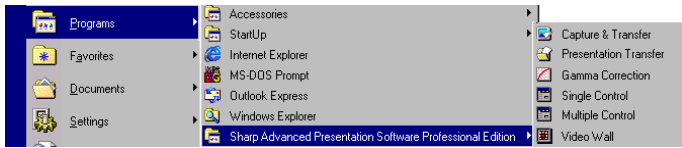
The projector must be in IrCOM mode to receive the images. Press the “IrCOM” button on the projector or the remote control.

For NV5/6/7 users:

To use infrared communications, select the “IrCOM” mode, referring to the projector operation manual for details.

2 Start up the PC. Click the “Start” button, set the pointer to “Programs” and then “Sharp Advanced Presentation Software Professional Edition”.

► The mode dialogue box will open.



Starting from the “Sharp Advanced Presentation Software Professional Edition” shortcut icon on the Windows desktop



1 Start up the projector.

Make sure to turn the projector on first. The computer should always be turn on last.

NOTE ►

The projector must be in IrCOM mode to receive the images. Press the “IrCOM” button on the projector or the remote control.

For NV5/6/7 users:

To use infrared communications, select the “IrCOM” mode, referring to the projector operation manual for details.

2 Double click the “Sharp Advanced Presentation Software Professional Edition” shortcut icon on the Windows desktop.

► The mode dialogue box will open.

Selecting the Operation Mode

1 Select “Operation Mode Setting...” from the “File” menu.

2 Select the **Operation Mode.**

- To operate a single projector, select “Single Projector Operation Mode”
- To operate multiple projectors, select “Multiple Projector Operation Mode”, then choose “Use ID Number” or “Don’t Use ID Number”.

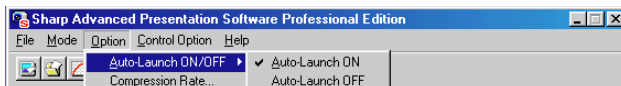
NOTE ►

- When “Don’t Use ID Number” is selected for “Multiple Projector Operation Mode”, up to 10 projectors can be operated at once. Model other than the XG-V10W can be used.
- When “Use ID Number” is selected for “Multiple Projector Operation Mode”, up to 250 projectors can be operated at once. When using “Use ID Number”, models other than the XG-V10W cannot be used.

Changing Auto-Launch Setting

The default “**Auto-Launch**” setting is “**ON**”, which launches this software automatically when the PC starts up. You can change the setting as follows.

- 1 Click the “**Option**” menu, select “**Auto-Launch ON/OFF**”.
- 2 Select the setting as required.



When “Auto-Launch ON” is selected

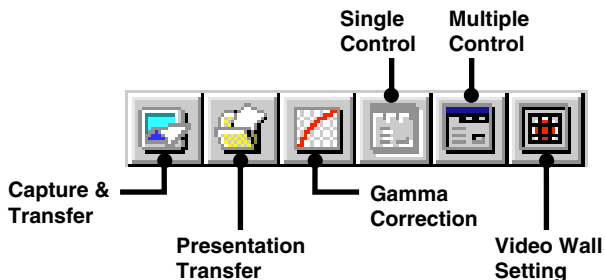
- The “**Sharp Advanced Presentation Software Professional Edition**” icon is resident in the Windows task tray.
- The software is automatically launched when the PC starts up.

When “Auto-Launch OFF” is selected

- The “**Sharp Advanced Presentation Software Professional Edition**” icon is removed from the Windows task tray.
- In this case the software must be started from the “**Start**” menu or the “**Sharp Advanced Presentation Software Professional Edition**” shortcut icon on the Windows desktop.


Selecting the mode

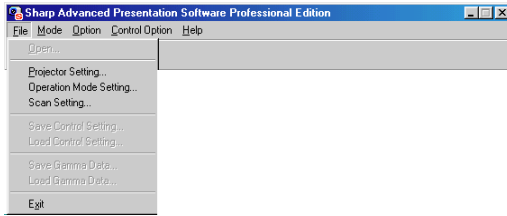
- 1 Start up the projector.
- 2 Select the **mode** you require from the “**Mode**” menu. Or you can use the shortcut buttons below the menu bar.



- The mode dialogue box will open.

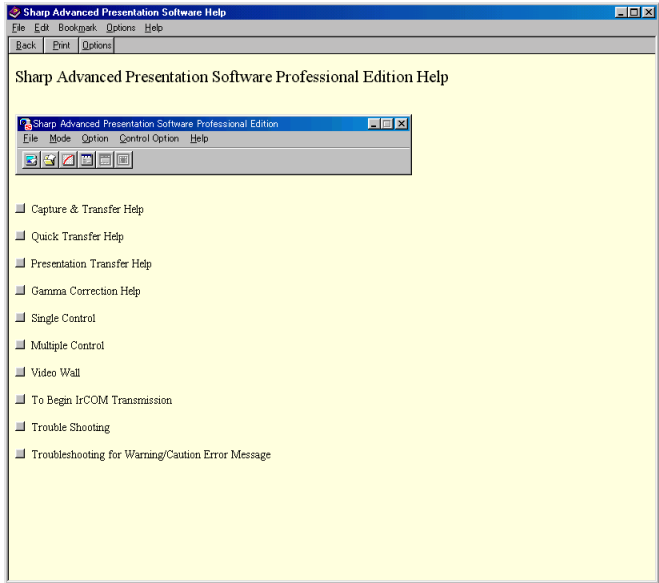
Quitting

Click the “File” menu, and select “Exit”.
Or you can use the  button.

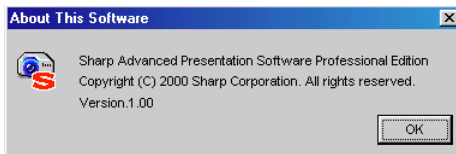


Help

To view Help, click the “Help” menu. When the “Help” window opens, click the desired item in the Help list.



To check the software version, select “About This Software...” from the “Help” menu.



Setup for controlling the projectors

The settings for the projectors must first be made to the software before attempting to control any projector. Settings are made at “Scan Setting” or at “Projector Setting”.

To control multiple projectors using the projectors’ ID numbers:

Normally the settings are made at “Scan Setting”, but the same settings can also be made at “Projector Setting”.

To control individual or multiple projectors without using the projectors’ ID numbers: Make the settings at “Projector Setting”.

NOTE

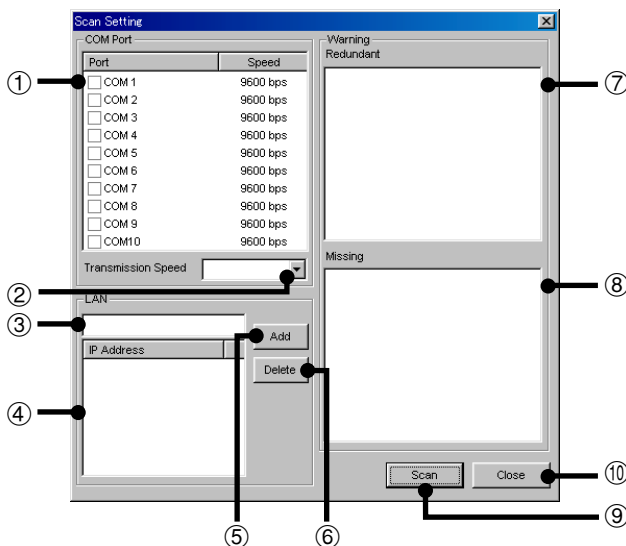
The settings for the ID numbers on the projector is needed to control the projector by using the ID numbers.

Scan Setting

This is a function by which this software automatically identifies and controls all the projectors connected to the PC without setting the ports and models. To use this function, the COM ports and IP address to be scanned with “Scan Setting” must be set beforehand.

See below about Scan Setting.

- 1 Select “Scan Setting...” from the “File” menu.
Set the projector to be scanned here.



- 1 COM port enable/disable check box
- 2 Set the COM port Transmission Speed.
- 3 IP address input area

- ④ List of input IP addresses and enable/disable check box
- ⑤ Add button
When clicked after inputting the IP address, the address is added to the list in ④.
- ⑥ Delete button
When clicked after selecting the IP address in ④, that address is deleted.
- ⑦ List of projectors whose IDs are redundant.
- ⑧ List of projectors whose IDs are missing.
- ⑨ Scan button
- ⑩ Close button

2 Set the port to which the projector is connected.

- At ①, Check the check box of the COM port to which the projector is connected.
- To use a LAN, input the IP address at ③, click the “Add” button, then check the check box at ④.

3 Click the “Scan” button.

Deleting the set IP address

1 Select the IP address to be deleted at ④.

2 Click the “Delete” button.

NOTE

LAN connections are possible when using the optional extension board (AN-L10T).

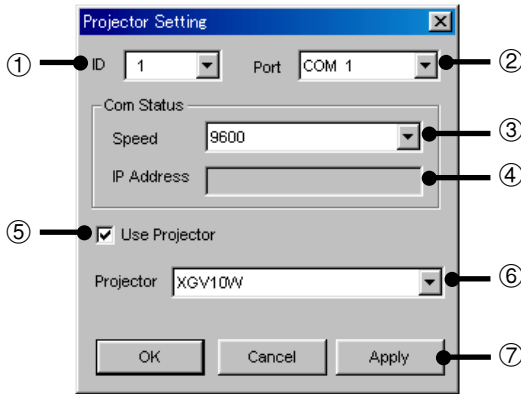
The AN-L10T is scheduled for release in the near future.

Projector Setting

When “Multiple Projector Operation Mode (Use ID Number)” is selected at “Operation Mode Setting”, it is possible to add projectors manually without using the scan setting automatic identification function. In addition, when “Multiple Projector Operation Mode (Don’t Use ID Number)” or “Single Projector Operation Mode” is selected, make the respective settings at “Projector Setting”.

Multiple Projector Operation Mode (Use ID Number)

1 From the “File” menu, select “Projector Setting”.



- ① Select the ID number.
- ② Select the port.
- ③ Select the transmission speed.
- ④ Input the IP address.
- ⑤ Enable/disable check box
- ⑥ Select the projector model.
- ⑦ Apply button

2 Select the ID number.

3 Select the port to which the projector is connected.

NOTE

If “LAN” is selected here, input the projector’s IP address.

4 Select the speed of transmission between the computer and the projector.

NOTE

- Set the transmission speed set here and the transmission speed on the projector to the same speed.
- For instructions on the projector’s transmission speed setting, refer to the projector’s operation manual.

- 5** Select the projector model and check the “Use Projector” check box.
- 6** Click the “Apply” button.

Multiple Projector Operation Mode (Don’t Use ID Number)

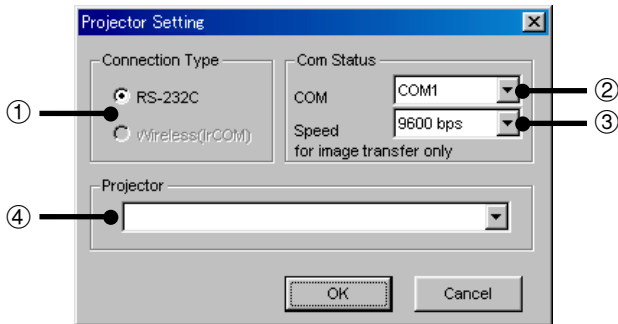
- 1** From the “File” menu, select “Projector Setting”.
- 2** Select the port to which the projector is connected.
- 3** Select the speed of transmission between the computer and the projector.

NOTE 

- Set the transmission speed set here and the transmission speed on the projector to the same speed.
 - For instructions on the projector’s transmission speed setting, refer to the projector’s operation manual.
- 4** Select the projector model and check the “Use Projector” check box.
 - 5** Click the “Apply” button.

Single Projector Operation Mode

1 From the “File” menu, select “Projector Setting”.



- ① Select the connection type.
- ② Select the port.
- ③ Select the transmission speed.
- ④ Select the projector model.

2 Select the connection type.

3 Select the port to which the projector is connected.

4 Select the speed of transmission between the computer and the projector.

NOTE

- Set the transmission speed set here and the transmission speed on the projector to the same speed.
- For instructions on the projector's transmission speed setting, refer to the projector's operation manual.


5 Select the projector model.

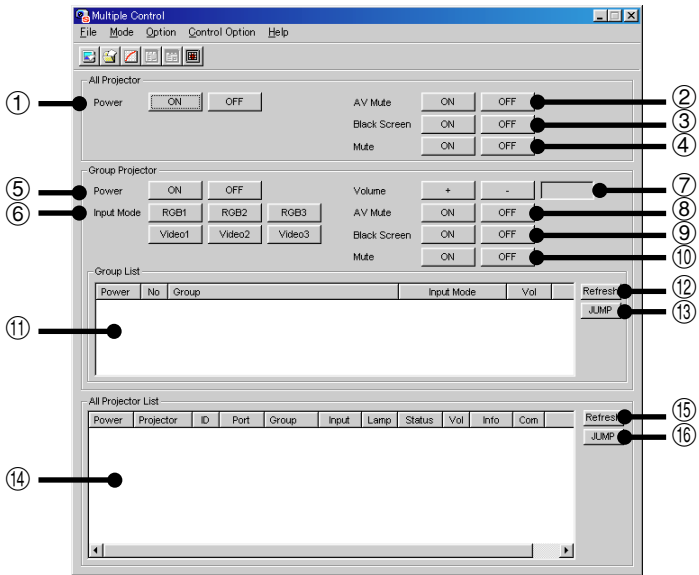
6 Click the “OK” button.

Controlling the Multiple Projectors

Multiple Control

This is a function for controlling multiple connected projectors (see page 8) from your computer. Depending on the connections, up to 250 projectors can be controlled.

- 1 Repeat steps 1-2 on “Selecting the Operation Mode” (page 20).
- 2 Select “Multiple Control” from the “Mode” menu or click the  icon on the menu bar.
 - ▶ The **Multiple Operation Panel** opens.



All projector: Section for controlling all the connected projectors.

- ① Select the Power ON/OFF
- ② Select “**AV Mute**” ON/OFF
The mute and black screen functions are conducted simultaneously.
- ③ To make “**Black Screen**” ON/OFF
- ④ Select “**Mute**” ON/OFF

CAUTION

If the power of all the projectors is turned on at once, the power capacity in the facilities may be exceeded. To avoid this, this software is equipped with a function for making a setting for turning on the power of the projectors one at a time.

- 1 From the “Control Option” menu, select “Configuration”.
- 2 Select “ALL” if you want to power of all the projectors to turn on at once, “Delayed” if you want the projectors to turn on one at a time in order.
- 3 Click the “OK” button.

Group Projector: This is a section for controlling grouped projectors one group at a time. The adjustment items in this frame are reflected for all the projectors in the selected group.

- ⑤ Select the Power ON/OFF
- ⑥ Select the “Input Mode” from RGB1 to 3, or Video 1 to 3.
- ⑦ To make “Volume” adjustment.
The volume of the projector with the lowest ID number in the group is displayed.
- ⑧ Select “AV Mute” ON/OFF
- ⑨ To make “Black Screen”
- ⑩ Select “Mute” ON/OFF
- ⑪ Group List
Displays a list of all the connected groups.
- ⑫ Updates the display to the most recent information.
- ⑬ Jumps to the detailed settings for the group or for the individual projectors. (For a description of the detailed settings, [see page 40.](#))

All Projector List: This is a section for a list of all the identifiable connected projectors.

- ⑭ Projector List:
Displays a list of all the identifiable connected projectors.
- ⑮ Updates the display to the most recent information.
- ⑯ Jumps to the detailed settings for the group or for the individual projectors. (For a description of the detailed settings, [see page 40.](#))

NOTE 

Some items may not be displayed, depending on the type of projector.

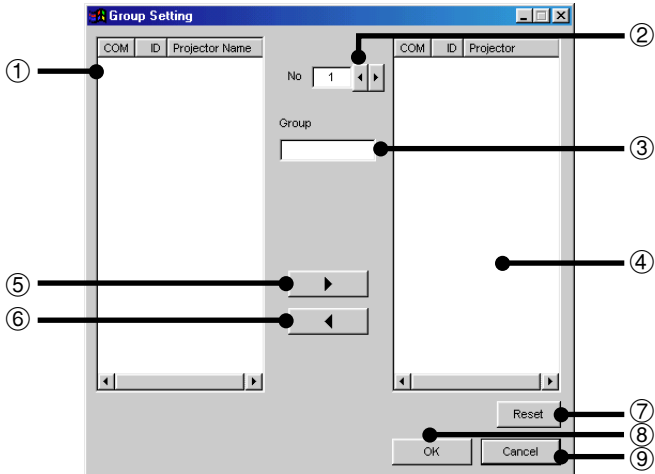
Group Setting

Individual projectors not belonging to groups can be added to groups, and projectors belonging to groups can be removed from groups.

NOTE

This function can only be available in the “Multiple Projector Operation Mode (Use ID Number)”.

- 1 Select “Group Setting...” from the “Control Option” menu.**
 - ▶ The “Group Setting” window will open.



- ① List of connected projectors
- ② Select Group No.
- ③ Input Group Name.
- ④ List of projectors belonging to groups
- ⑤ Right arrow
Adds the projector selected in the list of connected projectors to the group.
- ⑥ Left arrow
Removes the projector selected in the list of projectors belonging to the group from the group.
- ⑦ Clear all the projectors belonging to the selected group.
- ⑧ Applies the setting.
- ⑨ Cancels the setting.

- 2 Select the group to be registered in the Group Number and Group Name input column.**

- 3 Select the projector in the list of connected projectors.**

- 4 Click the right arrow button.**

The selected projector is displayed in the list of projectors to which groups also belong.

5 Click “OK”.

NOTE

One projector can be assigned to one group at a time.

To remove projectors belonging to groups from the group

- 1 Select “Group Setting...” from the “Control Option” menu.
▶ The “Group Setting” window opens.
- 2 Select Group No. by clicking ◀ / ▶.
- 3 Select the projector in the list of projectors belonging to the group.
- 4 Click the left arrow button.
The selected projector is removed from the list of projectors belonging to the group.

NOTE

To remove all the projectors belonging to a group, click the “Reset” button after selecting the group number in step 2.

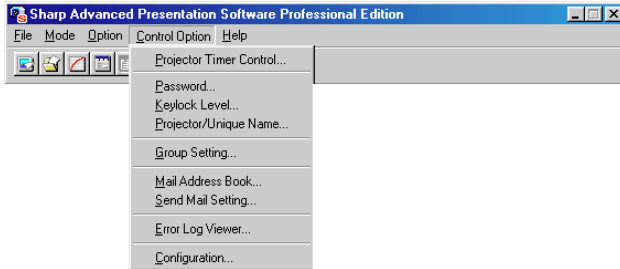
To clear all the projectors belonging to group

- 1 Select “Group Setting” from the “Control Option” menu.
▶ The “Group Setting” window opens.
- 2 Select Group No. by clicking ◀ / ▶.
- 3 Click the “Reset” button.
- 4 Delete the group name displayed in the Group Name input section.
- 5 Click “OK”.

Password Setting

Setting the Password

- 1 From the “Control Option” menu, select the “**Password**”. The “Set Projector Password” dialogue box will open.



- 2 Enter 4-digit password using keyboard into the “New Password” on the “Set Projector Password” dialogue box. When using the Multiple Projector Operation Mode, select the “ID number” or “COM port number” before performing the above operation.



- 3 Enter 4 digit password using keyboard into the “Reconfirm” on the “Set Projector Password” dialogue box. Check the “Save Password” check box if you want to save the password.
- 4 Click “OK” .

NOTE

After setting the password, be sure to write it down in a secure location so as not to forget it.

Changing the Password

- 1 From the “Control Option” menu, select the “**Password**”.
- 2 Enter 4-digit old password using keyboard into the “Old Password” on the “Set Projector Password” dialogue box. When using the Multiple Projector Operation Mode, select the “ID number” or “COM port number” before performing the above operation.



The screenshot shows a dialog box titled "Set Projector Password". At the top, there is a dropdown menu. Below it, the "Old Password" field is filled with "****". The "New Password" and "Reconfirm" fields are empty. There is an unchecked checkbox labeled "Save Password". At the bottom, there are three buttons: "OK", "Cancel", and "Apply".

- 3 Enter 4-digit new password using keyboard into the “New Password” and “Reconfirm” on the “Set Projector Password” dialogue box. Check the “Save Password” check box if you want to save the password.



The screenshot shows the same "Set Projector Password" dialog box. In this step, the "New Password" and "Reconfirm" fields are also filled with "****". The "Save Password" checkbox remains unchecked. The "OK", "Cancel", and "Apply" buttons are still present at the bottom.

- 4 Click “OK” .

NOTE

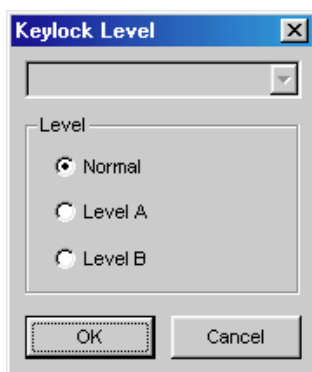
The password setting is canceled if “OK” is clicked when nothing is input into the “New Password” and “Reconfirm” area.

Selecting the Keylock Level

This function can be used to lock the use of certain operation on the projector.

1 From the “Control Option” menu, select the “Keylock Level”.

- ▶ The “Keylock Level” window will open.



2 Select the Keylock level from “Normal”, “Level A” or “Level B”.

When using the Multiple Projector Operation Mode, select the “ID number” or “COM Port number” before performing the above operation.

See the diagram below about the description of Keylock Levels.

3 Click “OK” button.

Description of Keylock Levels

Selected item	Description
Normal	All operation buttons are functional.
Level A	Only INPUT, VOLUME, MUTE, BLACK SCREEN on the projector are available.
Level B	All operation buttons on the projector are unavailable.

NOTE

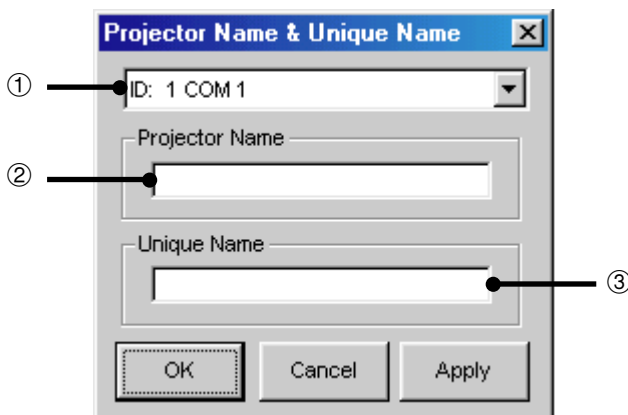
- The projector can still be fully operated with either the remote or this software while using the Keylock function.
- If a password is set, the “Keylock Level” setting will only work if the proper password is input.

Projector Name and Unique Name setting

Names can be given to multiple connected projectors using IDs here. When giving names, it is possible to select “Unique Name” with a password or “Projector Name” without a password.

1 Select “Projector/Unique Name...” from the “Control Option” menu.

▶ The “Projector Name & Unique Name” Window will open.



- ① Select the ID number/COM Port number.
- ② Projector Name Input area
12 characters can be input at maximum.
If already set, the set projector name is displayed.
- ③ Unique Name Input area
12 characters can be input at maximum.
If already set, that unique name is displayed.

2 Select Projector ID by clicking ▼

3 Input the new name in the Projector Name or Unique Name column.

NOTE

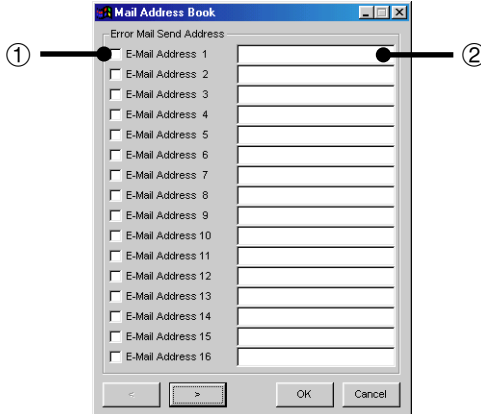
- The “Projector Name” is a name for facilitating identification of the individual projectors when controlling multiple projectors. We recommend inputting the projector’s model name, the place where it is installed, etc., at “Projector Name”.
- The “Unique Name” does not actually affect projector control. It is protected by the password set on page 32. (Only those who know the password can change it.) We recommend inputting the name of the projector’s owner, etc., at “Unique Name”.

E-mail sending function

This software is equipped with a function for sending mail messages to the address registered when errors occur on the Projector. The PC setting for E-mail (e.g., LAN connection setting or Dial-up connection setting) at first is needed to use this function.

Mail Address Book setting

1 Select “Mail Address Book” from the “Control Option” menu.

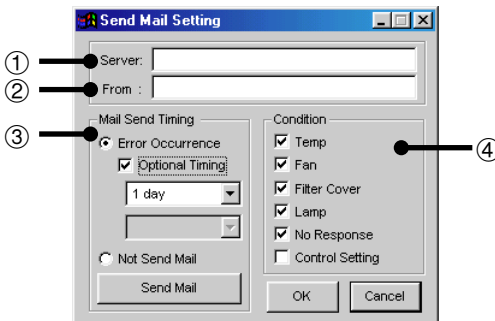


- ① Enable/disable check box
- ② Sending mail address input area

2 Input the mail address to which the mail messages are to be sent.

3 Check the enable/disable check box.

Send Mail Setting



- ① Mail server address input area
- ② Sender mail address input area

- ③ Mail Send Timing
Error Occurrence: Send mail immediately when errors occur.
Optional Timing: Send mail periodically.
Not Send Mail: Do not send mail even when errors occur.
- ④ When “Optional Timing” is selected, select the type of projector information to be sent.

1 Input the mail server address.

2 Input the sender mail address.

3 Make the “Mail Send Timing” setting.

- If you do not want mail to be sent automatically, select “Not Send Mail”.
- If you do want mail to be sent automatically, select “Error Occurrence”.
- When “Error Occurrence” is selected, mail is sent when errors occur on the projector side.

NOTE

- If “Optional Timing” is checked when “Error Occurrence” is selected in step 3 above, projector condition data is sent periodically even if no errors have occurred.

Mail Send Timing

- Select every other day, every other week, every other two weeks or every other month as the timing at which mail is to be sent.
- When “1 day” is selected, mail is received from the projector every other day at 10:00 AM.
- When “1 week” or “2 week” is selected, select the day of the week on which mail is to be sent.
- When “1 month” is selected, select the day of the month on which mail is to be sent.

About the “Condition” check box

Temp: Send data on whether or not the internal temperature is normal.

Fan: Send data on whether or not the cooling fan is normal.

Filter Cover: Send data on whether or not the filter cover is normal.

Lamp: Send information on the accumulated lamp usage time.

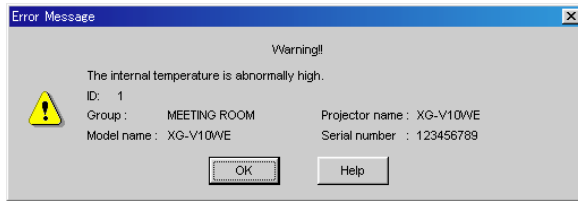
No Response: Send data on whether or not communications with the projector are normal.

Control Setting: Set the projector user setting values (“Contrast”, “Input Select”, etc.) (The user setting values are the same as the values that can be acquired with the “Save Control Setting” function on [page 48](#).)

Error notification function

This software is equipped with a function for automatically notifying the error information when an error arises with the projector.

If a major error arises, a Warning Window is displayed, as shown below.



When the “Help” button is pressed here, the “Help” window opens.

NOTE

If the e-mail address is pre-registered at “Send Mail Setting” ([page 36](#)), the projector information is notified when problems arise or periodically.

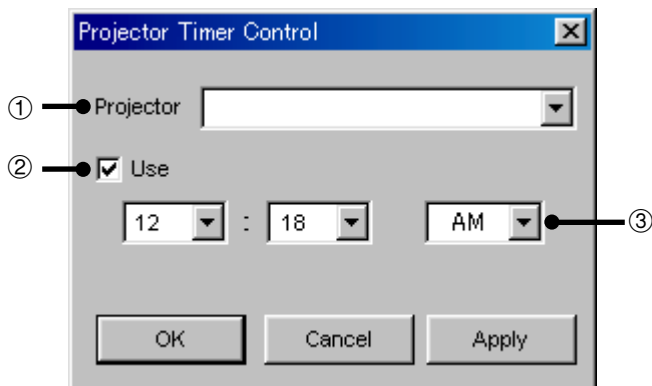
Projector Timer Control

This is a function for turning off the projector's power at the preset time.

NOTE

- This function can only be used when this software is running on a personal computer.
- This function manages the time based on the computer's built-in clock, so it will not operate properly if the computer's clock setting is incorrect.

1 Select "Projector Timer Control" from "Control Option".



- ① Select the projector.
- ② Enable/disable check box
- ③ Set the timer off time.

2 Select the projector to be used with the timer off function.

3 Set the timer off time.

4 To enable the timer function, check the check box.

5 Press the "Apply" button.

Controlling the Projector's Adjustment

Network Control

This function enables you to control the individual projector adjustments from your PC.

Refer to the projector's operation manual for details on each adjustment.

Adjustment	Sheet	Page
Auto Sync	Set Up	42
Black Screen		
Freeze		
Input Select		
Lens		
Power		
Input1/2/3 Gamma		
Input4/5/6 Gamma	Input1 PICT/Input2 PICT/Input3 PICT/	43
Input1/2/3 PICT		
Input1/2 Progressive Mode		
Input1/2/3 Resize		
Input1/2 Signal Type	Fine Sync	44
Auto Sync Display		
Auto Sync Setup		
Input Adjust		
Settings		
Special Modes		
Input4/5/6 PICT	Input4 PICT/Input5 PICT/Input6 PICT	43
Input4/5/6 Progressive Mode		
Input4/5/6 Resize		
Input4/5/6 Signal Type		
Audio Adjust	Audio	45
Mute		
Volume		
Auto Power Off	Options	46
Background Image		
Black Screen Display		
ID No. Display		
Set Inputs		
Lamp Mode		
OSD Display		
PRJ Mode		
Startup Image		
3D DNR		
Video System		

NOTE

- Adjustments can still be made from the **Network Control** utility regardless of the difference in settings in the projector's menu.
- If you move to **Network Control** during **Presentation Transfer**, **Capture & Transfer** or **Gamma Correction**, **Sharp Advanced Presentation Software Professional Edition** automatically confirms the adjustments on the projector and shows them in the **Network Control** window as default settings.
- Also when you change the sheet of the **Network Control** window to proceed to the other projector adjustment, this confirmation is performed. In this case, it will repeat at regular intervals afterwards and the **Network Control** window may show the settings on the projector.
- The Automatic Power Shutoff function will not operate when performing **Network Control**, although you turn **"Auto Power Off"** ON in the **"Options"** sheet. This function operates during **Presentation Transfer**, **Capture & Transfer**, or **Gamma Correction**.

Before Adjusting

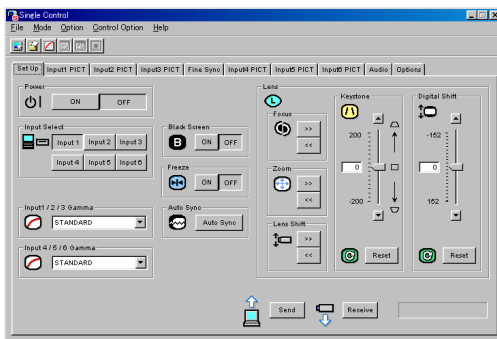
Serial (RS-232C) cable communications is available for this mode. Please connect a serial cable to the projector and the PC (page 8), select the correct COM Port on the PC, then proceed with **Network Control**.

Multiple connections

- 1 Select the individual or group projector on the Multiple Operation Panel.
- 2 Click **"Jump"** on the Multiple Operation Panel.
 - ▶ The **"Multiple Control"** window will open.
- 3 Click the tab of the sheet including your desired adjustment controller.

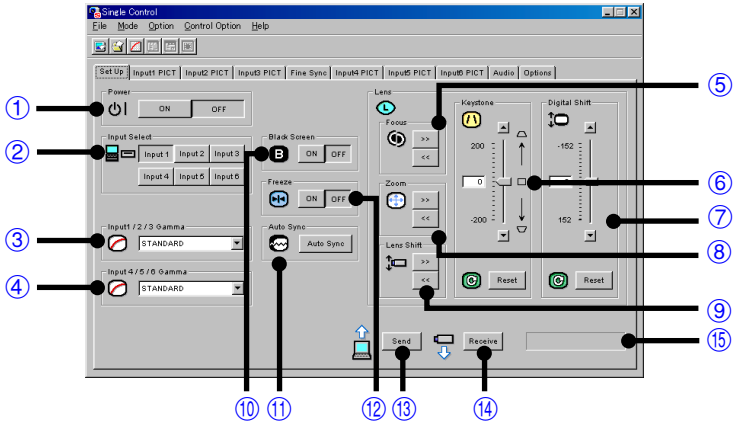
Single Connections

- 1 Select the **"Single Control"** mode.
 - See section **"Opening Modes"** (page 19).
 - ▶ The **"Single Control"** window will open.



- 2 Click the tab of the sheet including your desired adjustment controller.

“Set Up” Adjustment

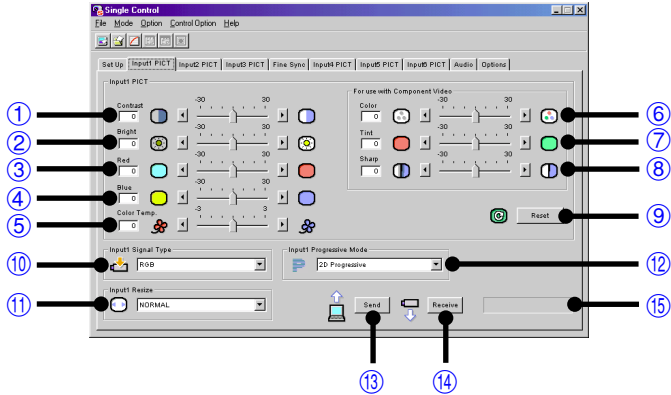


- ① Select the “**Power**” ON/OFF.
- ② Select the “**Input Select**”.
- ③ To make “**Input1/2/3 Gamma**” select
- ④ To make “**Input4/5/6 Gamma**” select
- ⑤ To make “**Focus**” adjustments
- ⑥ To make “**Keystone**” adjustments
Slide the bar to the desired location or simply type in the desired value in the box.
- ⑦ To make “**Digital Shift**” adjustments
- ⑧ To make “**Zoom**” adjustments
- ⑨ To make “**Lens Shift**” adjustments
- ⑩ Select the “**Black Screen**” ON/OFF.
- ⑪ To start “**Auto Sync**”
Press the “**Auto Sync**” button.
- ⑫ Select the “**Freeze**” ON/OFF.
- ⑬ To send all the adjustment data to the projector
Press the “**Send**” button to control all the adjustments on this sheet.
- ⑭ To receive data from the projector
Press the “**Receive**” button to confirm the adjustments on the projector.
- ⑮ A “**NOW TRANSMITTING...**” message is displayed during transmission.

“Input1/2/3/4/5/6 PICT” Adjustment

NOTE

- For “Input1/2 PICT” adjustment, “Color”, “Tint” and “Sharp” adjustments are available for component input signal only. (“Sharp” adjusts DVD 480i signal only.)
- For “Input3 PICT” adjustment, only “Input3 Resize” can be used with digital signal inputs.



Adjusting and Controlling

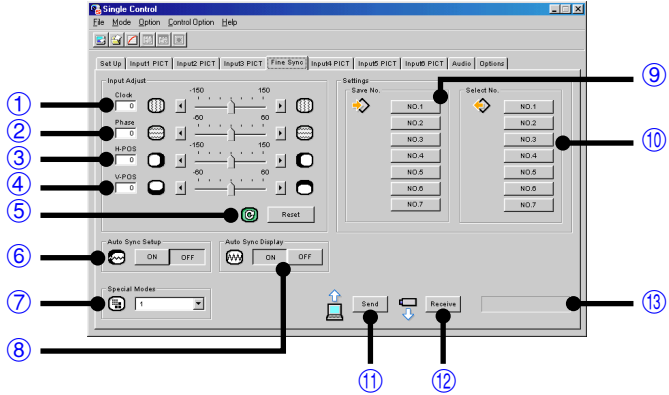
① to ⑧: Slide the bar to the desired location or simply type in the desired value in the box.

- ① To make “**Contrast**” adjustment
- ② To make “**Bright**” adjustment
- ③ To make “**Red**” adjustment
- ④ To make “**Blue**” adjustment
- ⑤ To make “**Color Temp**” adjustment
- ⑥ To make “**Color**” adjustment
- ⑦ To make “**Tint**” adjustment
- ⑧ To make “**Sharp**” adjustment
- ⑨ To reset the adjustments ① to ⑧
Press the “**Reset**” button.
- ⑩ To make “**Signal Type**” select.
- ⑪ To make “**Resize**” select
Select a size mode from the pull down menu. It will change the pixel composition to resize the picture on the screen.
- ⑫ To select “**Progressive Mode**”
- ⑬ To send all the adjustment data to the projector
Press the “**Send**” button to control all the adjustments on this sheet.
- ⑭ To receive data from the projector
Press the “**Receive**” button to confirm the adjustments on the projector.
- ⑮ A “**NOW TRANSMITTING...**” message is displayed during transmission.

“Fine Sync” Adjustment

NOTE

“Fine Sync” adjustment is not necessary except “Auto Sync Setup” and “Special Modes” with Input3 (DVI) mode (The “Input Adjust” and “Settings” items cannot be adjusted.).



① to ④: Slide the bar to the desired location or simply type in the desired value in the box.

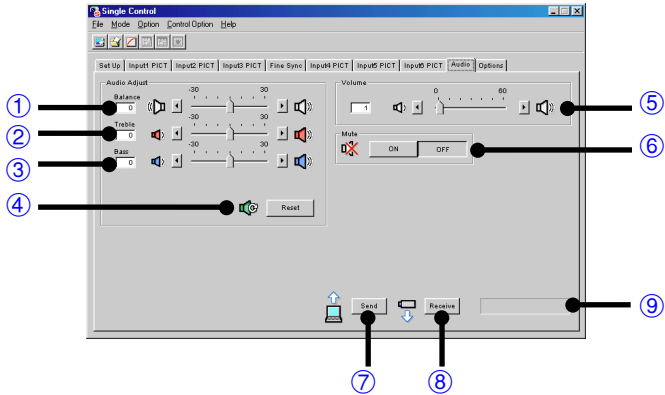
- ① To make “Clock” adjustment
- ② To make “Phase” adjustment
- ③ To make “H-POS” adjustment
- ④ To make “V-POS” adjustment
- ⑤ To reset all the adjustments ① to ④
Press the “Reset” button.
- ⑥ To select the “Auto Sync Setup” ON/OFF.
“ON” is for “Auto Sync” whenever the projector is powered or the input signal is changed.
- ⑦ To select the “Special Modes”
- ⑧ To make “Auto Sync Display” ON/OFF.
“ON” is for displaying Background Image during “Auto Sync”.
- ⑨ To store up to seven adjustment settings for use with various computers
Connect a PC to the projector and make the adjustments in “Input Adjust”. And then press one of the “Save No.” buttons to save the adjustment setting.

NOTE

- Make a note of the “Save No.” and its stored setting, if necessary. You cannot check each setting with this software after saving it.
- The previous setting will be overwritten if you save on the same “Save No.” button.
- ⑩ To select the desired adjustment setting for the currently connected PC
Press the desired “Select No.” button.

Refer to ⑬, ⑭, ⑮ on page 43 about the function of ⑪, ⑫, ⑬ on this page.

“Audio” Adjustment



①, ②, ③ and ⑤: Slide the bar to the desired location or simply type in the desired value in the box.

- ① To make “**Balance**” adjustment
- ② To make “**Treble**” adjustment
- ③ To make “**Bass**” adjustment

④ To reset the adjustments ①, ② and ③
Press the “**Reset**” button.

- ⑤ To make “**Volume**” adjustment
- ⑥ Select the “**Mute**” ON/OFF.

⑦ To send all the adjustment data to the projector

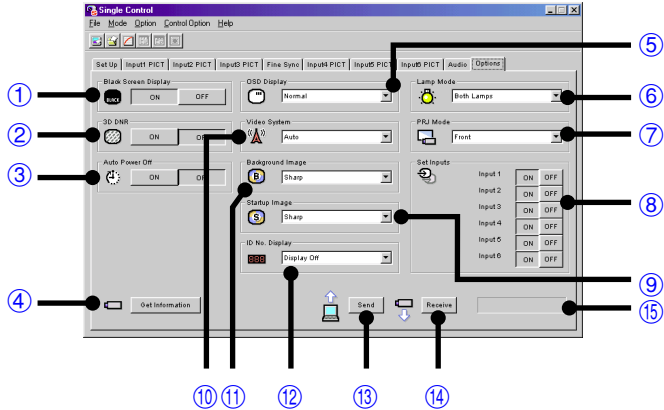
Press the “**Send**” button to control all the adjustments on this sheet.

⑧ To receive data from the projector

Press the “**Receive**” button to confirm the adjustments on the projector.

⑨ A “**NOW TRANSMITTING...**” message is displayed during transmission.

“Options” Adjustment



① to ③ and ⑧: Select ON/OFF.

- ① To make “**Black Screen Display**” ON/OFF
“ON” is for displaying “BLACK SCREEN”.
- ② To make “**3D DNR**” ON/OFF
- ③ To make “**Auto Power Off**” (Automatic Power Shutoff) ON/OFF

NOTE ➤

The Automatic Power Shutoff will not operate when performing **Network Control**, although you set it “ON”. This function operates during **Presentation Transfer, Capture & Transfer, or Gamma Correction**.

④ See the next page

⑤ to ⑦, ⑨ to ⑫: Select a mode from the pull down menu.

- ⑤ To make “**OSD Display**” select
- ⑥ To make “**Lamp Mode**” select
- ⑦ To make “**PRJ Mode**” select
- ⑧ To make “**Set Inputs**” ON/OFF from Input 1 to 6
- ⑨ To make “**Startup Image**” select
- ⑩ To make “**Video System**” select
- ⑪ To make “**Background Image**” select
- ⑫ To make “**ID No. Display**” select
- ⑬ To send all the adjustment data to the projector

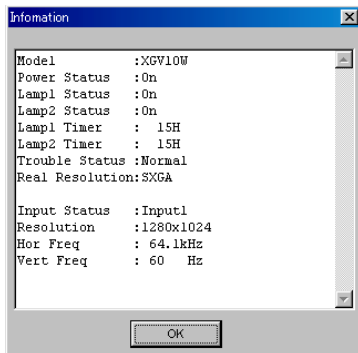
Press the “**Send**” button to control all the adjustments on this sheet.

⑭ To receive data from the projector

Press the “**Receive**” button to confirm the adjustments on the projector.

⑮ A “**NOW TRANSMITTING...**” message is displayed during transmission.

- ④ Press the **“Get Information”** (Lamp & Signal information) button to open the **“Information”** window.



“Model”

Shows the model number of the projector.

“Power Status”

On: The power is on.

Off: The power is off.

Cooling: The power is off with the cooling fan turning. Do not disconnect the power cord during “Cooling”.

“Lamp Status”

On: The lamp is on.

Off: The lamp is off.

Retry: Retrying to turn on the lamp.

Wait: The lamp is on standby.

“Lamp Timer”

Shows the accumulated lamp usage time. It will be reset when replacing the lamp.

“Trouble Status”

Temp.: The internal temperature is abnormally high. Something may block air intake.

Fan: The filter cover is open. Securely install the filter cover.

Lamp: The lamp has a problem.

Normal: Displayed in the normal operating condition.

“Real Resolution”

Shows the resolution of the projector’s panel.

“Input Status”

Input1/Input2/Input3/Input4/Input5/Input6

“Resolution” (Displayed for Input1/2/3)

Shows the resolution of the image when projected on the screen.

“Hor Freq” (Displayed for Input1/2/3)

Shows the horizontal frequency (kHz).

“Vert Freq” (Displayed for Input1/2/3)

Shows the vertical frequency (Hz).

“Video System” (Displayed for Input 4/5)

Shows the video input system (NTSC or PAL etc.). The “---” will be displayed when it is a monochrome or there is no signal. For a forced system, a “*” will lead the system name.

Save Control Setting and Load Control Setting

You can save all the current **Network Control** settings of the projector in your PC (**Save Control Setting**) and also load the **Network Control** values saved in the PC to the projector (**Load Control Setting**).

To make “Save Control Setting”

Click the “File” menu to select “Save Control Setting”.

All the current **Network Control** settings of the projector will be saved in the SAPS folder on the PC.

To make “Load Control Setting”

Click the “File” menu to select “Load Control Setting”.

The **Network Control** values will be loaded to the connected projector.

NOTE


- You cannot use this function when “XGNV1-5” is selected in “Projector” dialogue box.
- The projector must be identical for the “Save Control Setting” and “Load Control Setting”.

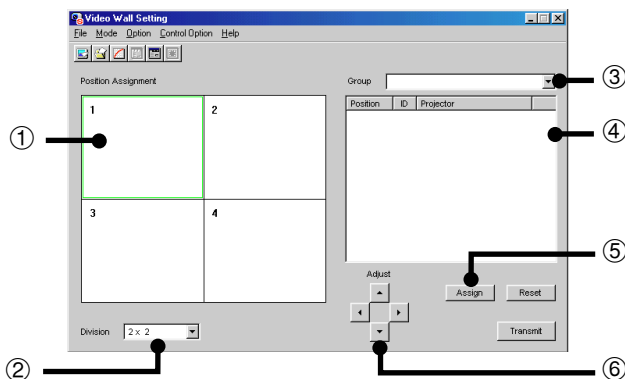
Video Wall Setting

With this software, the image of the connected projectors can be divided from 2×2 to up to 8×8 to create a video wall.

NOTE

This function can not be available when the UXGA signal is displayed.

- 1 Click “Video Wall Setting” from the “Mode” menu.
You can also select “Video Wall” by clicking the  icon.
▶ The “Video Wall Setting” window will open.



- ① Area assigned to the selected projector
- ② Select “Division” from 2×2 , 3×3 , 4×4 , 5×5 , 6×6 , 7×7 , 8×8 , 4×3 (Wide screen) or 8×6 (Wide screen).
- ③ Select “Group Name”.
- ④ Projector selection area
- ⑤ Assign the projector.
- ⑥ Adjust: The position of the assigned projector can be adjusted in the horizontal (H) and vertical (V) directions by clicking ▲, ▼, ◀ and ▶.

- 2 Select the group.
- 3 Select “Division”.
- 4 Select the position to assign at “Position Assignment”.

NOTE

For the relationship between the position assigned here and the actual position of the projector, see “Projector image assignment with the Video Wall Setting” on the following page.

- 5 Select the projector at ④.
- 6 Press the “Assign” button.

The projector is assigned as a video wall component.
To fine-adjust the vertical and horizontal position, click ▲, ▼, ◀ and ▶ at “Adjust”.

To reset the current assignment settings

Click "Reset" after selecting the group.

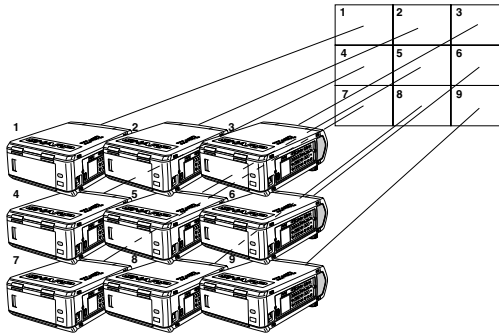
NOTE

The projector forming a video wall must belong to a group. To assign a projector not belonging to a group, add the projector to one of the groups. (See page 30.)

Projector image assignment with the Video Wall Setting

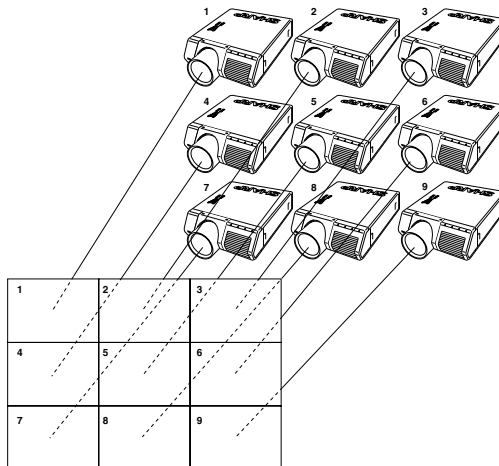
The projector image assignment for front projection and rear projection is as shown below.

Front projection



1 to 9 correspond to position numbers on the Screen.

Rear projection



1 to 9 correspond to position numbers on the Screen.

Gamma Correction

Changing the gamma value adjusts the tone of an image on the screen.

NOTE

This function can only be available in the “Single Projector Operation Mode”.

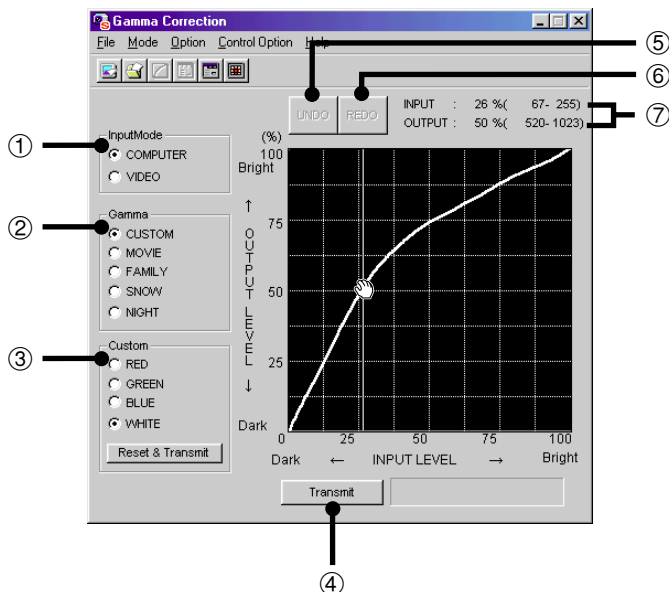
Before Adjusting

- Use the projector’s Gamma button and set the CUSTOM mode.
- Infrared communications (IrCOM) cannot be used when performing gamma correction. Please connect a serial cable or LAN cable to the projector and the PC (page 8), then proceed to **Gamma Correction**.

1 Select the “Gamma Correction” mode.

See section “Opening Modes” (page 19).

- ▶ The “Gamma Correction” window opens.



- ① Specify the source of the image. The default setting is “COMPUTER”
- ② The default gamma value is “CUSTOM”, by which you can adjust the values of the colours in box ③.

The other modes use preset values and you cannot adjust colours independently in these modes.

“MOVIE”: Emphasizes colour saturation of the entire image.

“FAMILY”: Emphasizes colour saturation of flesh tones.

“**SNOW**”: Emphasizes white colour in an image.

“**NIGHT**”: Emphasizes dark scenes or colours in an image.

- ③ When “**CUSTOM**” is selected in box ②, each of these colours except “**WHITE**” can be adjusted respectively. As you adjust “**WHITE**”, the values of the other three colours will be offset.

NOTE 

The “**Reset & Transmit**” button resets the values of the colour currently selected. If you want to reset both the red and green values, click the “**Reset & Transmit**” button in the “**RED**” mode, and then click the “**Reset & Transmit**” button again in the “**GREEN**” mode. If you want to reset to the original values, click the “**Reset & Transmit**” button in the “**WHITE**” mode.

- ④ To send all the adjustment signals to the projector
⑤ To restore to the previous status after operating the gamma data.
⑥ To restore the status before the “**UNDO**” button was clicked.
⑦ Gamma coordinate display (INPUT/OUTPUT)

2 Select the “**InputMode**”.

3 Select “**CUSTOM**” or one of the other modes.

- ▶ When selecting the “**MOVIE**”, “**FAMILY**”, “**SNOW**”, or “**NIGHT**” mode, the “**NOW TRANSMITTING...**” message is displayed during transmission.

4 When selecting “**CUSTOM**”, adjust the values of each colour.

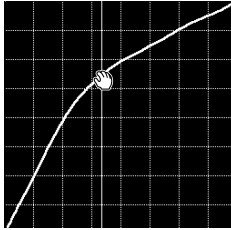
Drag and drop the curve of the graph to adjust it to the proper value.

5 Click “**Transmit**”.

- ▶ The “**NOW TRANSMITTING...**” message is displayed during transmission.

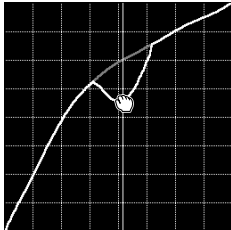
Adjusting the GAMMA curve

- 1 Repeat steps 1-4 of “Gamma Correction”.**
- 2 Place the mouse pointer over the gamma curve.**



The mouse pointer takes the shape of an open hand.

- 3 Drag the gamma curve.**



The mouse pointer takes the shape of a closed hand and the curve changes.

The same operation is possible using the up and down arrow keys on the keyboard.

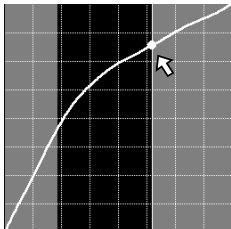
Setting the gamma correction area

You can set the gamma correction area by using Drag and Drop. The gamma curve and mouse pointer moves within the set range after setting the gamma correction area.

The gamma correction area can also be set by using the right and left arrow keys on the keyboard while pressing the shift key.

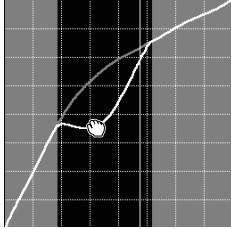
- 1 Drag the mouse pointer, then drop it.**

The point at which the mouse pointer is released is set as the correction area.



2 Drag and drop the gamma curve.

Gamma curve or mouse pointer moves within the set range.



NOTE

- To restore to the previous status after operating the gamma data, click the “UNDO” button.
- To restore to the status before the “UNDO” button was clicked, click the “REDO” button.

Saving the gamma correction settings

- 1 Select “File”, then select “Save GAMMA Data”.
 - ▶ This opens the “Save As” dialogue box.
- 2 Specify a “File name”.
- 3 Specify a “Save In” location.
- 4 Click “Save”.

The current gamma correction settings of the projector will be saved.

Loading the gamma correction settings

- 1 Select “File”, then select “Load GAMMA Data”.
 - ▶ This opens the “Open” dialogue box.
- 2 Specify a file location in “Look in”.
- 3 Specify a “File name”.
- 4 Specify a “Files of type”.
- 5 Click “Open”.

The gamma correction values will be loaded to the connected projector.

Setup for Transferring Images

Changing Compression Rate

When transferring a BMP image file by **Presentation Transfer** or **Capture & Transfer**, you can change compression rates.

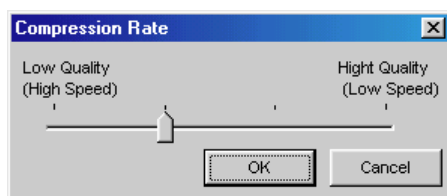
NOTE 

This mode cannot be used with the XG-V10W.

Compression rate

- The default setting for image quality is “middle”.
- If you are transmitting the custom Image (BMP) used as **Startup Image** and **Background Image**, the image is automatically transmitted as “High quality, slow transmission” for best results. The BMP file will be transferred without any conversion to minimize the loss of image quality.
- If adjusted, the compression rate will be saved in each image folder as a file. And the converted files remain in the folder so that the conversion time can be shortened thereafter.

- 1 Click the “Option” menu, select “Compression Rate...”.



**Faster transmission
but poorer image
quality**



**Better image quality
but slower transmission**

- 2 Drag and drop the pointer to the rate position you desire.
- 3 Click “OK”.
 - ▶ The compression rate in the selected folder will be changed.

Transferring Images

Presentation Transfer

This mode makes it possible to transfer images saved as BMP or JPEG files to the projector. A preview of the slides in the file folder selected is displayed on the PC monitor.

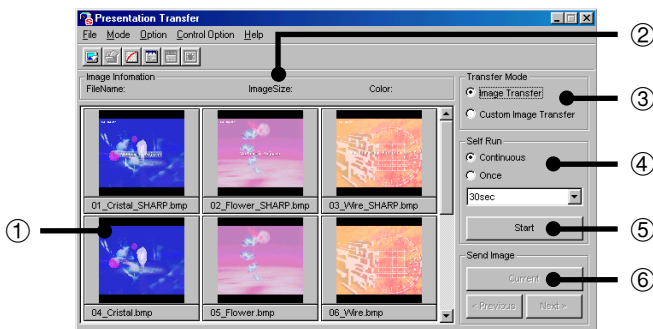
NOTE

- The XG-V10W does not support JPEG image transfer.
- This function can only be available in the “Single Projector Operation Mode”.
- If you use the NV-5/6/7, infrared communications can be available.

Before Presentation

- Save the slides as BMP files. The image size must be 1280 × 1024 or lower.

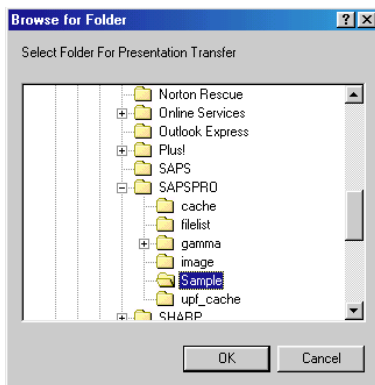
- 1 Select the “Presentation Transfer” mode.
See section “Opening Modes” (page 19).
▶ The “Presentation Transfer” window will open.



- ① Images in the selected folder (step 3)
- ② Information of the selected image
- ③ Selecting the type of “Transfer Mode” (step 4)
- ④ Selecting the Presentation Method
- ⑤ Starts the “Self Run” transfer (page 59).
- ⑥ “Send Image” Transfer (page 58).

2 Click the “File” menu, and select “Open...”.

► The “Browse for Folder” window will open.



3 Select the folder in which the image files (Presentation Slides) are saved. And click “OK”.

► The images in the selected folder are previewed in the “Presentation Transfer” window.

NOTE ►

If the size of image does not fill the box (800 × 500), the image will be displayed with black space. However, the software will transfer the image at the original resolution.

4 Select “Image Transfer” in “Transfer Mode”.

NOTE ►

For details of the “Custom Image Transfer”, see [page 63](#).

5 On the projector side, the screen is automatically set to the Custom mode.

To restore to the previous screen, (INPUT1~6) press input selector key INPUT/select button.

NOTE ►

- **For NV5/6/7 users:**
The projector must be in IrCOM mode to receive the images. Press the “IrCOM” button on the projector or the remote control.
- For the “Self Run” transfer, skip over here to section “To send all the images (“Self Run”)” on [page 59](#).

To send a single image (“Send Image”)

1 Select an image in the “Presentation Transfer” window to transfer.

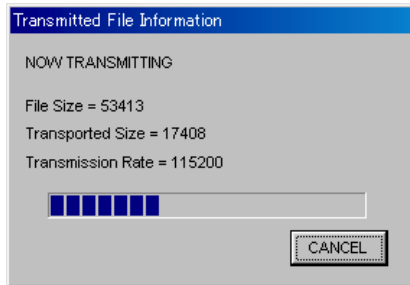
If you want to change the compression rate, see the section “Changing Compression Rate” ([page 55](#)).

NOTE

- The compression rate is applied to all the images in the selected folder.
- Changing the compression rate will change the image picture quality and transfer speed.

2 Click the “Current” button in the “Send Image” box.

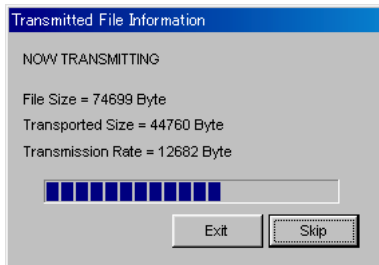
- ▶ The “Transmitted File Information” dialogue box appears and the transfer begins. If you want to stop the transfer, click “CANCEL”.



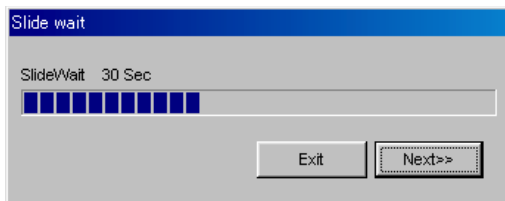
- ▶ To send the next image, click the “Next>” button in the “Send Image” box.
- ▶ To send the previous image, click the “<Previous” button in the “Send Image” box.
- ▶ The default order of images follows the file name.
You can change the order of the image files by dragging and dropping them to the desired location.

To send all the images (“Self Run”)

- 1 Select the desired method in “Self Run”.**
“Continuous” sends all images in the specified folder endlessly.
“Once” sends all images in the specified folder once.
- 2 Select the interval to send images in “Self Run”.**
You can select it in the range from 30 seconds to 5 minutes fixed in units of 15 seconds.
- 3 After step 4 on page 57, press the “Start” button in the “Self Run” box of the “Presentation Transfer” window.**
 - ▶ The “Transmitted File Information” dialogue box will appear and the transfer will begin. If you want to stop the transfer, click “Skip”.



- ▶ After the transfer is completed, the “Slide wait” dialogue box will appear until the image will be projected on the screen. If you want to cancel the interval and soon show the next image, click “Next>>”.



- ▶ To cancel **Self Run**, click “Exit”.

Capture & Transfer

This mode allows you to transfer an image of what is currently displayed on the PC monitor.

NOTE

- This mode can only be available in the “Single Projector Operation Mode”.
- If you use the NV-5/6/7, infrared communications can be available.

Before Presentation

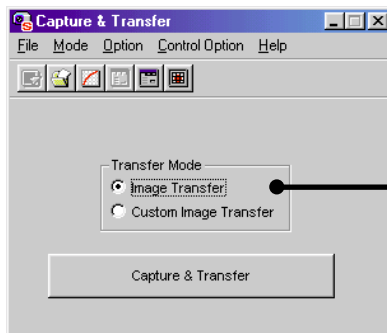
- This function is not available for full screen slides (e.g. the “Slide Show” mode of Microsoft PowerPoint).
For full screen slides to use **Capture & Transfer**, see the section “Quick Transfer” (page 62).

1 Display the image you want to transfer.

2 Select the “Capture & Transfer” mode.

See section “Opening Modes” (page 19).

- ▶ The “Capture & Transfer” window will open.



Selecting the type of “Transfer Mode” (step 3)

3 Select “Image Transfer” in “Transfer Mode”.

If you want to change the compression rate, see the section “Changing Compression Rate” (page 55).

NOTE

- For the details of the “Custom Image Transfer”, see page 63.
- Changing the compression rate will change the image picture quality and transfer speed.

On the projector side, the screen is automatically set to the CUSTOM mode.

NOTE 

For NV5/6/7 users:

The projector must be in IrCOM mode to receive the images. Press the “IrCOM” button on the projector or the remote control.

4 Click the “Capture & Transfer” button in the “Capture & Transfer” window.

- ▶ The “**Capture & Transfer**” window disappears and capturing begins.
- ▶ After capturing is completed, the “**Capture & Transfer**” window reappears and transfer of the captured image begins.
- ▶ The “**Transmitted File Information**” dialogue box appears. If you want to stop the transfer, click “**CANCEL**”.

To send another image

Change the displayed image on the PC monitor and then repeat step 4.

Quick Transfer

Applying the preset compression rate, this mode allows you to transfer images by simple steps.

NOTE ➤

- This mode cannot be used with the XG-V10W.
- This mode transfers images under the following settings which cannot be modified.

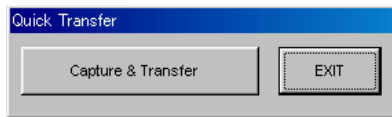
- Normal picture quality
- Compression rate: Middle

The custom image used as **Startup Image** and **Background Image** cannot be transferred by this mode.

Before Presentation

- Confirm that the “**Auto-Launch**” setting is “**ON**” (page 21) or the software is active.
- This function is available for full screen slides (e.g. the “**Slide Show**” mode of Microsoft **PowerPoint**).

- 1 Display the image you want to transfer.**
- 2 Keep the right mouse button depressed for 2 seconds.**
The position of the pointer can be anywhere on the display.
▶ The “**Quick Transfer**” window opens.



On the projector side, the screen is automatically set to the custom mode.

NOTE ➤

For NV5/6/7 users:

The projector must be in IrCOM mode to receive the images. Press the “IrCOM” button on the projector or the remote control.

- 3 Click the “Capture & Transfer” button in the “Quick Transfer” window.**
 - ▶ The capturing begins.
 - ▶ The “**Transmitted File Information**” dialogue box appears and the transfer of the captured image begins.
If you want to stop the transfer, click “**CANCEL**”.
 - ▶ After the transfer is completed, the “**Transmitted File Information**” dialogue box disappears.
- 4 Click “EXIT” in the “Quick Transfer” window.**

To send another image

Change the displayed image on the PC monitor and repeat from step 2.

Saving a Custom Image as Startup Image and Background Image

The projector has an option to display a custom image (e.g. your company logo) upon startup of the projector (**Startup Image**) or when there is no signal (**Background Image**).

You can choose your custom image from the projector's mode menu. Refer to the projector's operation manual for how to set **Startup Image** and **Background Image**.

The following is the procedure for saving the custom image on the projector.

NOTE

- The custom image used as **Startup Image** and **Background Image** must be a 1280 × 1024 or lower sized 256 colour BMP file.
- If the pallet uses over 240 colors with 256 colour BMP files, the image is automatically converted within the projector's number of colour limits.
- 24-bit colour BMP files are converted into 256 colors.
- Selecting and leading the custom image file as **Startup Image** and **Background Image** can be done by **Presentation Transfer** or **Capture & Transfer**.

Select “**Custom Image Transfer**” in “**Transfer Mode**” of the “**Presentation Transfer**” window or of the “**Capture & Transfer**” window.

Refer to “Transferring Images” (page 56) for how to transfer the image.

NOTE

The “**Custom Image Transfer**” mode saves one image file only and overwrites the previously transferred image if you send another image file.

To avoid erasing the custom image, you should change the transfer mode to “**Image Transfer**” after sending the custom image.

Unable to transfer images or an error occurs with communication

- ◀ Check that the connection type is surely selected as you intend.
- ◀ Check that the image size is 1280 × 1024 or lower.

In case of cable communications (RS-232C and LAN)

- ◀ Check whether the transmission speed set at “Projector Setting” or “Scan Setting” is the same as the transmission speed set at “RS-232C” on the projector’s OSD menu.
- ◀ Check that the port for the RS-232C serial cable or LAN cable is correctly specified in the PC’s settings.
- ◀ Check that the cable is correctly and securely connected ([page 9](#)).

In case of infrared communications (IrCOM)

- ◀ Check that the infrared ports (the projector and the PC) are within 1 meter (3 ft.) distance and keep the vertical and horizontal range within 30 degrees.
- ◀ Check that there are no obstacles between the projector and the PC.
- ◀ Avoid using this function under strong lighting conditions. Strong light sources such as sunlight or fluorescent lighting may interfere with image transmissions.
- ◀ Check that the projector is in the IrCOM mode before transferring images from the PC. (See the projector operation manual.)
The On-screen Display “**IrCOM stand by**” or “**IrCOM stand by Waiting for Data**” will appear on the projection screen.
- ◀ Check that your PC’s IrDA port is activated and configured properly. Check the PC’s instruction manual.
- ◀ Check that “Connection Type” in Single Projector Setting ([page 27](#)).
- ◀ Confirm that the port for infrared communications is correctly specified in the PC’s settings.
- ◀ For Windows 95 users: Check that Microsoft’s IrDA 2.0 (Infrared Driver) is installed ([page 7](#)).
- ◀ Check that the display mode is appropriate for the images. (Normal transfer: 24 bit colour or less; “startup Image” transfer: 256 colours for BMP files)
- ◀ Infrared communications (IrCOM) cannot be used with Windows NT.

“Gamma Correction”/“Network Control” is not operating properly

- ◀ Reconnect the RS-232C serial cable or LAN cable and try again. The cable may not be connected properly or an error may have occurred during the transmission.
- ◀ Check that the port for serial (RS-232C) communications is correctly specified in the PC's settings ([page 24](#)).
- ◀ Projector may not be receiving command because of the projector's setting. Please check the projector's “**ON/OFF**” status, “**INPUT SELECT**” status (**COMPUTER, VIDEO**) or the input signal. Resend the command after adjusting these items.
- ◀ Before **Gamma Correction**, use the projector's Gamma button and set the CUSTOM mode.

The transmitting speed is low

- ◀ Do not use the projector's remote control while transferring.
- ◀ Check the compression rate setting ([page 55](#)).
- ◀ Check the Transmission Speed setting, in the case of RS-232C cable communications ([page 25](#)).
- ◀ Note that custom image as **Startup Image** and **Background Image** is fixed in the “High quality, slow transmission” setting.
- ◀ Note that **Quick Transfer** is fixed in the “Normal quality, middle speed” setting.
- ◀ Check that your PC supports IrDA 1.1.
- ◀ Check the transmitting speed from your PC. If the speed is 4 Mbps, check that an IrDA 1.1 driver is installed ([page 7](#)). Refer to the PC's instruction manual.

If 4 Mbps IrDA should fail

- ◀ If 4 Mbps IrDA should fail, try transmitting at 115 kbps. The following is the procedure to change the transmitting speed.
 - 1) Click the Windows “**Start**” button and then select “**Settings**”.
 - 2) Select “**Control Panel**”.
 - 3) Double click the “**Infrared Monitor**” icon.
 - 4) Click the “**Options**” tab.
 - 5) Select “**Limit connection speed to**” and change it to 115kbps.

Unable to save the startup image

- ◀ Do not turn off the projector while transmission.
The image data may be lost.

Quality of the image is low

- ◀ Check the compression rate setting ([page 55](#)).
- ◀ Note that **Quick Transfer** is fixed in the “Normal quality, middle speed” setting.

Unable to speed up the transfer or improve the image quality

- ◀ If the image file is saved in JPEG format, its compression rate cannot be changed.
Note that the compression rate only applies to BMP file format.

Unable to speed up “Gamma Correction” though the transmitting speed was changed

- ◀ The transmitting speed setting applies to image transfer via cable only. The speed for transfer of gamma values is fixed at 9,600 bps.

Table of Functions by Model

The table below shows the available function for other projector.

× : Signifies available function

- : Signifies unavailable function

		V10W			P10X, C30X		NV5-7		NV1-4	
		Single	Multi		Single	Multi	Single	Multi	Single	Multi
			No ID	ID						
Serial(RS-232C)	Network Control	×	×	×	×	×	×	×	×	×
	Gamma Correction	×	-	-	×	-	×	-	-	-
	Presentation	×	-	-	×	-	×	-	-	-
IrCOM(IrDA)	Network Control	-	-	-	-	-	-	-	-	-
	Gamma Correction	-	-	-	-	-	-	-	-	-
	Presentation	-	-	-	-	-	×	-	-	-
LAN	Network Control	-	-	×*1	-	-	-	-	-	-
	Gamma Correction	-	-	-	-	-	-	-	-	-
	Presentation	-	-	-	-	-	-	-	-	-

*1: with Optional Expansion Board

MENU		V10W			P10X, C30X		NV5-7		NV1-4	
File										
	Open	×	×	×	×	×	×	×	×	×
	Operation Mode Setting	×	×	×	×	×	×	×	×	×
	Projector Setting	×	×	×	×	×	×	×	×	×
	Scan Setting	-	-	×	-	-	-	-	-	-
	Save Control Setting	×	×	×	×	×	×	×	×	×
	Load Control Setting	×	×	×	×	×	×	×	×	×
	Save Gamma Data	×	×	×	×	×	×	×	-	-
	Load Gamma Data	×	×	×	×	×	×	×	-	-
	Exit	×	×	×	×	×	×	×	×	×
Mode										
	Capture & Transfer	×	-	-	×	-	×	-	-	-
	Presentation Transfer	×	-	-	×	-	×	-	-	-
	Gamma Correction	×	-	-	×	-	×	-	-	-
	Single Control	×	-	-	×	-	×	-	×	-
	Multiple Control	-	×	×	-	×	-	×	-	×
	Video Wall Setting	-	-	×	-	-	-	-	-	-
Option										
	Auto-Launch ON / OFF	×	×	×	×	×	×	×	×	×
	Compression Rate	-	-	-	×	×	×	×	-	-
Control Option										
	Projector Timer Control	-	×	×	-	×	-	×	-	×
	Password	×	×	×	×	×	-	-	-	-
	Keylock Level	×	×	×	×	×	-	-	-	-
	Projector / Unique Name	×	×	×	-	-	-	-	-	-
	Group Setting	-	-	×	-	-	-	-	-	-
	Mail Address Book	-	×	×	-	×	-	×	-	×
	Send Mail Setting	-	×	×	-	×	-	×	-	×
	Error Log Viewer	-	×	×	-	×	-	×	-	×
	Configuration	-	×	×	-	×	-	×	-	×

*1ID setting can be available for V10W only

Glossary

Word	Explanation	Page
About This Software	Version information	22
Auto-Launch ON/OFF	Specify if this software launches automatically upon startup	21
AV Mute	Function turning both “Black Screen” and “Mute” on.	28
Background Image	Image displayed when no signal is input. With the XG-V10W, same as startup image.	63
BMP	Image file format	2
Capture & Transfer	Transfer an image of what is currently displayed on a monitor.	60
COM	Communication port	8
Compression Rate	Rate of compression of the images transmitted from a PC to the projector	55
Custom Image	General term for background image and startup image	63
Custom Image Transfer	Transfer the custom image to the projector. (Unless the custom image is transferred again (overwritten), the screen is retained in the projector’s memory.)	63
Drag & Drop	Select an item and modify it using the mouse.	53
Error Log Viewer	Browse the log of errors generated in the multiple projector operation mode.	38
Exit	Exit from this software	22
File	Main menu item	22
Gamma	Projector’s specific values of specified colours	51
Gamma Correction	Adjust the projector’s gamma values from PC	51
Group Setting	Make the settings for controlling groups of projectors in the multiple operation mode.	30
Help	Help in using this software	22
Hub	Network concentrator	8
ID	For specifying the individual projectors when controlling multiple projectors simultaneously.	23
Image Transfer	Transfer the image to the projector. (Unlike custom image transfer, not stored in projector.)	56
IP	Abbreviation of “Internet Protocol”	23
IP Address	Address for specifying computer on network.	23
IrCOM	Sharp infrared wireless communication	7
IrDA	Abbreviation of “Infrared Data Association”. Name of infrared communications standardization group and name of standards	7
IrTran-P	Standard format (protocol) for transmission of images	7
JPEG	Abbreviation of “Joint Photographic Experts Group”	2

Word	Explanation	Page
Keylock Level	Set whether to enable or disable operating buttons on projector.	34
LAN	Local Area Network	8
Mode	Main menu item	21
Multiple Control	Simultaneous control of multiple projectors from PC.	28
Multiple Operation Panel	Operating panel for integrated control of projectors in multiple projector operation mode.	28
Open	Open file folder containing images to be transmitted to the projector(for Presentation Transfer)	57
Operation Mode	Set whether to control a single projector or multiple projectors.	20
Option	Main menu item	21
Password	When a password is set, some functions can only be changed by the person with the password.	32
Presentation Transfer	Transfer a series of images (BMP or JPEG) to the projector	56
Projector Name	Names freely given to individual projectors. Unlike "Unique Name", can be changed freely by anyone.	35
Projector Setting	Set the method of communication with the projector.	25
Projector & Unique Name	Make and change the "Projector Name" and "Unique Name" settings.	35
Quick Transfer	Shortcut to transferring an image of what is currently displayed on a monitor	62
RS-232C	Serial interface protocol with which many PCs are equipped.	7
Single Control	Control a single projector from a PC.	41
Scan	Function for searching for all connecting projectors and automatically identifying them.	23
Scan Setting	Set the COM port and IP address for searching with the scan function.	23
Self Run	Scan slides in a specified folder one after another to the projector	59
Serial Number	Serial numbers assigned to individual projectors	23
Startup Image	Image displayed when projector turned on With the XG-V10W, same as background image.	63
Transfer Mode	Change the function from "Custom image Transfer" and/or "Image Transfer"	63
Transmission Speed	Transmission speed via the projector's RS-232C port and PC's serial port.	23
Unique Name	Names given to individual projectors. Unlike "Projector Name", when the password setting is set, can only be changed by person with password.	35

Services

Please contact nearest Sharp dealer if there are any problems.

For user purchased the projector in following countries, you can contact to the addresses shown if you have problems.

USA	Sharp Electronics Corporation 1-800-BE-SHARP (1-800-237-4277) lcdsupport@sharplcd.com http://www.sharp-usa.com/
Canada	Sharp Electronics of Canada Ltd. Sharp Customer Care Center (905) 568-7140 (Local) or 877-742-7722(toll free) http://www.sharp.ca
Mexico	Sharp Electronics Corporation Mexico Branch Servicio al cliente llame: SHARP GENIAL Respuestas inmediatas (525) 716-9000
Germany	Sharp Electronics (Europe) GMBH 01805-234675 http://www.sharp.de
U.K.	Sharp Electronics (U.K.) Ltd. 0161-205-2333
Australia	Sharp Corporation of Australia Pty.Ltd. 02-9830-4600 02-9672-1216 (Fax) http://www.sharp.net.au
Hong Kong	Sharp-Roxy (Hong Kong) Ltd. 2822-9303 2528-4879 (Fax)
Singapore	Sharp-Roxy Sales (Singapore) Pte., Ltd. 65-4294342 http://www.sharp.com.sg kwee@global.sharp.co.jp
U.A.E.	Sharp Middle East Fze 971-4-81-5311 helpdesk@smef.global.sharp.co.jp
Thailand	Sharp Thebnakorn Co., Ltd. 02-236-0170 02-236-9188 (Fax) http://www.sharp-th.com
Korea	Sharp Electronics Incorporated of Korea (82) 2-3660-2002 (82) 2-3660-2029 (Fax) http://www.sharp-korea.co.kr webmaster@sharp-korea.co.kr

Information

You can see information about **Sharp Advanced Presentation Software Professional Edition** on the following home page.

<http://www.sharp-world.com/projector>

SHARP CORPORATION