

SHARP®



Sharp ***Advanced*** ***Presentation*** ***Software***

OPERATION MANUAL

Version 2.2

Please read operation manual carefully before using your software.

Installing/
Uninstalling

Basic
Operations

Adjusting and
Controlling

Other
Operations

Transferring Images

Troubleshooting

Glossary/
Services

This software is designed for presentations and for enhancement of images projected from SHARP LCD projectors. It includes the following functions:

Projector Control Software:

RS-232C Control

This function allows you to control the projector's functions/adjustments from your PC.

The projector can be controlled from a central PC/CONTROLLER.

Image Enhancement Software:

Gamma Correction

This function allows you to set the projector's Gamma values directly from your PC. The ease of specifying preset values enables very precise custom brightness, contrast and colour adjustments.

Support Software for Presentation Transfer:

Presentation Transfer

This mode transmits **BMP** and **JPEG** images to a projector. By saving presentation slides as BMP or JPEG images you can do an entire presentation with SHARP LCD projectors.

Capture & Transfer

This mode allows you to transmit an image of what is currently displayed on your monitor. This is as simple as pressing the "Capture & Transfer" button in the application.

Quick Transfer

This mode is similar to "Capture & Transfer" but it can be used easily by clicking the "Right" mouse button, even during a Microsoft **PowerPoint** presentation.

NOTE 

This software operates under the Microsoft Windows 95 and 98 operating systems. This manual references only these Microsoft Windows Operating Systems and compatible Mouse devices. For details please refer to the Microsoft Windows operation manual.

Note that **Sharp Advanced Presentation Software** is subject to change without prior notice for upgrading and improvement.

For Your Reference

There are five functions via RS-232C serial port.

If you want to control the projector adjustments from your PC...



RS-232C Control controls the projector adjustments via the RS-232C serial port. (See page 16)

If you want to adjust image colours on the screen...



Gamma Correction controls the image colours via the RS-232C serial port. (See page 28)

If you want to project your presentation slides saved as BMP or JPEG files...



Presentation Transfer transfers images quickly & easily in presentation format. (See page 35)

If you want to project an image of what is currently displayed on your monitor...



Capture & Transfer captures the image on the PC monitor and transfers it to the projector. (See page 39)

If you want to project a single image quickly...



Quick Transfer captures the image on the PC monitor and transfers it to the projector using the mouse as a shortcut. (See page 40)

Contents

Foreword	1
For your reference	3

Installing/Uninstalling

Required Hardware and Software	6
Projector and PC Connections	6
Installing the Software	7
Uninstalling the Software	10

Operations

Starting and Quitting	12
Opening Modes	12
Starting from the “Sharp Advanced Presentation Software” icon in the Windows task tray	12
Starting from the Windows “Start” button	13
Starting from the “Sharp Advanced Presentation Software” shortcut icon on the Windows desktop	13
Changing Auto-Launch Setting	14
When “Auto-Launch ON” is selected	14
When “Auto-Launch OFF” is selected	14
Quitting	14
Help	15
Controlling the Projector’s Adjustment	16
RS-232C Control	16
“Set Up” Adjustment	18
“Input1 PICT”/“Input2 PICT”/“Input3 PICT” Adjustment	19
“Fine Sync” Adjustment	20
“Audio” Adjustment	21
“Options” Adjustment	22
Save Control Settings and Load Control Settings	24
To make “Save Control Settings”	24
To make “Load Control Settings”	24
Password setting	25
Setting the Password	25
Changing the Password	26
Selecting the Keylock Level	27
Adjusting Images	28
Gamma Correction	28
Adjusting the Gamma curve	29
Setting the gamma correction area	30
Saving the Gamma Correction Settings	31
Loading the Gamma Correction Settings	31
Setup for Transferring Images	32
Selecting the Projector	32
Changing Connection Type	32
Changing Compression Rate	33

Saving a Custom Image as Startup Image and Background Image	34
Transferring Images	35
Presentation Transfer	35
To send a single image ("Send Image")	37
To send all the images ("Self Run")	38
Capture & Transfer	39
To send another image	40
Quick Transfer	40
To send another image	41
Troubleshooting	42
Unable to transfer images or an error occurs with communication	42
The functions in this software are not operating properly	42
The transmitting speed is low	42
Unable to save the startup image	42
Quality of the image is low	43
Unable to speed up the transfer or improve the image quality	43
Unable to speed up "Gamma Correction" though the transmitting speed was changed	43
Glossary	44
Services	46

- Microsoft and Windows are registered trademarks of Microsoft Corporation, USA.
- All other brand or product names are trademarks or registered trademarks of their respective holders.
- Great effort has been expended to ensure that the descriptions in this manual are correct. Should you, however, come across an inconsistency, a telephone call or letter to SHARP Corporation noting the questionable area would be highly appreciated.
- This software is the property of SHARP Corporation and all related copyright and other rights belong to SHARP Corporation.
- This manual may not be transferred wholly or in part in any form whatsoever without prior written permission. Uses other than personal use are for copyright reasons not permitted without the written permission of SHARP Corporation.
- SHARP Corporation shall in no event be liable for damages, loss of revenue or third party claims arising from the use of the software.
- Software specifications and the contents of the operation manual are subject to change without prior notice.
- Operating speed may slow down depending on computer operating environment and processing capability.
- The software is based on modules developed by the Independent JPEG Group.
- The software uses LEAD Tools Pro developed by Bunka Orient Corp. and Lead Technologies, Inc.

Required Hardware and Software

Sharp Advanced Presentation Software requires the following hardware and software for operation.

PC running under Microsoft Windows 95 or Windows 98

CPU	233 MHz Pentium or higher is recommended.
Display	A 800 × 600 dot display capable of displaying 65,536 colours or more
Memory	32 MB or more
Hard disk free space	50 MB or more
Interface	An available RS-232C D-Sub 9 pin serial port for transferring images and controlling the projector RS-232C cable (cross type) is required for connecting projector with PC.
CD-ROM drive	

NOTE

We cannot guarantee that the software will operate on computers whose motherboards have been changed or modified, or on computers that the users have configured themselves.

Projector and PC Connections

This software requires the use of RS-232C serial cable. For details on PC connections, refer to the projector's operation manual.

CAUTION

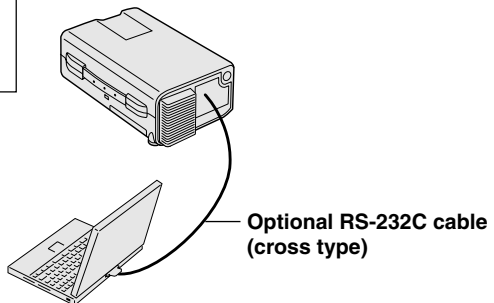
Before connecting, be sure to turn both the projector and the computer off. After making all connections, turn the projector on first. The computer should always be turned on last.

NOTE

Please read the computer's instruction manual carefully.

RS-232C connection

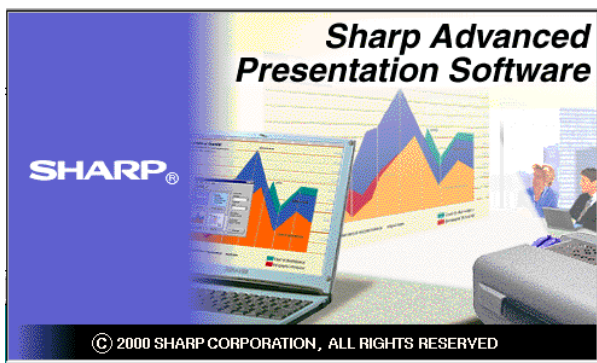
Refer to the projector's operation manual for details.



Installing the Software

This software can be installed using the installation programme supplied on the “**Sharp Advanced Presentation Software CD-ROM**”.

- 1** Insert the “**Sharp Advanced Presentation Software CD-ROM**” in the CD-ROM drive.
- 2** Double click the “**My Computer**” icon.
- 3** Double click the **CD-ROM** drive icon.
- 4** Double click the “**saps2_2**” folder.
- 5** Double click the “**Setup.exe**” icon.
 - ▶ The “**Sharp Advanced Presentation Software Opening Image**” will be displayed.

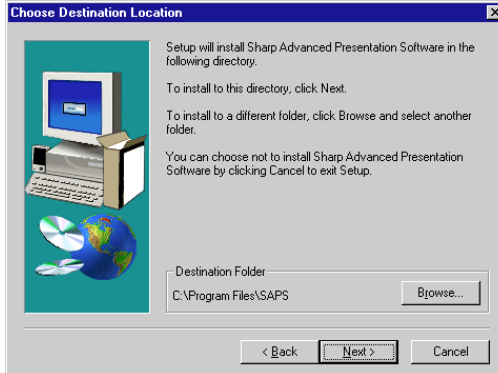


- ▶ The “**Sharp Advanced Presentation Software**” dialogue box will open.



6 Click “Next>”.

- ▶ The “**Choose Destination Location**” dialogue box will open.



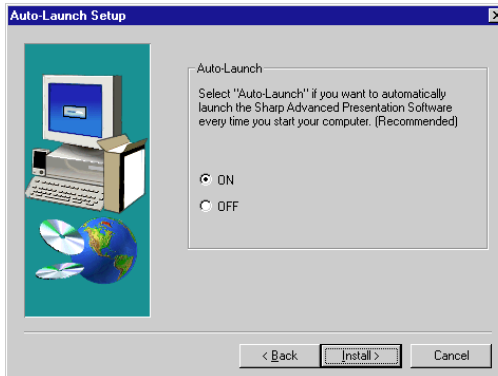
7 The folder under which the software will be installed is displayed in “Destination Folder”.

NOTE

To select another folder, click “**Browse...**”.

8 Click “Next>”.

- ▶ “**Auto-Launch Setup**” dialogue box will open.



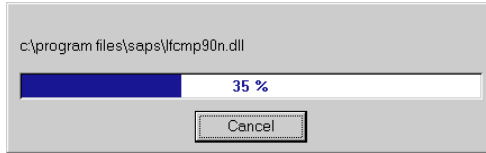
- 9 Click “ON” under “Auto-Launch” to automatically launch the software every time you start your PC. (Recommended)

NOTE

If you set “Auto-Launch ON”, a “**Sharp Advanced Presentation Software**” icon will reside in the Windows task tray. If not, use the “**Sharp Advanced Presentation Software**” shortcut icon on the desktop or the Windows “**Start**” menu.

- 10 Click “Install>”.

► Installation will start.



► When the installation is completed, the “**Setup Complete**” dialogue box will open. To use the programme immediately, please restart your computer.



- 11 Click “Finish”.

Uninstalling the Software

Always uninstall **Sharp Advanced Presentation Software**, when installing a new or updated version.

Before Uninstallation

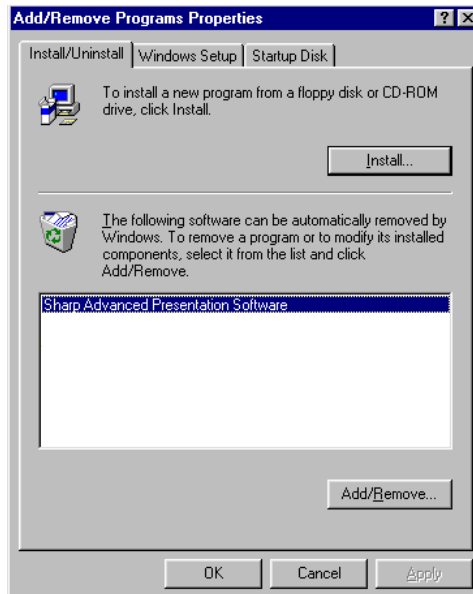
- Software uninstallation can not be done when **Sharp Advanced Presentation Software** is running.
Please make sure that the software is closed before proceeding.
- Before uninstalling **Sharp Advanced Presentation Software**, the **“Auto-Launch”** setting must be **“OFF”**.
 - 1) Double click the **“Sharp Advanced Presentation Software”** icon.
 - 2) Click the **“Option”** menu, select **“Auto-Launch ON/OFF”**.
 - 3) Select **“OFF”**.
 - 4) Close **Sharp Advanced Presentation Software**.

- 1** Click **“Start”**, and then click **“Settings”**, then select **“Control Panel”**.
- 2** Double click the **“Add/Remove Programs”** icon.



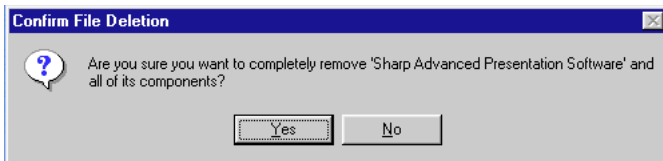
Add/Remove
Programs

- 3** Click the **“Sharp Advanced Presentation Software”**.

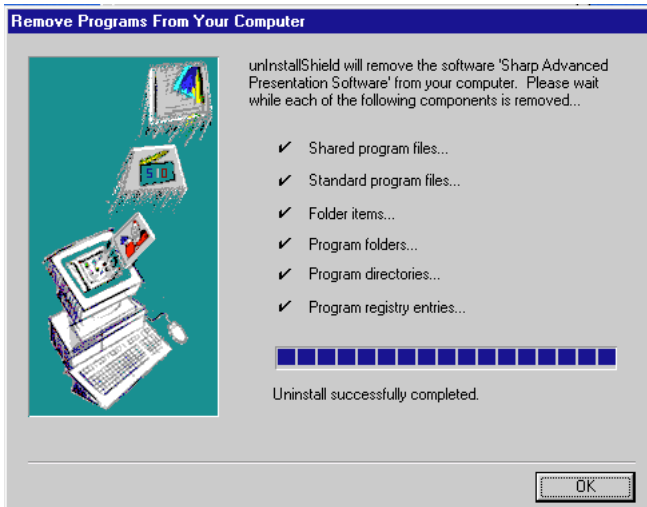


4 Click the “Add/Remove...”.

5 Click the “Yes”.



6 When uninstallation is correctly completed, “Uninstall successfully completed” message will appear. Click “OK”.



Starting and Quitting

Opening Modes

Before starting the software, make sure that the projector and the PC are correctly setup (page 6). There are three ways to start up the software.

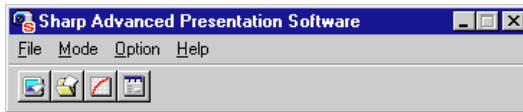
Starting from the “Sharp Advanced Presentation Software” icon in the Windows task tray



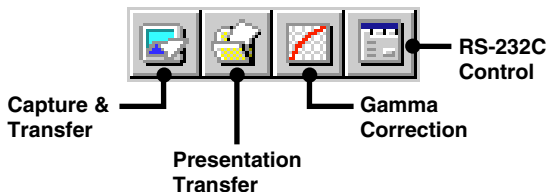
NOTE

This icon appears when “Auto-Launch ON” is selected. See page 14 for “Auto-Launch” setting.

- 1 Start up the projector.**
Make sure to turn the projector on first. The computer should always be turned on last.
- 2 Start up the PC. Click the “Sharp Advanced Presentation Software” icon in the Windows task tray.**
 - ▶ The “Sharp Advanced Presentation Software” window will open.



- 3 Select the mode you require from the “Mode” menu. Or you can use the shortcut buttons below the menu bar.**

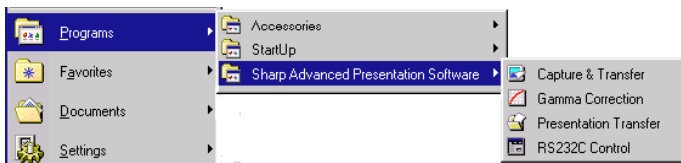


- ▶ The mode dialogue box will open.

Starting from the Windows “Start” button



- 1 Start up the projector.**
Make sure to turn the projector on first. The computer should always be turned on last.
- 2 Start up the PC. Click the “Start” button, set the pointer to “Programs” and then “Sharp Advanced Presentation Software”, and then select the mode you require.**
 - ▶ The mode dialogue box will open.



Starting from the “Sharp Advanced Presentation Software” shortcut icon on the Windows desktop

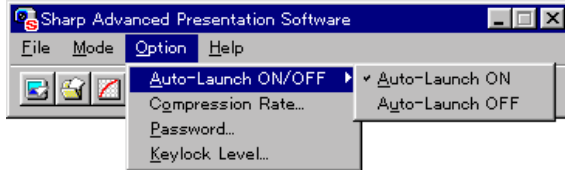


- 1 Start up the projector.**
Make sure to turn the projector on first. The computer should always be turn on last.
- 2 Double click the “Sharp Advanced Presentation Software” shortcut icon on the Windows desktop, and then select the mode you require.**
 - ▶ The mode dialogue box will open.

Changing Auto-Launch Setting

The default “**Auto-Launch**” setting is “**ON**”, which launches this software automatically when the PC starts up. You can change the setting as follows.

- 1 Click the “**Option**” menu, select “**Auto-Launch ON/OFF**”.
- 2 Select the setting as required.



When “**Auto-Launch ON**” is selected

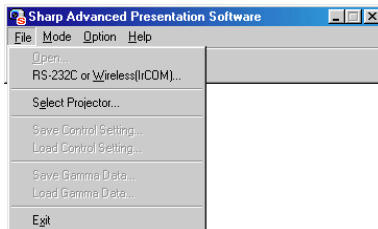
- The “**Sharp Advanced Presentation Software**” icon is resident in the Windows task tray.
- The software is automatically launched when the PC starts up.

When “**Auto-Launch OFF**” is selected

- The “**Sharp Advanced Presentation Software**” icon is removed from the Windows task tray.
- In this case the software must be started from the “**Start**” menu or the “**Sharp Advanced Presentation Software**” shortcut icon on the Windows desktop.

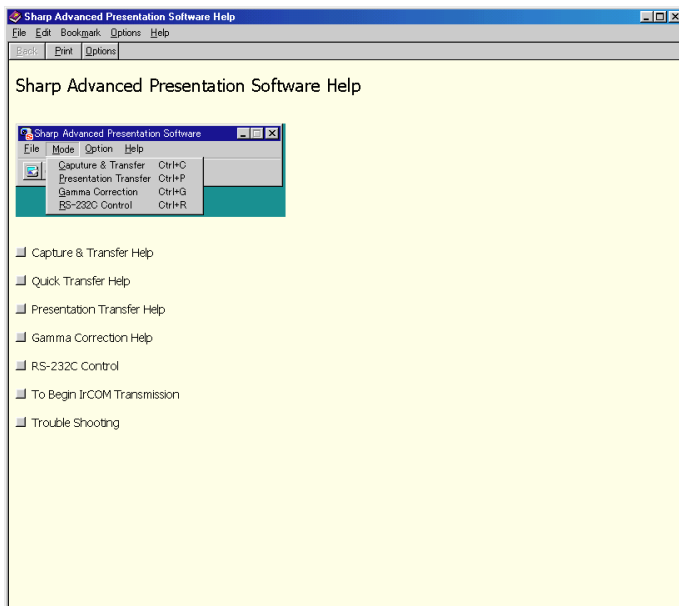
Quitting

Click the “**File**” menu, and select “**Exit**”.
Or you can use the **Alt+F4** button.

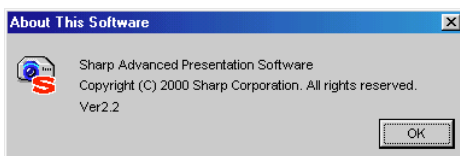


Help

To view Help, click the “**Help**” menu. When the “**Help**” window opens, click the desired item in the Help list.



To check the software version, select “**About This Software...**” from the “**Help**” menu.



Controlling the Projector's Adjustment

RS-232C Control

This function enables you to control the following projector adjustments from your PC.

Refer to the projector's operation manual for details on each adjustment.

Adjustment	Sheet	Page
Auto Sync	Set Up	18
Black Screen		
Digital Shift		
Focus		
Freeze		
Input Select		
Keystone		
Power		
PRJ Mode		
Input1/2 Gamma		
Input3 Gamma		
Zoom		
Input1 PICT/Input2 PICT	Input1 PICT/Input2 PICT	19
Input1 Resize/Input2 Resize		
Input1 Signal Type/Input2 Signal Type		
Input1 I/P Conversion/Input2 I/P Conversion		
Auto Sync Display	Fine Sync	20
Auto Sync Setup		
Input Adjust		
Settings		
Special Modes		
Input3 I/P Conversion	Input3 PICT	19
Input3 PICT		
Input3 Resize		
Audio Adjust	Audio	21
Mute		
Volume		
Auto Power Off	Options	22
Background Image		
Black Screen Display		
OSD Display		
Startup Image		
Video System		

NOTE

- Adjustments can still be made from the **RS-232C Control** utility regardless of the difference in settings in the projector's menu.
- If you move to **RS-232C Control** during **Presentation Transfer, Capture & Transfer** or **Gamma Correction, Sharp Advanced Presentation Software** automatically confirms the adjustments on the projector and shows them in the “**RS-232C Control**” window as default settings.
- Also when you change the sheet of the “**RS-232C Control**” window to proceed to the other projector adjustment, this confirmation is performed. In this case, it will repeat at regular intervals afterwards and the “**RS-232C Control**” window may show the settings on the projector.
- The Automatic Power Shutoff function will not operate when performing **RS-232C Control**, although you turn “**Auto Power Off**” ON in the “**Options**” sheet. This function operates during **Presentation Transfer, Capture & Transfer**, or **Gamma Correction**.
- To use RS-232C Control after transferring images in “**Presentation Transfer**”, “**Capture & Transfer**” or “**Quick Transfer**”, switch the input in “**Input Select**” (page 18).

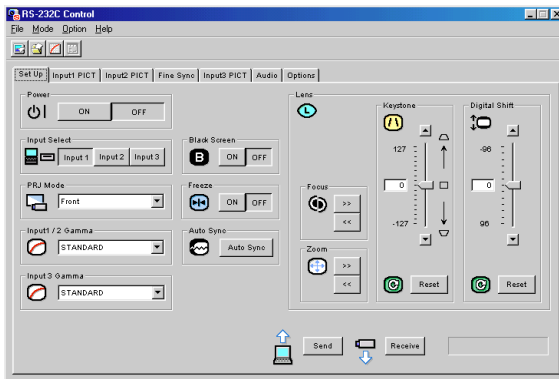
Before Adjusting

Please connect a serial (RS-232C) cable to the projector and the PC (page 6), select the correct COM Port on the PC, then proceed with **RS-232C Control**.

1 Select the “RS-232C Control” mode.

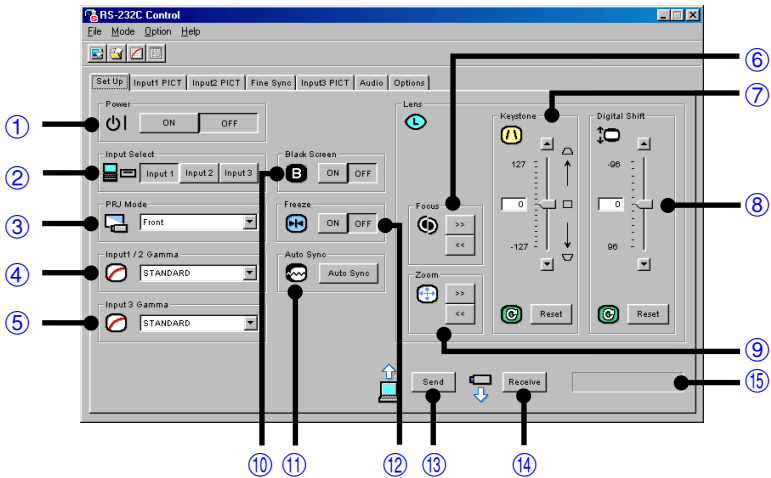
See section “Opening Modes” (page 12).

▶ The “**RS-232C Control**” window will open.



2 Click the tab of the sheet including your desired adjustment controller.

“Set Up” Adjustment



- ① Select the “Power” ON/OFF.
- ② Select the “Input Select”.
- ③ To make “PRJ Mode” select
- ④ To make “Input1/2 Gamma” select
- ⑤ To make “Input3 Gamma” select
- ⑥ To make “Focus” adjustments
- ⑦ To make “Keystone” adjustments

Slide the bar to the desired location or simply type in the desired value in the box.

- ⑧ To make “Digital Shift” adjustments
- ⑨ To make “Zoom” adjustments
- ⑩ Select the “Black Screen” ON/OFF.
- ⑪ To start “Auto Sync”
- ⑫ Select the “Freeze” ON/OFF.
- ⑬ To send all the adjustment data to the projector

Press the “Send” button to control all the adjustments on this sheet.

- ⑭ To receive data from the projector
- Press the “Receive” button to confirm the adjustments on the projector.

- ⑮ A “NOW TRANSMITTING...” message is displayed during transmission.

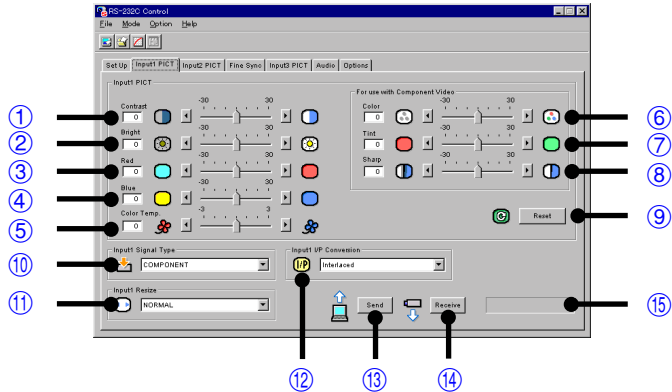
NOTE

When using the PG-C30X, since operation is manual, the “Focus” and “Zoom” adjustments cannot be performed.

“Input1 PICT”/“Input2 PICT”/“Input3 PICT” Adjustment

NOTE

- For “Input1 PICT” adjustment, “Color”, “Tint” and “Sharp” adjustments are available for component input signal only. (“Sharp” adjusts DVD 480i signal only.)
- For “Input2 PICT” adjustment, “Color”, “Tint” and “Sharp” adjustments are not available.



Adjusting and Controlling

① to ⑧: Slide the bar to the desired location or simply type in the desired value in the box.

- ① To make “**Contrast**” adjustment
- ② To make “**Bright**” adjustment
- ③ To make “**Red**” adjustment
- ④ To make “**Blue**” adjustment
- ⑤ To make “**Color Temp**” adjustment
- ⑥ To make “**Color**” adjustment
- ⑦ To make “**Tint**” adjustment
- ⑧ To make “**Sharp**” adjustment
- ⑨ To reset the adjustments ① to ⑧
Press the “**Reset**” button.
- ⑩ To make “**Signal Type**” select
- ⑪ To make “**Resize**” select
Select a size mode from the pull down menu. It will change the pixel composition to resize the picture on the screen.
- ⑫ To make “**/P Conversion**” select
- ⑬ To send all the adjustment data to the projector
Press the “**Send**” button to control all the adjustments on this sheet.
- ⑭ To receive data from the projector
Press the “**Receive**” button to confirm the adjustments on the projector.
- ⑮ A “**NOW TRANSMITTING...**” message is displayed during transmission.

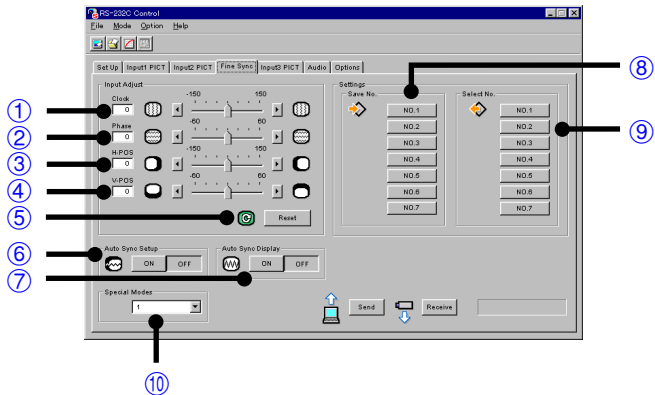
NOTE

When using the PG-C30X, the “**Sharp**” adjustment cannot be performed.

“Fine Sync” Adjustment

NOTE

“Fine Sync” adjustment is not necessary except “Auto Sync Setup” with Input2 (PanelLink Digital Input) mode.



① to ④: Slide the bar to the desired location or simply type in the desired value in the box.

- ① To make “Clock” adjustment
- ② To make “Phase” adjustment
- ③ To make “H-POS” adjustment
- ④ To make “V-POS” adjustment

⑤ To reset all the adjustments ① to ④
Press the “Reset” button.

⑥ Select the “Auto Sync Setup” ON/OFF.

“ON” is for “Auto Sync” whenever the projector is powered or the input signal is changed .

⑦ To make “Auto Sync Display” ON/OFF

“OFF” is for displaying **Background Image** during “Auto Sync”.

⑧ To store up to seven adjustment settings for use with various PCs.

Connect a PC to the projector and make the adjustments in “Input Adjust”. And then press one of the “Save No.” buttons to save the adjustment setting.

NOTE

- Make a note of the “Save No.” and its stored setting, if necessary. You cannot check each setting with this software after saving it.
- The previous setting will be overwritten if you save on the same “Save No.” button.

⑨ To select the desired adjustment setting for the currently connected PC
Press the desired “Select No.” button.

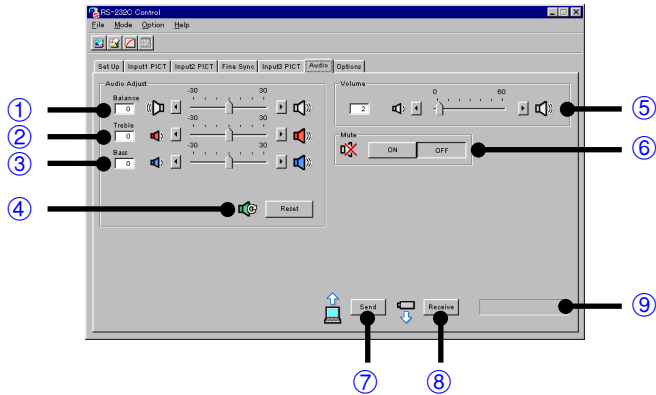
⑩ To select the “Special Modes”.

Select “Special Modes” to match the computer display mode when the correct type of input signal is not detected or when the correct mode of resolution is not selected automatically.

NOTE

When inputting DTV 480p signals, select “480p” in “Special Modes”.

“Audio” Adjustment



①, ②, ③ and ⑤: Slide the bar to the desired location or simply type in the desired value in the box.

- ① To make “**Balance**” adjustment
- ② To make “**Treble**” adjustment
- ③ To make “**Bass**” adjustment

④ To reset the adjustments ①, ② and ③
Press the “**Reset**” button.

⑤ To make “**Volume**” adjustment

⑥ Select the “**Mute**” ON/OFF.

⑦ To send all the adjustment data to the projector

Press the “**Send**” button to control all the adjustments on this sheet.

⑧ To receive data from the projector

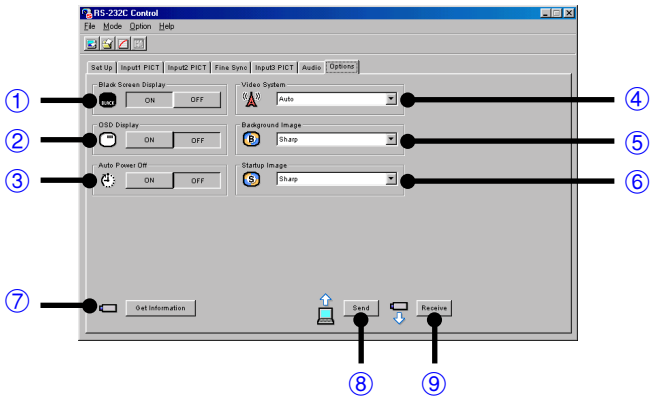
Press the “**Receive**” button to confirm the adjustments on the projector.

⑨ A “**NOW TRANSMITTING...**” message is displayed during transmission.

NOTE

When using the PG-C30X, the “**Balance**” adjustment cannot be performed.

“Options” Adjustment



① to ③: Select ON/OFF.

- ① To make “**Black Screen Display**” ON/OFF
“ON” is for displaying “BLACK SCREEN”.
- ② To make “**OSD Display**” ON/OFF
- ③ To make “**Auto Power Off**” (Automatic Power Shutoff) ON/OFF

NOTE

The Automatic Power Shutoff function will not operate when performing **RS-232C Control**, although you set it “ON”. This function operates during **Presentation Transfer, Capture & Transfer**, or **Gamma Correction**.

④ to ⑥: Select a mode from the pull down menu.

- ④ To make “**Video System**” select
- ⑤ To make “**Background Image**” select
- ⑥ To make “**Startup Image**” select

⑦ See the next page.

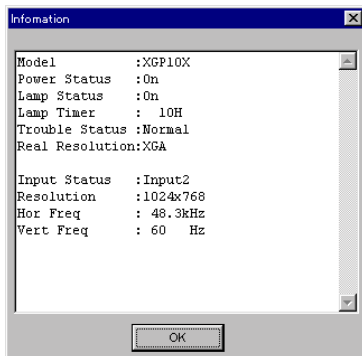
⑧ To send all the adjustment data to the projector

Press the “**Send**” button to control all the adjustments on this sheet.

⑨ To receive data from the projector

Press the “**Receive**” button to confirm the adjustments on the projector.

- ⑦ Press the **“Get Information”** (Lamp & Signal information) button to open the **“Information”** window.



“Model”

Shows the model number of the projector.

“Power Status”

On: The power is on.

Off: The power is off.

Cooling: The power is off with the cooling fan turning. Do not disconnect the power cord during “Cooling”.

“Lamp Status”

On: The lamp is on.

Off: The lamp is off.

Retry: Retrying to turn on the lamp.

Wait: The lamp is on standby.

“Lamp Timer”

Shows the accumulated lamp usage time. It will be reset when replacing the lamp.

“Trouble Status”

Temp.: The internal temperature is abnormally high. Something may block air intake.

Fan: The fan operates abnormally. Check that there is no obstacle caught in the fan.

Lamp: The lamp has a problem.

Normal: Displayed in the normal operating condition.

“Real Resolution”

Shows the resolution of the projector’s panel.

“Input Status”

Input1/Input2/Input3

“Resolution” (Displayed for Input1/2)

Shows the resolution of the image when projected on the screen.

“Hor Freq” (Displayed for Input1/2)

Shows the horizontal frequency (kHz).

“Vert Freq” (Displayed for Input1/2)

Shows the vertical frequency (Hz).

“Video System” (Displayed for Input3)

Shows the video input system (NTSC or PAL etc.). The “---” will be displayed when it is a monochrome or there is no signal. For a forced system, a “*” will lead the system name.

Save Control Settings and Load Control Settings

You can save all the current **RS-232C Control** settings of the projector in your PC (**Save Control Settings**) and also load the **RS-232C Control** values saved in the PC to the projector (**Load Control Settings**).

To make “Save Control Settings”

Click the “File” menu to select “Save Control Settings”.

All the current **RS-232C Control** settings of the projector will be saved in the SAPS folder on the PC.

To make “Load Control Settings”

Click the “File” menu to select “Load Control Settings”.

The **RS-232C Control** values will be loaded to the connected projector.

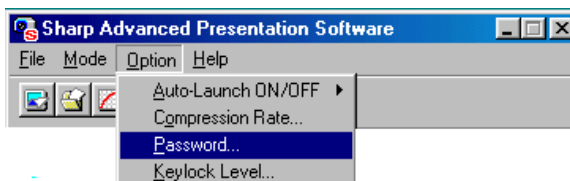
NOTE

- You cannot use this function when “XGNV1-5” is selected in “Select Projector” dialogue box.
- The projector must be identical for the “Save Control Settings” and “Load Control Settings”.

Password setting

Setting the Password

- 1 Click the “Option” menu to select the “Password” .
The “Set Projector Password” dialogue box will open.



- 2 Enter 4-digit password using keyboard into the “New Password” on the “Set Projector Password” dialogue box.



- 3 Enter 4 digit password using keyboard into the “Reconfirm” on the “Set Projector Password” dialogue box.
Check the “Save Password” check box if you want to save the password.
- 4 Click “OK” .

NOTE

After setting the password, be sure to write it down in a secure location so as not to forget it.

Changing the Password

- 1 Click the “Option” menu to select the “Password”.
- 2 Enter 4-digit old password using keyboard into the “Old Password” on the “Set Projector Password” dialogue box.



The screenshot shows a dialog box titled "Set Projector Password". It has a title bar with a close button (X). Below the title bar is a dropdown menu. The main area contains three text input fields: "Old Password" (filled with "****"), "New Password" (empty), and "Reconfirm" (empty). Below these fields is a checkbox labeled "Save Password" which is currently unchecked. At the bottom of the dialog are three buttons: "OK", "Cancel", and "Apply".

- 3 Enter 4-digit new password using keyboard into “New Password” and “Reconfirm” on the “Set Projector Password” dialogue box.
Check the “Save Password” check box if you want to save the password.



The screenshot shows the same "Set Projector Password" dialog box. In this state, the "Old Password", "New Password", and "Reconfirm" fields all contain "****". The "Save Password" checkbox is now checked. The "OK", "Cancel", and "Apply" buttons remain at the bottom.

- 4 Click “OK” .

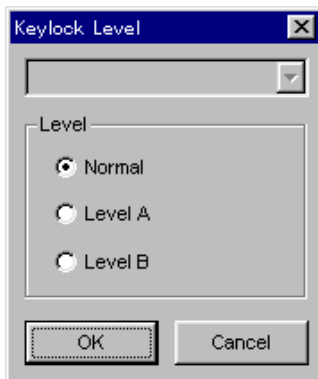
NOTE

The password setting is canceled if “OK” is clicked when nothing is input into the “New Password” and “Reconfirm” area.

Selecting the Keylock Level

This function can be used to lock the use of certain operation on the projector.

- 1 Click the “Option” menu to select the “Keylock Level”. The “Keylock Level” window will open.



- 2 Select the keylock level from “Normal”, “Level A” or “Level B”.
- 3 Click “OK” button.

An error message is displayed if the password input at the password setting differs from the password input to the main unit.

Description of Keylock Levels

Selected item	Description
Normal	All operation buttons are functional.
Level A	Only INPUT, VOLUME, MUTE, BLACK SCREEN on the projector are available.
Level B	All operation buttons on the projector are unavailable.

Adjusting Images

Gamma Correction

Changing the gamma value adjusts the tone of an image on the screen.

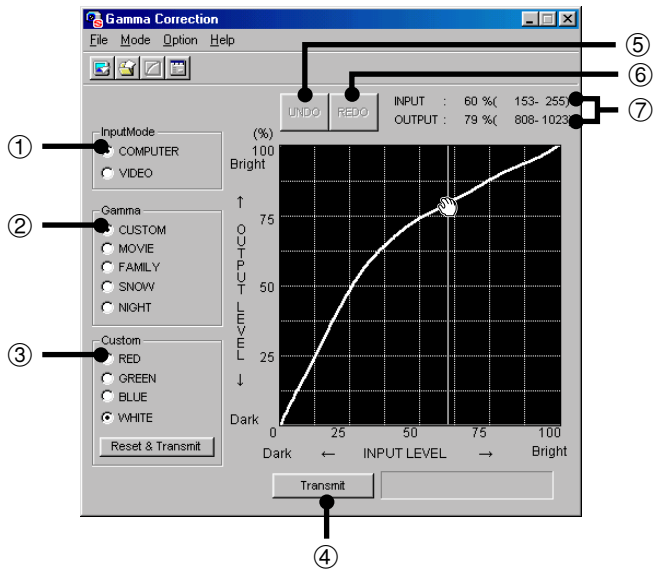
Before Adjusting

- Use the projector's Gamma button and set the CUSTOM mode.
- Please connect a RS-232C cable to the projector and the PC (page 6), then proceed to **Gamma Correction**.

1 Select the “Gamma Correction” mode.

See section “Opening Modes” (page 12).

- ▶ The “Gamma Correction” window opens.



- ① Specify the source of the image. The default setting is “COMPUTER”
- ② The default gamma value is “CUSTOM”, by which you can adjust the values of the colours in box ③.

The other modes use preset values and you cannot adjust colours independently in these modes.

“MOVIE”: Emphasizes colour saturation of the entire image.

“FAMILY”: Emphasizes colour saturation of flesh tones.

“SNOW”: Emphasizes white colour in an image.

“NIGHT”: Emphasizes dark scenes or colours in an image.

- ③ When “CUSTOM” is selected in box ②, each of these colours except “WHITE” can be adjusted respectively. As you adjust “WHITE”, the values of the other three colours will be offset.

NOTE ➤

The “Reset & Transmit” button resets the values of the colour currently selected. If you want to reset both the red and green values, click the “Reset & Transmit” button in the “RED” mode, and then click the “Reset & Transmit” button again in the “GREEN” mode. If you want to reset to the original values, click the “Reset & Transmit” button in the “WHITE” mode.

- ④ To send all the adjustment signals to the projector
- ⑤ To restore to the previous status after operating the gamma data.
- ⑥ To restore the status before the “UNDO” button was clicked.
- ⑦ Gamma coordinate display (INPUT/OUTPUT).

2 Select the “InputMode”.

3 Select “CUSTOM” or one of the other modes.

- ▶ When selecting the “MOVIE”, “FAMILY”, “SNOW”, or “NIGHT” mode, the “NOW TRANSMITTING...” message is displayed during transmission.

4 When selecting “CUSTOM”, adjust the values of each colour.

Drag and drop the curve of the graph to adjust it to the proper value.

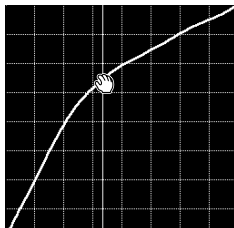
5 Click “Transmit”.

- ▶ The “NOW TRANSMITTING...” message is displayed during transmission.

Adjusting the Gamma curve

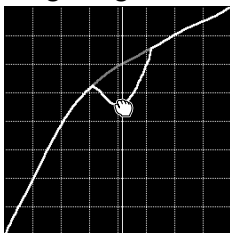
1 Repeat steps 1-4 of “Gamma Correction”.

2 Place the mouse pointer over the gamma curve.



The mouse pointer takes the shape of an open hand.

3 Drag the gamma curve.



The mouse pointer takes the shape of a closed hand and the curve changes.

The same operation is possible using the up and down arrow keys on the keyboard.

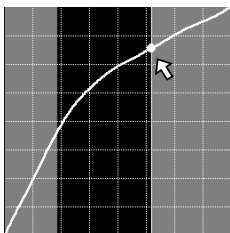
Setting the gamma correction area

You can set the gamma correction area by using Drag and Drop. The gamma curve and mouse pointer moves within the set range after setting the gamma correction area.

The gamma correction area can also be set by using the right and left arrow keys on the keyboard while pressing the shift key.

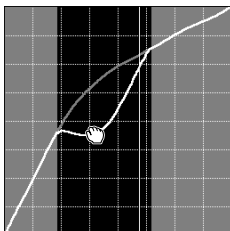
1 Drag the mouse pointer, then drop it.

The point at which the mouse pointer is released is set as the correction area.



2 Drag and drop the gamma curve.

Gamma curve or mouse pointer moves within the set range.



NOTE

- To restore to the previous status after operating the gamma data, click the “UNDO” button.
- To restore to the status before the “UNDO” button was clicked, click the “REDO” button.

Saving the Gamma Correction Settings

- 1 Select “File”, then select “Save GAMMA Data”.**
 - ▶ This opens the “Save As” dialogue box.
- 2 Specify a “File name”.**
- 3 Specify a “Save In” location.**
- 4 Click “Save”.**

The current gamma correction settings of the projector will be saved.

Loading the Gamma Correction Settings

- 1 Select “File”, then select “Load GAMMA Data”.**
 - ▶ This opens the “Open” dialogue box.
- 2 Specify a file location in “Look in”.**
- 3 Specify a “File name”.**
- 4 Specify a “Files of type”.**
- 5 Click “Open”.**

The gamma correction values will be loaded to the connected projector.

Setup for Transferring Images

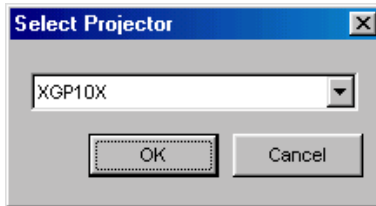
Selecting the Projector

Specify the projector model to which you will transfer images.

1 Click the “File” menu to select “Select Projector...”.

▶ The “**Select Projector**” dialogue box will open.

Select “XGP10X” if you are using the XG-P10X, “PGC30X” if you are using the PG-C30X.



2 Select the projector model for use and click “OK”.

NOTE ▶

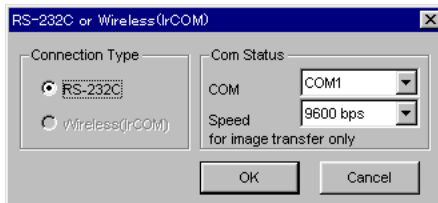
For other models, select a projector from the screen.

Changing Connection Type

This menu is used to change the connection type. The port setting must be made depending on which type you are going to use, infrared communications or communications using RS-232C cable. The default setting is “RS-232C”. **Gamma Correction** and **RS-232C Control** require communications using RS-232C cable.

1 Click the “File” menu to select “RS-232C or Wireless (IrCOM)...”.

▶ The “**RS-232C or Wireless (IrCOM)**” dialogue box will open.



NOTE ▶

“**Transmission Speed**” is changeable only for image transfer via RS-232C.

2 Select “Com Status” according to your computer.

3 Select the connection type and click “OK”.

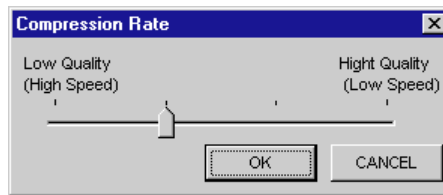
Changing Compression Rate

When transferring a BMP image file by **Presentation Transfer** or **Capture & Transfer**, you can change compression rates.

Compression rate

- Compression rate applies to BMP files only. This software does not recompress JPEG files.
- The default setting for image quality is “middle”.
- If you are transmitting the custom Image (BMP) used as **Startup Image** and **Background Image**, the image is automatically transmitted as “High quality, slow transmission” for best results. The BMP file will be transferred without any conversion to minimize the loss of image quality.
- If adjusted, the compression rate will be saved in each image folder as a file. And the converted files remain in the folder so that the conversion time can be shortened thereafter.

1 Click the “Option” menu, select “Compression Rate...”.



**Faster transmission
but poorer image
quality**



**Better image quality
but slower transmission**

2 Drag and drop the pointer to the rate position you desire.

3 Click “OK”.

- ▶ The compression rate in the selected folder will be changed.

Saving a Custom Image as Startup Image and Background Image

The projector has an option to display a custom image (e.g. your company logo) upon startup of the projector (**Startup Image**) or when there is no signal (**Background Image**).

You can choose your custom image from the projector's mode menu. Refer to the projector's operation manual for how to set **Startup Image** and **Background Image**.

The following is the procedure for saving the custom image on the projector.

NOTE

- The startup image and background image are limited as follows:
 1. 1024 × 768 or lower sized
 2. If the pallet uses over 240 colours with 256 colour BMP files, the image is automatically converted within the projector's number of colour limits.
 3. 24-bit colour BMP files are converted into 256 colours.
- Selecting and leading the custom image file as **Startup Image** and **Background Image** can be done by **Presentation Transfer** or **Capture & Transfer**.

Select “**Custom Image Transfer**” in “**Transfer Mode**” of the “**Presentation Transfer**” window or of the “**Capture & Transfer**” window.

Refer to “Transferring Images” (page 35) for how to transfer the image.

NOTE

The “**Custom Image Transfer**” mode saves one image file only and overwrites the previously transferred image if you send another image file.

To avoid erasing the custom image, you should change the transfer mode to “**Image Transfer**” after sending the custom image.

Presentation Transfer


This mode makes it possible to transfer images saved as BMP or JPEG files to the projector. A preview of the slides in the file folder selected is displayed on the PC monitor.

Before Presentation

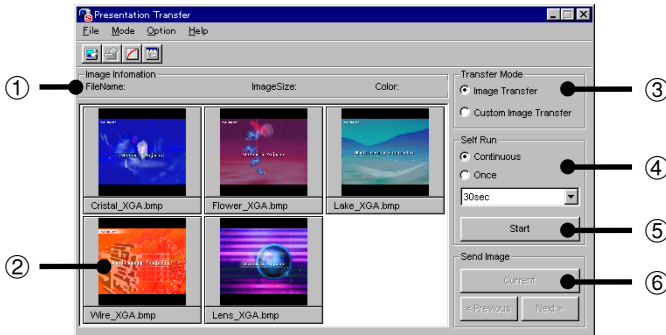
- RS-232C cable (cross type) is required for connecting the projector with PC.
- Specify the projector model to which you will transfer images (page 32).
- Save the slides as BMP or JPEG files. The image size must be 1024 × 768 or lower.
- Number of colours 16 bits or 24 bits for image transfer, 256 colours only for startup transfer.

NOTE

If you are using Microsoft **PowerPoint** or similar presentation software, ensure the slide or page size is 1024 × 768 or lower. If the saved JPEG slide size is too big, **Sharp Advanced Presentation Software** will prompt you to reduce the slide size. You can lower the slide size in the “**File**” menu, “**Page Setup**” or “**Slide Setup**” before converting to JPEG. (For more details, refer to your presentation software’s operation manual.)

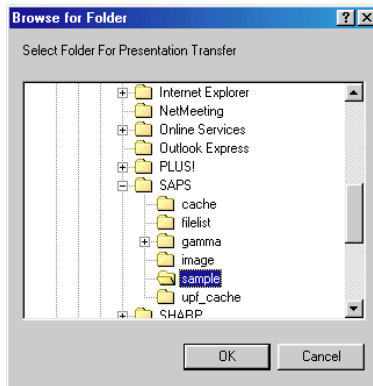
- 1) Open the desired presentation file.
 - 2) Select “**File**”, then “**Page Setup**” or “**Slide Setup**”.
 - 3) Change the page width and height to a smaller size.
 - 4) Click “**OK**” for the new settings and save the slides in BMP or JPEG format again.
- For Microsoft **PowerPoint** users:
 - 1) Open the desired PowerPoint presentation.
 - 2) Select “**File**”, then select “**Save As**”.
 - ▶ This opens the “**Save As**” dialogue box.
 - 3) Click “” in “**Save as type**”.
 - 4) Select “**JPEG**”.
 - 5) Specify a “**File name**” for the JPEG Images of your presentation.
 - 6) Specify a “**Save In**” location.
 - 7) Click “**Save**”.
 - 8) A “**PowerPoint**” dialogue box appears. To convert the entire presentation as JPEG images, click “**Yes**”. To convert only the current slide, click “**No**”.

- 1 Select the “Presentation Transfer” mode.**
See section “Opening Modes” (page 12).
▶ The “Presentation Transfer” window will open.



- ① Information of the selected image
- ② Images in the selected folder (step 3)
- ③ Selecting the type of “**Transfer Mode**” (step 4)
- ④ Selecting the Presentation Method
- ⑤ Starts the “**Self Run**” transfer.
- ⑥ “**Send Image**” Transfer (page 37)

- 2 Click the “File” menu, and select “Open...”.**
▶ The “Browse for Folder” window will open.



- 3 Select the folder in which the image files (Presentation Slides) are saved. And click “OK”.**
▶ The images in the selected folder are previewed in the “Presentation Transfer” window.

NOTE ▶

If the size of image does not fill the box (800 × 500), the image will be displayed with black space. However, the software will transfer the image at the original resolution.

4 Select “Image Transfer” in “Transfer Mode”.

NOTE

For details of the “Custom Image Transfer”, see page 34.

5 On the projector side, the screen is automatically set to the CUSTOM mode.

To restore to the previous screen, (INPUT 1, 2, 3) press input selector key INPUT/Select button.

To send a single image (“Send Image”)

1 Select an image in the “Presentation Transfer” window to transfer.

If you want to change the compression rate, see the section “Changing Compression Rate” (page 33).

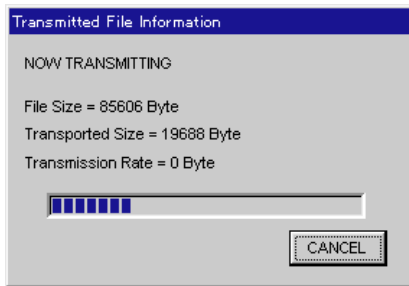
NOTE

- The compression rate is applied to all the images in the selected folder.
- Changing the compression rate will change the image picture quality and transfer speed.



2 Click the “Current” button in the “Send Image” box.

- ▶ The “**Transmitted File Information**” dialogue box appears and the transfer begins. If you want to stop the transfer, click “**CANCEL**”.



- ▶ To send the next image, click the “**Next>**” button in the “**Send Image**” box.
- ▶ To send the previous image, click the “**<Previous**” button in the “**Send Image**” box.
- ▶ The default order of images follows the file name. You can change the order of the image files by dragging and dropping them to the desired location.

To send all the images (“Self Run”)

1 Select the desired method in “Self Run”.

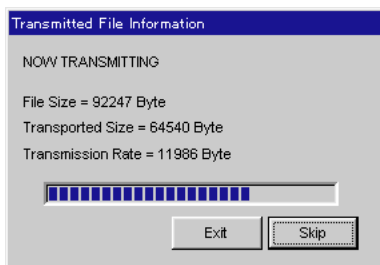
- “**Continuous**” sends all images in the specified folder endlessly.
- “**Once**” sends all images in the specified folder once.

2 Select the interval to send images in “Self Run”.

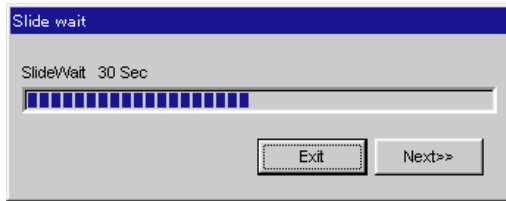
- You can select it in the range from 30 seconds to 5 minutes fixed in units of 15 seconds.

3 After step 4 on the previous page, press the “Start” button in the “Self Run” box of the “Presentation Transfer” window.

- ▶ The “**Transmitted File Information**” dialogue box will appear and the transfer will begin. If you want to stop the transfer, click “**Skip**”.



- ▶ After the transfer is completed, the “**Slide wait**” dialogue box will appear until the image will be projected on the screen. If you want to cancel the interval and soon show the next image, click “**Next>>**”.



- ▶ To cancel **Self Run**, click “**Exit**”.

Capture & Transfer

This mode allows you to transfer an image of what is currently displayed on the PC monitor.

Before Presentation

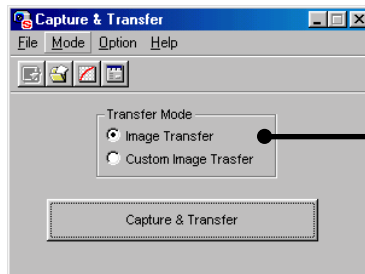
- Connect a projector with PC by using RS-232C cable ([page 6](#)).
 - Specify the projector model to which you will transfer images ([page 32](#)).
 - This function is not available for full screen slides (e.g. the “**Slide Show**” mode of Microsoft **PowerPoint**).
- For full screen slides to use **Capture & Transfer**, see the section “Quick Transfer” ([page 40](#)).

1 Display the image you want to transfer.

2 Select the “Capture & Transfer” mode.

See section “Opening Modes” ([page 12](#)).

- ▶ The “**Capture & Transfer**” window will open.



Displays the type of “**Transfer Mode**” (step 3)

3 Select “Image Transfer” in “Transfer Mode”.

If you want to change the compression rate, see the section “Changing Compression Rate” (page 33).

NOTE

- For the details of the “**Custom Image Transfer**”, see page 34.
- Changing the compression rate will change the image picture quality and transfer speed.

On the projector side, the screen is automatically set to the CUSTOM mode.

4 Click the “Capture & Transfer” button in the “Capture & Transfer” window.

- ▶ The “**Capture & Transfer**” window disappears and capturing begins.
- ▶ After capturing is completed, the “**Capture & Transfer**” window reappears and transfer of the captured image begins.
- ▶ The “**Transmitted File Information**” dialogue box appears. If you want to stop the transfer, click “**CANCEL**”.

To send another image

Change the displayed image on the PC monitor and then repeat step 4.

Quick Transfer

Applying the preset compression rate, this mode allows you to transfer images by simple steps.

NOTE

This mode transfers images under the following settings which cannot be modified.

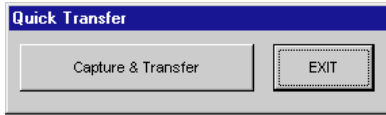
- Normal picture quality
- Compression rate: Middle

The custom image used as **Startup Image** and **Background Image** cannot be transferred in this mode.

Before Presentation

- Confirm that the “**Auto-Launch**” setting is “**ON**” (page 14) and that the software is active.
- Connect a projector with the PC by using RS-232C cable.
- Specify the projector model to which you will transfer images (page 32).
- This function is available for full screen slides (e.g. the “**Slide Show**” mode of Microsoft **PowerPoint**).

- 1 Display the image you want to transfer.**
- 2 Keep the right mouse button depressed for 2 seconds.**
The position of the pointer can be anywhere on the display.
 - ▶ The **“Quick Transfer”** window opens.



On the projector side, the screen is automatically set to the CUSTOM mode.

- 3 Click the “Capture & Transfer” button in the “Quick Transfer” window.**
 - ▶ The capturing begins.
 - ▶ The **“Transmitted File Information”** dialogue box appears and the transfer of the captured image begins.
If you want to stop the transfer, click **“CANCEL”**.
 - ▶ After the transfer is completed, the **“Transmitted File Information”** dialogue box disappears.
- 4 Click “EXIT” in the “Quick Transfer” window.**

To send another image

Change the displayed image on the PC monitor and repeat from step 2.

Troubleshooting

Unable to transfer images or an error occurs with communication

- ◀ Check that the connection type is surely selected as you intend (page 32).
- ◀ Check that the image size is 1024 × 768 or lower.
- ◀ Check that the port for the RS-232C serial cable is correctly specified in the PC's settings (page 32).
- ◀ Check that the cable is correctly and securely connected (page 6).

The functions in this software are not operating properly

- ◀ Reconnect the RS-232C serial cable and try again.
The cable may not be connected properly or an error may have occurred during the transmission.
- ◀ Check that the port for serial (RS-232C) communications is correctly specified in the PC's settings (page 32).
- ◀ Projector may not be receiving command because of the projector's setting. Please check the projector's "ON/OFF" status, "INPUT SELECT" status (**COMPUTER**, **VIDEO**) or the input signal. Resend the command after adjusting these items.
- ◀ Before **Gamma Correction**, use the projector's Gamma button and set the CUSTOM mode.

The transmitting speed is low

- ◀ Check the compression rate setting (page 33).
- ◀ Check the transmission speed, in the case of RS-232C cable communications (page 32).
- ◀ Note that custom image as **Startup Image** and **Background Image** is fixed in the "High quality, slow transmission" setting.
- ◀ Note that **Quick Transfer** is fixed in the "Normal quality, middle speed" setting.

Unable to save the startup image

- ◀ Do not turn off the projector while transmission.
The image data may be lost.

Quality of the image is low

- ◀ Check the compression rate setting ([page 33](#)).
- ◀ Note that **Quick Transfer** is fixed in the “Normal quality, middle speed” setting.

Unable to speed up the transfer or improve the image quality

- ◀ If the image file is saved in JPEG format, its compression rate cannot be changed.
Note that the compression rate only applies to BMP file format.

Unable to speed up “Gamma Correction” though the transmitting speed was changed

- ◀ The transmitting speed setting applies to image transfer via cable only. The speed for transfer of gamma values is fixed at 9,600 bps.

Glossary

Word	Explanation	Page
About This Software	Version information	15
Auto-Launch ON/OFF	Specify if this software launches automatically upon startup	14
Background Image	Image displayed when no signal is input. With the XG-P10X and PG-C30X, same as startup image.	34
BMP	Image file format	1
Capture & Transfer	Transfer an image of what is currently displayed on a monitor	39
Compression Rate	Rate of compression of the images transmitted from a PC to the projector	33
Custom Image	General term for background image and startup image	34
Custom Image Transfer	Transfer the custom image to the projector. (Unless the custom image is transferred again (overwritten), the screen is retained in the projector's memory.)	34
Drag & Drop	Select an item and modify it using the mouse	30
Exit	Exit from this software	14
File	Main menu item	14
Gamma	Projector's specific values of specified colours	28
Gamma Correction	Adjust the projector's gamma values from a PC	28
Help	Help in using this software	15
JPEG	Image file format	1
Keylock Level	Set whether to enable or disable operating buttons on projector	27
Load Control Settings	Load all the saved "RS-232C Control" values to the projector	24
Mode	Main menu item	12
Open	Open file folder containing images to be transmitted to the projector (for Presentation Transfer)	36
Option	Main menu item	14
Password	When a password is set, some functions can only be changed by the person with the password.	25
Presentation Transfer	Transfer a series of images (BMP or JPEG) to the projector	35
Quick Transfer	Shortcut to transferring an image of what is currently displayed on a monitor	40
RS-232C	Communication method of the projector to a PC (Serial Port)	1
RS-232C Control	Adjust the projector's settings from a PC	16

Word	Explanation	Page
RS-232C or Wireless (IrCOM)	Select method of communicating with the projector	32
Save Control Settings	Save all the current “RS-232C Control” settings of the projector in a PC	24
Self Run	Send slides in a specified folder one after another to the projector	38
Startup Image	Image displayed when projector turned on. With the XG-P10X and PG-C30X, same as background image.	34
Transfer Mode	Change the function from “Custom Image Transfer” and/or “Image Transfer”	34
Transmission Speed	Transmission speed via the projector’s RS-232C port and PC’s serial port	32

Services

Please contact nearest Sharp dealer if there are any problems.

For user purchased the projector in following countries, you can contact to the addresses shown if you have problems.

USA	Sharp Electronics Corporation 1-800-BE-SHARP (1-800-237-4277) lcdsupport@sharplcd.com http://www.sharp-usa.com/
Canada	Sharp Electronics of Canada Ltd. Sharp Customer Care Center (905) 568-7140 (Local) or 877-742-7722(toll free) http://www.sharp.ca
Mexico	Sharp Electronics Corporation Mexico Branch Servicio al cliente llame: SHARP GENIAL Respuestas inmediatas (525) 716-9000
Germany	Sharp Electronics (Europe) GMBH 01805-234675 http://www.sharp.de
U.K.	Sharp Electronics (U.K.) Ltd. 0161-205-2333
Australia	Sharp Corporation of Australia Pty.Ltd. 02-9830-4600 02-9672-1216 (Fax) http://www.sharp.net.au
Hong Kong	Sharp-Roxy (Hong Kong) Ltd. 2822-9303 2528-4879 (Fax)
Singapore	Sharp-Roxy Sales (Singapore) Pte., Ltd. 65-4294342 http://www.sharp.com.sg kwee@global.sharp.co.jp
U.A.E.	Sharp Middle East Fze 971-4-81-5311 helpdesk@smef.global.sharp.co.jp
Thailand	Sharp Thebnakorn Co., Ltd. 02-236-0170 02-236-9188 (Fax) http://www.sharp-th.com
Korea	Sharp Electronics Incorporated of Korea (82) 2-3660-2002 (82) 2-3660-2029 (Fax) http://www.sharp-korea.co.kr webmaster@sharp-korea.co.kr

Information

You can see information about **Sharp Advanced Presentation Software** on the following home page.

<http://www.sharp-world.com/projector>

SHARP CORPORATION